



For Official Use Only

# JOINT REVIEW MISSION

MID DAY MEAL SCHEME

PUDUCHERRY

*Fifth Joint Review Mission  
04 - 11 December 2013*

## **ACKNOWLEDGEMENT**

The Joint Review Mission Team for the Fifth Review Mission – Puducherry 2013-14 would like to thank the Government of Puducherry for the support rendered in facilitating the Team to undertake the review successfully.

The members of the Mission acknowledge and value the support and hospitality extended by the Secretary, Department of School Education, Director, Department of School Education, District Collector of Karaikal; Managing Director, PAPSCO, Chief Executive Officers of Pondicherry and Karaikal; all officials of the Department of School Education, Teachers, SMC members, Cook-cum-helpers working in the MDM kitchens and most importantly the students of the visited schools.

The team has made an earnest effort to include in the report the wide range of observations and discussions held at various levels with key officials and other stakeholders. The Mission sincerely hopes that the recommendations emerging through this multi-pronged exercise would help the Government of Puducherry in strengthening the implementation of the MidDay Meal Programme in schools and ensure that every school going child avails its right to nutritious food.

**Date: 11.12.2013**

**Place: Pondicherry.**

**List of abbreviations:**

| <b>Abbreviations</b> |  |
|----------------------|--|
| BMI                  | Body Mass Index  |
| CEO                  | Chief Education Officer  |
| CCH                  | Cook cum helpers   |
| DAT                  | Directorate of Accounts and Treasury                           |
| DIS                  | District Inspector of Schools                                  |
| DFS                  | Double Fortified Salt  |
| DSE                  | Directorate of School Education                                |
| FCI                  | Food Corporation of India                                      |
| GoI                  | Government of India  |
| GPS                  | Global Positioning System                                      |
| JRM                  | Joint Review Mission   |
| MME                  | Management, Monitoring and Evaluation                          |
| MHRD                 | Ministry of Human Resource Development                         |
| MDM                  | Mid Day Meal   |
| MI                   | Monitoring Institutes  |
| NCLP                 | National Child Labour Programme                                |
| NP-NSPE              | National Programme of Nutritional Support to Primary Education |
| NSG-MDM, Ed.CIL      | National support Group-Mid Day Meal                            |
| PAB                  | Programme Approval Board                                       |
| PAPSCO               | Pondicherry State Civil Supplies Corporation                   |
| SHP                  | School Health Programme  |
| RTE                  | Right to Education Act   |
| SMC                  | School Management Committee                                    |
| SSA                  | Sarva Shiksha Abhiyan  |
| TA                   | Transportation Assistance                                      |
| ToR                  | Terms of Reference   |
| UT                   | Union Territory  |

## 1. Executive Summary

### 1.1 Background

Malnutrition is an area of growing concern among growing children. Nutritional deficiencies and their incidences among children of school-going age group cannot be neglected. Malnutrition not only gives rise to morbidity and mortality, but also prevents a child from developing into a fully functional adult. It adversely affects education in the following ways:

- A malnourished child is less likely to attend school regularly.
- A malnourished child attending school is likely to find it difficult to concentrate and effectively participate in teaching-learning activities. Such children generally tend to drop out.
- The academic achievement levels of malnourished children tend to be low.

Article 47 of the Indian Constitution (in the Directive Principles of State Policy) explicitly states that “The State shall regard the raising of the level of nutrition and the standard of living of its people and the improvement of public health as among its primary duties...”. Article 39 (f) of the Indian Constitution also directs the States to ensure that “children are given opportunities and facilities to develop in a healthy manner and in conditions of freedom and dignity”. Article 21 of the Constitution implicitly provides “right to life” to every Indian citizen.

In keeping with these constitutional provisions, the National Programme of Nutritional Support to Primary Education (NP-NSPE) was launched as a Centrally Sponsored Scheme on 15th August 1995, in 2,408 blocks in the country as a dry ration scheme, to enhance enrolment, retention and attendance and simultaneously improve nutritional levels among children. The scheme was revised in its content and coverage from time to time. The hot cooked mid day meal is being served to the children of elementary classes from 2004. The scheme saw a significant development during 11<sup>th</sup> Plan and many studies reported that this scheme had a positive impact on various educational parameters and had helped a lot in achieving the goals of SSA in universalizing the elementary education in the country. The provision of payment of honorarium to cook-cum-helpers has opened the path for the disadvantage sections of the society to get employment in the scheme with dignity and pride to prepare the meal and serve to the children.

The MDM was extended to cover all children of upper primary classes from 2008-09. The scheme was further revised in April 2008 to extend the scheme to recognized as well as unrecognized Madarasas / Maqtabs supported under Sarva Shiksha Abhiyan (SSA) as Government aided centres. The scheme was further revised during 2009-10 to enable the States / UTs to provide nutritious and calorific meal to the children of elementary classes. It was further extended to cover children under National Child Labour Projects (NCLP) w.e.f. 1.4.2010.

Realizing the importance of MDMS, Right to Education Act, 2009 has made it mandatory for every school to have all weather building including kitchen-cum-store. The rules under the RTE Act, 2009 mandate that School Management Committee to be responsible for monitoring the implementation of the scheme.

The MDM scheme has played a very important role in enhancing the enrolment and reducing the drop out in elementary schools. During the 11<sup>th</sup> plan the scheme had been stabilized and supply bottlenecks had been removed. The independent monitoring institutes reported that MDM had positive impact on attendance and retention of the children in the school. The Office of Supreme Court Commissioner also reported that the MDM is the most widely accepted scheme and had a positive impact in improvement of educational indicators. Many studies have reported that MDM had helped in bringing girl child into the school and bridging the gender gap.

National Programme of Nutritional Support to Primary Education (commonly known as the Mid-Day Meal Scheme) was launched as a Centrally-Sponsored Scheme on 15th August, 1995. It's objective was to boost universalization of primary education' by increasing enrolment, retention and attendance and simultaneously impacting on nutrition of students in primary classes.

Programme of providing MDM in Schools is designed to help universalisation of Elementary Education in the following ways:

- i) By improving enrolment and regularity of attendance.
- ii) By reducing drop-out and
- iii) By improving children's level of learning and self-esteem.

Puducherry is one of the few States/UT which had been implementing a mid day meal scheme for the benefit of the school going students even before the implementation of MDMS by Central Government. The Mid Day Meal Programme is being implemented for the students from I to VIII Std. availing financial assistance under the Flagship Programme of MDMS, whereas the Puducherry Government has been implementing the MDMS to cover the Pre Primary and the students studying upto to XII Std.

To implement the MDMS the Directorate of School Education, Govt. of Puducherry has issued detailed guidelines vide order No.6566/Edn/D.E/P.A/2002-03(annexure no. 8) for the officials who are in charge of the Centralised kitchens and the Head of the Institutions at the level of distribution. Adequate care has been taken to ensure that neither mal-nutrition nor the spoilage of food happens in the course of distribution of the meals.

### ***Background of JRM***

Government of India constituted Review Missions (RM) in 2009 to review the implementation of the scheme as per the defined Terms of Reference (ToR) in various States across the country. The objectives of the Review Mission are as under:-

1. Review the system of fund flow from the state Level to school/cooking agency level and the time taken in this process.
2. Review the management and monitoring system and its performance from state to school level.
3. Review the progress of the programme with respect to availability of food grains and funds at school/cooking agency level, quality and regularity in serving the meal in the selected schools and districts, transparency in implementation, role of teachers, involvement of community, convergence with school health programme for supplementation of micro nutrients and health check-ups, etc.
4. Assess the satisfaction of the children, parents and teachers about the implementation and impact of the scheme.
5. Review the maintenance of records at school/cooking agency level.
6. Review the availability of infrastructure, its adequacy and source of funding.
7. Suggestions for the implementation of the programme.

**Brief on previous JRM:** In Puducherry, Joint Review Mission was reviewing the implementation of MDM for first time.

***Findings of Monitoring Institution (4th half yearly (October 2010 – March 2011) - districts covered Pondicherry, Karaikal, Mahe and Yanam***

- 1) Display board of weekly menu of the meals were found in the 10 % of central and school kitchen notice board

**Findings of Monitoring Institution (4th half yearly 4th half yearly (April –September 2012)**

- 2) No display board of weekly menu of the meals were found in the centralised kitchen notice board
- 3) Micro nutrients were supplied to needy children only
- 4) Water tanks are not being inspected regularly.

**1.2 Performance of the State in Mid Day Meal (during last 3 financial years) and key achievements:**

**Coverage-Number of Institution wise:**

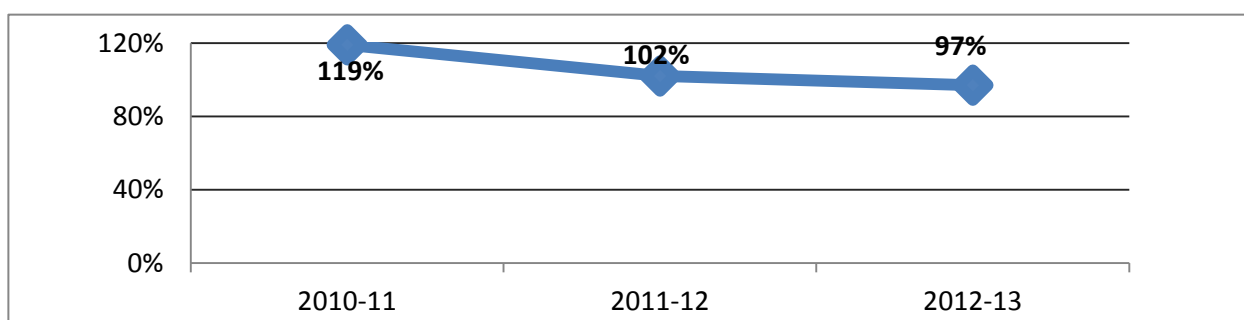
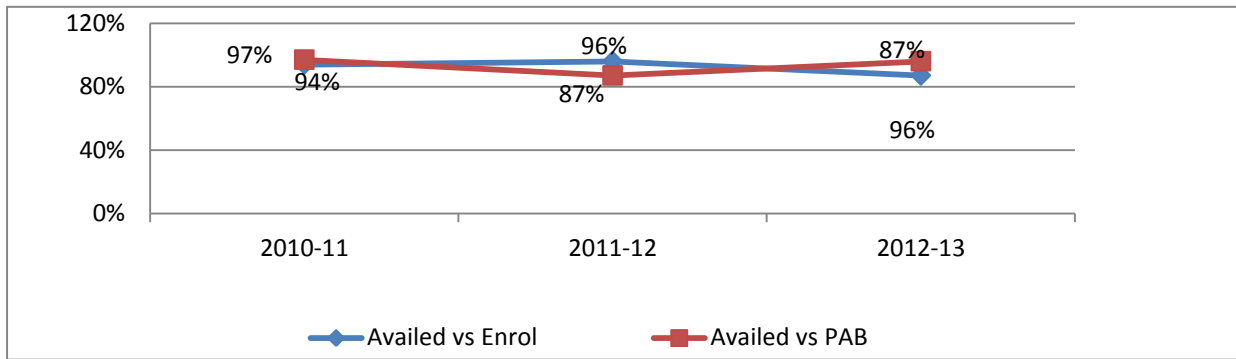


Figure 1

**Coverage-Number of beneficiary/enrolment and PAB :Primary:**



**Upper Primary**

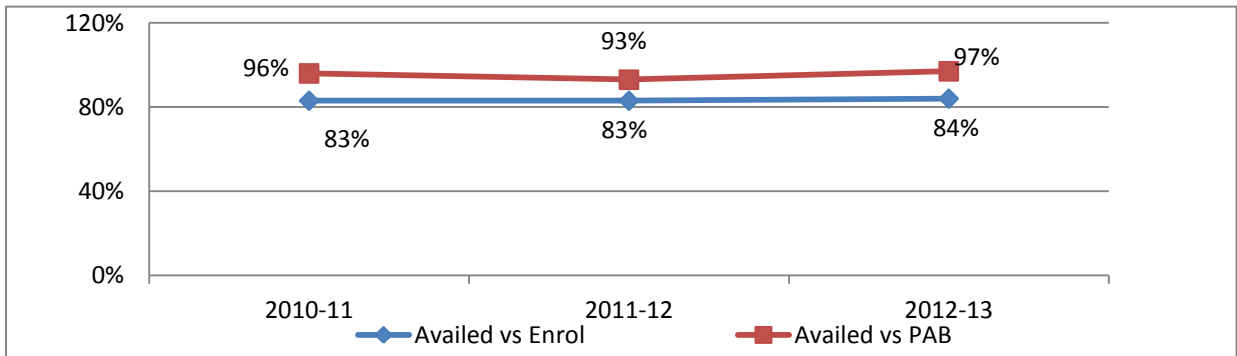


Figure 2

**Coverage-Mid day meal days/PAB wise :**

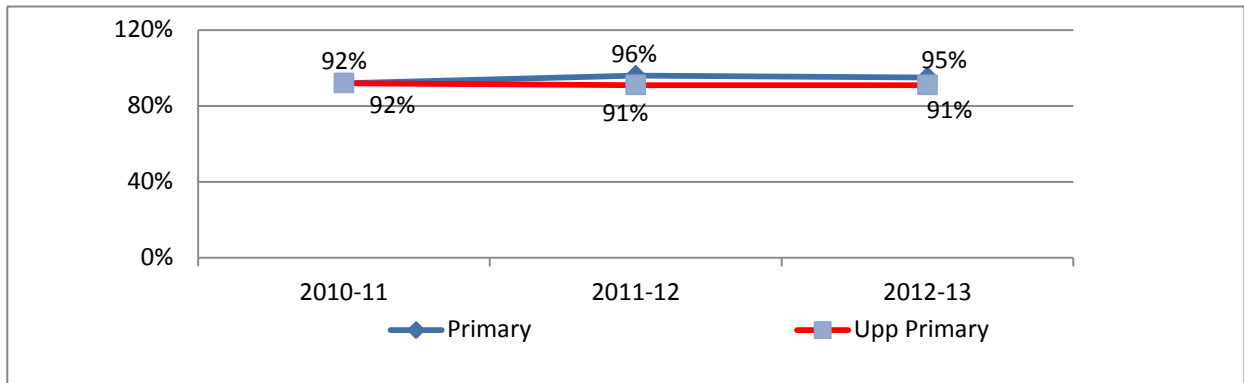


Figure 3

**Food grain Utilisation :**

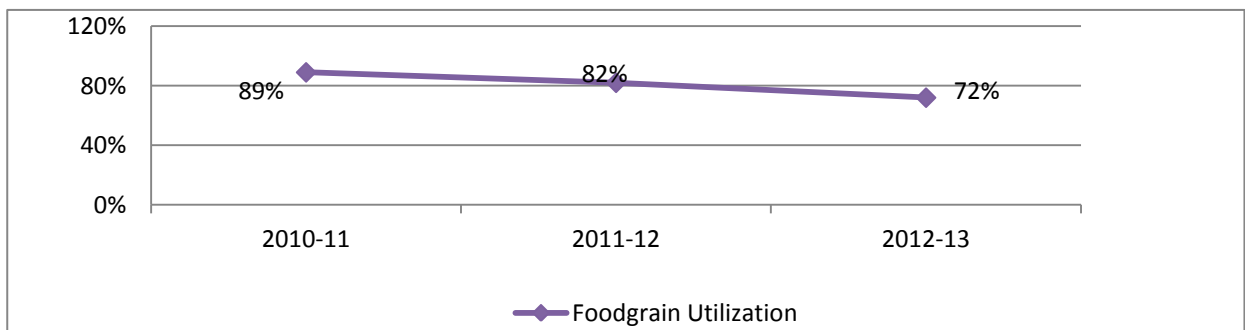


Figure 4

**Cooking cost Utilisation :**

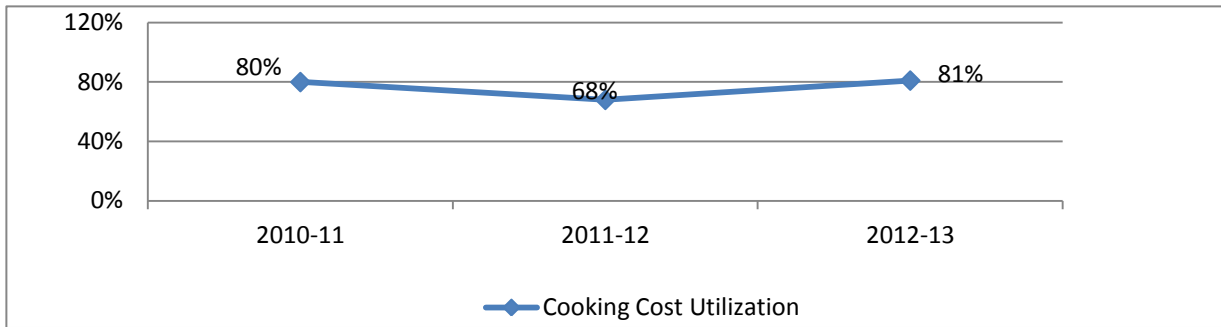


Figure 5

**MME fund Utilisation :-**

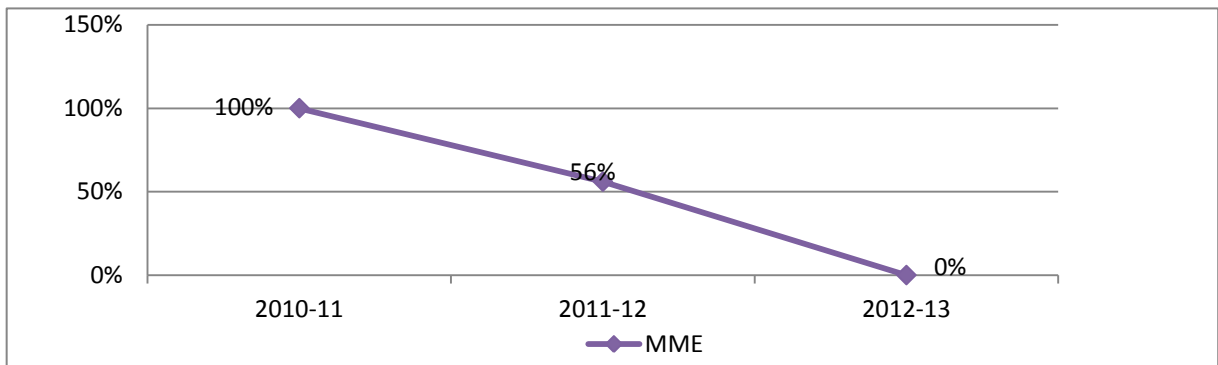


Figure 6

**TA fund Utilisation:**

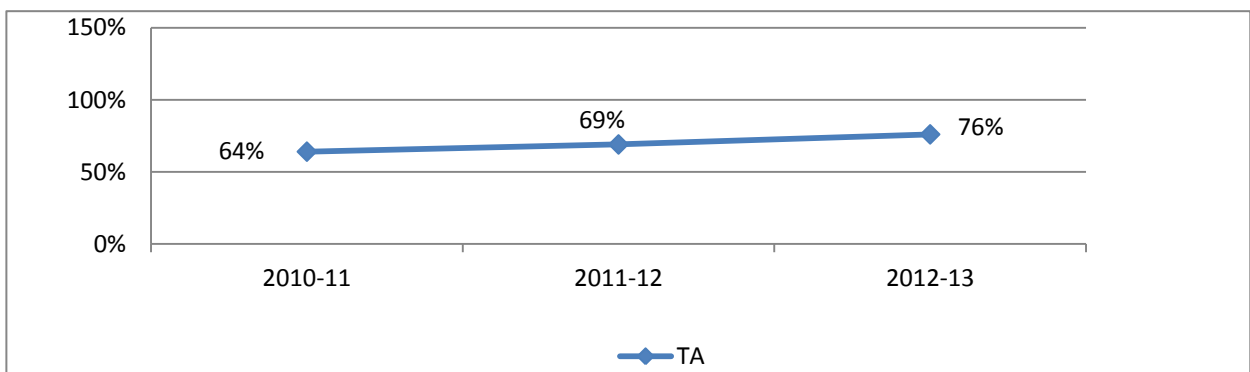


Figure 7



### Cook cum helper honorarium Utilisation

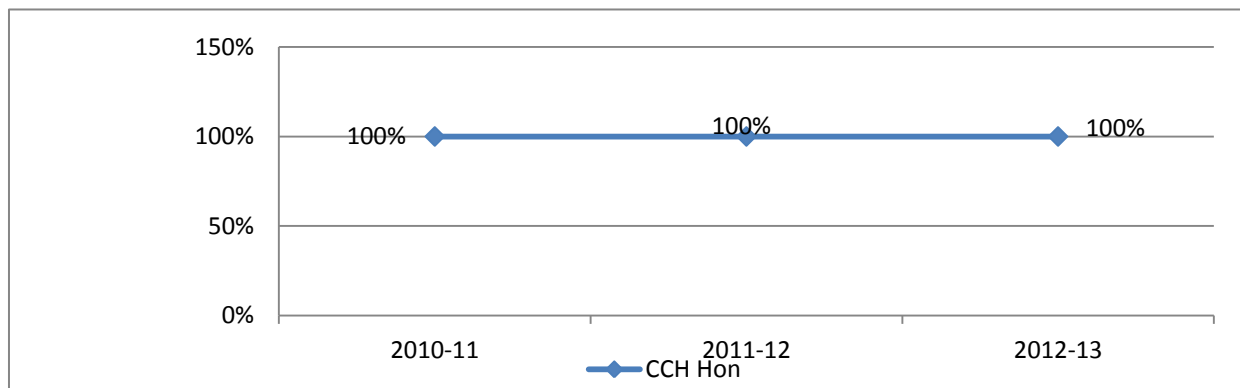


Figure 8

### 1.3 Key Issues identified during JRM

JRM observed following areas of concern which require immediate attention of the State Government:

- i) There is no dedicated management structure of MDM from state up to school level.
- ii) Tasting of food in the school and the centralized kitchen is not recorded.
- iii) Lack of awareness of the MDMS- non display of logo, food norms and
- iv) Entitlement of the children in the centralized kitchens as well as in schools was not displayed
- v) Inadequate community participation.
- vi) Teachers have been made in charge of the centralized kitchens and school based canteens thereby hampering teaching learning activities.
- vii) The items centrally procured from agencies do not bear 'Agmark' or ISI standards.
- viii) DFS salt not provided
- ix) No health check-up of the CCH in centralized and school based kitchens.
- x) No dedicated MIS structure and data entered in the web portal is upto September 2013.
- xi) No separate record maintenance for MDMS.
- xii) The carry vans should be covered and food containers should be tightly closed and secured.
- xiii) No emergency plan
- xiv) No district vigilance committee constituted
- xv) Inadequate eating plates in the school.
- xvi) School based kitchens are fire wood based.
- xvii) No inspection of schools for review of MDMS.
- xviii) Nil MME utilization
- xix) Only one meeting of SSMC has been held so far.

xx) Absence of grievance redressal mechanism.

**Best Practices of the Puducherry**

- The State Government contribution towards the implementation of MDMS much higher than the mandatory 25%
- The State Government also implementing a Breakfast scheme from its own funds.
- Mechanised Centralised Kitchens operated by Government
- Buffer stock available in the kitchens.
- Proper storage of items.
- Gunny bags auctioned by the Government of Puducherry.



**Figure -9**  
**Installation of RO system for safe drinking water**



**Figure -10**

**Multi tap water system**

- Installation of RO system in all the schools for safe drinking water and Multi tap water system for hand washing.
- Good sanitation facilities.
- Good convergence with NRHM
- Uniformity of quality of MDM in all the schools
- Inclusion of more vegetables in the MDM improve micro nutrient availability and are very much beneficial for the children
- Uniform quality of food ingredients supplied through PAPSCO
- Maintenance of health records of children help to know the health status
- Provision of adequate quantity of MDM with good quality

## 1.4 Major Recommendations

- Financial management - The financial powers should be delegated to the officers responsible for implementation of MDMS.
- Dedicated management structure for MDM at all levels.
- Maintenance of separate records for MDM.
- Tasting food by teachers
- Rationalization of CCH as per the norms and provision of health check ups for CCH.
- Creation of awareness about MDM scheme.
- Usage of Agmark certified ingredients.
- State Review Mission to be constituted.
- Testing of food samples by NABL accredited laboratories.
- Convening of district Monitoring Committee under the chairmanship of Member of Parliament.
- Emergency Medical Plan.
- Grievance Redressal Mechanism.
- Data feeding in MDM - Management Information System.
- Technological intervention like solar powered cooking option in Centralised kitchens.

## 2. Joint Review Mission

### 2.1 JRM Context

Nutrition and health are the pre-requisites for human resource development. Our planners have been aware of these vital inputs and enshrined it in article 47 of the constitution. "The State shall regard raising the level of nutrition and standard of living of its people and improvement in public health among its primary duties."

Malnutrition in children is the consequence of a range of factors that are often related to poor food quality, insufficient food intake, and severe and repeated infectious diseases, or frequently a combinations of the three. These conditions, in turn, are closely linked to the overall standard of living and whether a population can meet its basic needs, such as access to food, housing and health care. Nutrition is directly linked to human resource development, productivity and ultimately to the nation's growth. Malnutrition on the other hand is a complex phenomenon. It is both the cause and effect of poverty and ill health: and follows a cyclical, inter-generational pattern.

It is inextricably linked with illiteracy, especially female illiteracy, lack of safe drinking water, sanitation, ignorance, lack of awareness and ill health. It creates its own cycle within the large cycle of poverty. Malnutrition adversely affects UEE. Even if a malnourished child does attend school, he/she finds it difficult to concentrate on and participate in the learning activities in school. Unable to cope, the child would very often drop out of school. Various studies suggest that absence of an adequate breakfast over extended period can affect both behavior and nutritional status; such children exhibit irritability, decreased attentiveness and low concentration span, all of which affect their active learning capacity. Malnutrition is

therefore not just an issue for the nutritionist; the planners and economists also need to recognize that the cost of malnutrition is much greater than the investments required to end hunger/malnutrition.

A programme of the scale and magnitude of MDM requires close monitoring and evaluation at all levels. In 2009, the Ministry of Human Resource Development, Govt. of India, decided to review implementation of the programme in all its aspects through the Review Missions, comprising of experts from various areas and representatives of MHRD and State Governments. The Review Mission visits schools in 2 districts in the chosen State/UT and present their report to State and Central government.

### **2.1.2 Terms of Reference of the JRM**

The Terms of Reference (ToR) of the Joint Review Mission are as under:-

- i) Review the system of fund flow from State Government to schools/cooking agency and the time taken in this process.
- ii) Review the management and monitoring of the scheme from state to school level.
- iii) Review the implementation of the scheme with reference to availability of food grains, quality of MDM, regularity in serving MDM as per approved norms and mode of cooking.
- iv) Role of Teachers,
- v) Convergence with School Health Programme (SHP) now known as Rashtriya Bal Swasthaya Karyakarm (RBSK) for supplementation of micronutrients and health checkups and supply of spectacles to children suffering from refractive errors.
- vi) Creation of capital assets through kitchen-cum-store/kitchen devices
- vii) Appointment of Cook-cum-Helpers for preparation and serving of meal to the children
- viii) Availability of dedicated staff for MDM at various levels
- ix) Review the maintenance of records at the level of school/cooking agency.
- x) Review the availability of infrastructure, its adequacy and source of funding.
- xi) Review of payment of cost of food grains to FCI by the districts
- xii) Review the involvement of NGOs/Trust/Centralized kitchens by States/UTs Government in implementation of the scheme.
- xiii) Management Information System (MIS) from school to block, district and State level to collect the information and disseminate it to other stakeholders
- xiv) Assess the involvement of community' in implementation of MDM scheme and give suggestions for improvement in the implementation of the programme.
- xv) Review of the status of tasting of the meal by at least one teacher.
- xvi) Review of status of safe storage and proper supply of ingredients to schools.

- xvii) Review of the status of awareness about MDM scheme.
- xviii) Review of status of convening of District Monitoring Committee under the chairmanship of the Member of Parliament.
- xix) Review of the convening of regular review meetings at district level.
- xx) Review of the status of testing of food samples by NABL accredited laboratories.
- xxi) Review of the status of Emergency Medical Plan; and.
- xxii) Suggestions for improvement in the implementation of the programme.

**ToRs for the Assessment of Nutritional Status of children:**

- i) To assess the anthropometric measurements of a sample of children availing MDM: height, weight, mid arm circumference.
- ii) To calculate the Body Mass Index (BMI) on the basis of measurement of height and weight.
- iii) To identify the children who are undernourished and over nourished.
- iv) To assess the nutritive value of the served MDM on the day of visit by 24 hour food recall method.
- v) To review the quality and quantity of the served MDM.
- vi) To review the satisfaction of the children parents and community on the served meal under MDM in respect of quality and quantity.
- vii) To suggest some nutritionally balance region specific recipes.
- viii) To assess the ways for better convergence with the School Health Programme.

**2.2. Composition of JRM**

1. Dr U.K Lakshmi, ,Team Leader Prof & Head, Department of Food Science and Nutrition, Avinashilingam Institute for Home Science and Higher Education for Women Coimbatore.
2. \*Dr.Suparna S. Pachouri, Director, MHRD, GOI
3. Shri.E. Vallavan,,Member, Director, Education/ representative of UT Administration of Puducherry – Member
4. Dr. M. Amirthaveni, Member , Professor, Department of Food Science and Nutrition, Avinashilingam Institute for Home Science and Higher Education for Women Coimbatore.
5. Shri Sanjay Singh, Member , OSD, Mid- day Meal, Government of Bihar - Member
6. Dr. Mridula Sircar,Consultant, NSG-MDM, Ed.CIL.
7. Ms.Tulika Tiwari, Consultant, NSG-MDM, Ed.CIL.

\*Joined the JRM from 10<sup>th</sup> to 11<sup>th</sup> December 13

**Co-Team Members**

8. Ms. M. Ramya Siva Selvi Research Assistant
9. Ms. E. Kalai Selvi, Research Assistant
10. Ms. R. Usha Rani, Research Assistant
11. L. Manju Devi, Research Assistant

**2.3 Methodology**

**2.3.1 Planning & preparation for the JRM**

JRM team was briefed about the implementation of the MDM scheme in the Union Territory of Puducherry by Department of School Education. A detailed schedule of activities for the JRM was planned and prepared for the field visits and meetings with the officials at different levels. The team was sub divided in two teams for larger coverage of schools and children. The team visited 27 schools and 3 centralised kitchens in district Pondicherry and 6 Schools and 2 centralised kitchens in district Karaikal.

**2.3.2 Visit schedule**

Date wise schedule of the JRM Team during visit to the State

| <b>Date</b> | <b>Activities</b>   |
|-------------|---|
| 3.12.13     | Departure for Puducherry  |
| 4.12.13     | Field visit in Puducherry   |
| 5.12.13     | Meeting with the state officials and field visit in Puducherry                        |
| 6.12.13     | Field Visit in Puducherry, Visit to PAPSCO office and departure for Karikal           |
| 7.12.13     | Field visit in Karikal  |
| 8.12.13     | Report writing in Karikal and return to Poducherry                                    |
| 9.12.13     | Report writing in Puducherry  |
| 10.12.13    | Report writing in Puducherry and visit to rice lifting and distribution agency office |
| 11.12.13    | Report presentation to the Government of Puducherry                                   |

**2.3.3 Methodology followed for the study**

**i. Selection of the districts**

Two districts of Puducherry namely Pondicherry and Karaikal, were selected for the visit of JRM. District Pondicherry was selected by the Govt. of India on the basis of performance of the scheme during the last year and the second district i.e. Karaikal was selected by the State Govt.

ii. Sampling Design

The JRM followed a multistage sampling design to capture the intricacies involved in the implementation of the programme. From each of the 2 districts that is Pondicherry and Karaikal districts schools were selected randomly. The schools were selected purposively so as to cover the schools where MDM is served through centralized kitchen and as well as those schools where MDM is served by the school canteen centres.

The JRM team members divided themselves into two teams to cover more number of schools and children. The schools to be visited and routes were planned in consultation with State and district administration taking into consideration urban, rural areas covering Government and Aided schools. The JRM team also visited centralised kitchens located in urban and rural areas, PAPSCO (Puducherry Agro Products, Food Civil Supplies Corporation) and Food Corporation of India godowns/offices.

A sample of 771 children, (441girls and 330 boys) were selected for the study. Instead of selecting a large sample, the review mission emphasized for a greater in depth study to see the details in their entirety-

iii. Selection of schools

The team visited a total of 33 schools comprising of 27 schools in Puducherry and 6 schools in Karaikal.

iv. Meetings/ Discussions with different stakeholders:

Record based enquiry methodology and interviews with stake holders were undertaken to collect information on the performance of the scheme in the state. In-depth discussions were held with the state, district, block and school level functionaries to get information about the modalities being followed for implementation of the scheme in Puducherry and Karaikal.

v. Information was collected from schools (Primary Data) and the review of documents was done.

vi. The JRM team carried out a critical review of the documents related to MDMS that had been provided by the State as well as the schools.

### **3. Mid Day Meal in Puducherry**

#### **3.1 Historical Perspectives of MDM implementation in the Puducherry**

In Puducherry the system of providing mid day meals to school children existed even during the French regime but on a small scale. Canteens were then functioning in the following schools 1) Ecole de Filles, Rue Dumas, 2) Ecole de la Rue Surcouf and 3) Ecole de filles de Rue des Missions. The expenditure on the scheme was met by a committee of donors called 'Comite de Bienfaisance'.

In the year 1938, French government provided regular provisions in the budget towards the expenditure of the school canteens. Since then canteens were started in government schools. After merger of Pondicherry with the Indian Union, efforts were taken to provide mid day meals to poor children in all government schools.

Till 1977, canteens in 226 schools became functional to cover 41,254 children of class 1 to 5 in all government schools. Pondicherry - 142, Mahe-6, Karaikal- 67, Yanam- 11.

The criteria for opening a canteen in schools was

- a) The school enrolment should be more than 50 children.
- b) The school should have more than one teacher.
- c) Pucca building should be available in the schools.

Rice was supplied on controlled rate from civil supplies department. Groceries were purchased through tenders directly for Pondicherry, Karaikal and Mahe. Yanam was supplied cooked meals on contract basis through tender process.

Menu for three days was wheat and CSM sambhar, Upumma, pongal, vadai, bajji etc and two days rice with sambar and vegetable porials.

Puducherry is one of the few States/UT which has been implementing a mid day meal scheme for the benefit of the school going students even before the implementation of MDM scheme by the Central Government.

The MDM is being implemented for the students from I to VIII Std. availing financial assistance under the flagship Programme of MDM scheme.

The objective of the MDM scheme is to enhance the enrolment rate, to arrest the dropout and to enhance the nutritional status of the students. As per the norms fixed by the Ministry of Human Resource Development, 100 gms of rice for the primary student and 150 gms of rice per student per day for upper primary student is to be provided. In addition to the GOI norms the State is giving additional rice amounting to 30gm for primary and 10 gm for the upper primary students. The cost of this additional rice is being borne by the State. This is being done to enhance the nutritious and calorie intake. Under the scheme 72,943 Number of students are covered from I to VIII Std.



**Expenditure on meal component wise per child per day/year**

(₹. in Lakhs)

| NAME OF THE DIET ARTICLES            | PRIMARY     |                | UPPER PRIMARY |                |
|--------------------------------------|-------------|----------------|---------------|----------------|
|                                      | Per Day     | Academic Year  | Per Day       | Academic Year  |
| Food grains (Rice)                   | 0.65        | 136.05         | 0.23          | 77.58          |
| Pulses                               | 1.55        | 325.50         | 1.55          | 325.50         |
| Vegetables                           | 1.55        | 325.50         | 1.55          | 325.50         |
| Oil & fat                            | 0.37        | 77.07          | 0.37          | 77.07          |
| Salt & Condiments                    | 1.18        | 247.08         | 1.18          | 247.08         |
| Fuel                                 | 0.93        | 195.03         | 0.93          | 195.03         |
| Any other item<br>( Labour and TPTN) | 0.85        | 178.05         | 0.85          | 178.05         |
| <b>TOTAL</b>                         | <b>7.08</b> | <b>1484.28</b> | <b>6.66</b>   | <b>1425.81</b> |

**Figure 11**

To implement the MDM the Directorate of School Education, Govt. of Puducherry has issued detailed guidelines for the officials who are in charge of the centralised kitchens and the Head of the institutions at the level of distribution. Adequate care has been taken to ensure that neither mal-nutrition nor the spoilage of food happens in the course of distribution of the MDM.

**State Profile:**

- Area : 479 sq.km
- No. of Districts : 04
- Population : 12,44,464
- Literacy Rate : 86.55%
- Children Population in 6 to 14 years : 1.76lakh
- Total Govt. Schools: 452
- Total Schools : 721
- Total Students at Elementary Level :-1,75,290

SOURCE : Census 2011, [www.py.gov.in](http://www.py.gov.in)

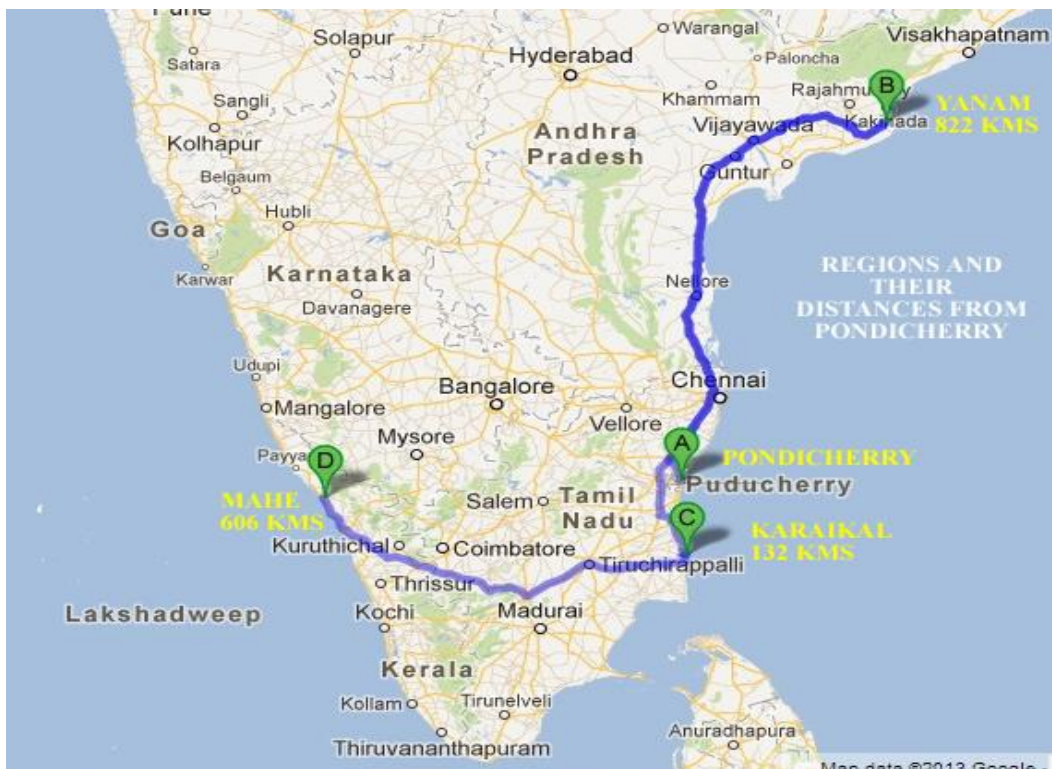


Figure 12 (Map of UT of Puducherry)

The total no of institutions in UT of Puducherry category wise is as follows

| SL.No | TYPES OF SCHOOLS  | No. OF SCHOOLS CATEGORY WISE |       | TOTAL |
|-------|---|------------------------------|-------|-------|
|       |   | GOVT.                        | AIDED |       |
| 1.    | Primary   | 248                          | 2     | 250   |
| 2.    | Upper Primary with Primary (Middle)                                     | 89                           | 26    | 115   |
| 3.    | Upper Primary without Primary (High Schools & Higher Secondary Schools) | 87                           | 0     | 87    |
| Total |   | 424                          | 28    | 452   |

Figure 13

“Puducherry” is the French interpretation of the original name “Puducheri” meaning “new settlement”.

Excavations at Arikamedu, about 7 kms to the south of the town, show that Romans came here to trade in the 1st Century AD. At the beginning of the fourth century A. D. when the Puducherry area is part of the Pallava Kingdom of Kanchipuram. The Cholas of Tanjavur to Pandya Kingdom in the thirteenth century. to the Vijayanagar Empire took control of almost all the south of India and lasted till 1638, when the Sultan of Bijapur began to rule over Gingee.

The Portuguese established a factory in Puducherry at the beginning of the sixteenth century, After that the Danes shortly set up an establishment, and likewise the Dutch. The French period of Puducherry began in 1674. The Dutch captured Puducherry in 1693 but returned it to France in 1699. Only after 1816 the French regained permanent control of Puducherry, it lasted till 1954 when the French handed Puducherry over to an independent India.

On November 1, 1954, the French possessions in India were de facto transferred to the Indian Union and Puducherry became a Union Territory. In the year 1963, the Parliament enacted the Government of Union Territories Act which provides for Legislative Assemblies and Council of Ministers in the Union Territories. In exercise of the powers conferred by Article 239 of the Constitution of India and Section 46 of the Government of Union Territories Act 1963, the President of India has framed the Business of the Government of Puducherry (Allocation) Rules, 1963 and the Centre is represented by the Lt. Governor.

Puducherry culture is very rich and diverse. It is a place where the cultural impacts of several traditions have merged to form a cultural in itself. Puducherry people, culture, festivals reflect the social structure of the Union territory. The culture of Puducherry has imbibed various fairs and festivals.

The Union Territory of Puducherry has a richly cosmopolitan culture. Puducherry people speak French and English, along with Tamil, Telugu and Malayalam. The music and dance forms of Puducherry are immensely influenced by the rich heritage of the Tamil tradition.

The architecture here is highly influenced by the culture of the place. An interesting fact about Puducherry is that the city is divided into two quarters 1. French and 2. Tamil.

Puducherry has a population that is a harmonious mix of different religions.

The Union Territory of Puducherry comprises of two distinct districts of Puducherry and Karaikal. Puducherry districts comprises of Puducherry region and two outlying Administrative units of Mahe and Yanam.

## District Profile (Separate for 2 districts)

### Puducherry District

The Union Territory of Puducherry comprises of four regions namely Puducherry, Karaikal, Mahe and Yanam, which are not geographically contiguous. Puducherry is located in the East Coast, about 162 kms. south of Chennai. This is the largest among the four regions and consists of 12 scattered areas interspersed with enclaves of Villupuram and Cuddalore Districts of Tamil Nadu. The Union Territory (UT) of Puducherry shares a state border and cultural and linguistic similarities with Tamil Nadu. Gingee and Pennaiyar are the major rivers in the Puducherry region. The geographical location of Pondicherry is between 11°56' North Latitude 79°50' East Longitude.

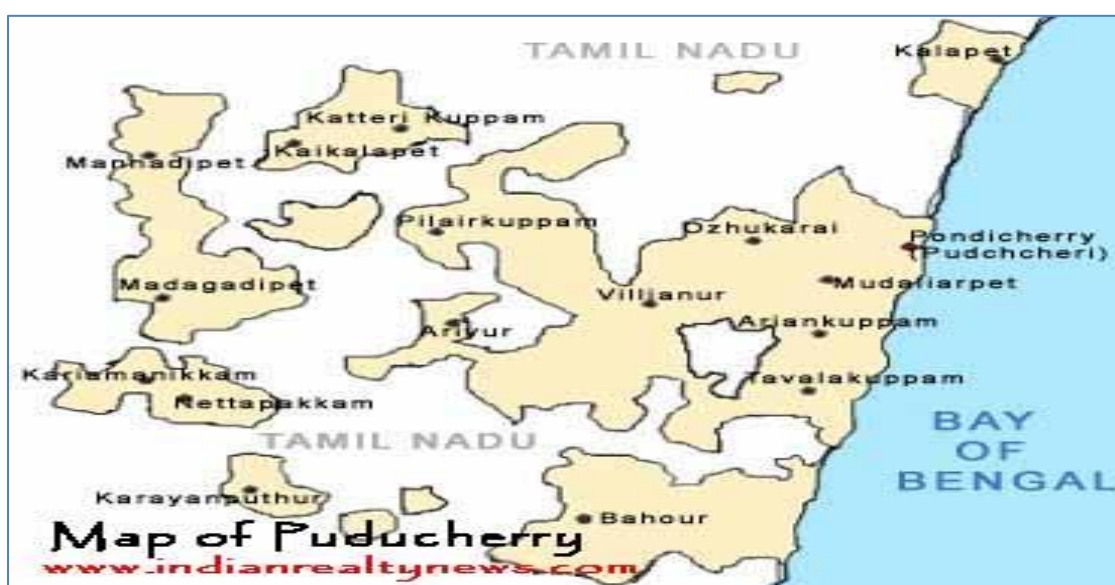


Figure 14

### District Profile

|  |                               |
|--|-------------------------------|
| <b>Population of the District (2011 Census)-</b> | 9,47 lakhs                    |
| <b>Area</b>                                      | - 293 Sq.Kms.                 |
| <b>Literacy Rate</b>                             | - 86.13%                      |
| <b>Sex Ratio</b>                                 | - 1031 Females per 1000 Males |
| <b>Density</b>                                   | - 3,231 Persons per sq. km    |

SOURCE : Census 2011, [www.py.gov.in](http://www.py.gov.in)

**No. of Institutions**

| Sl/No.       | Stage         | Govt. + L.B | Govt. Aided | EGS / AIE | Total      |
|--------------|---------------|-------------|-------------|-----------|------------|
| 1            | Primary       | 160         | 1           | 0         | 161        |
| 2            | Upper Primary | 119         | 20          | 0         | 139        |
| <b>Total</b> |               | <b>279</b>  | <b>21</b>   | <b>0</b>  | <b>300</b> |

Figure 15

**Enrolment & No. of Beneficiaries under MDM Scheme in PS and UPS during 2010-11, 2011-12 & 2012-13 of Poncherry District**

| Year    | No. of Children Enrolled |       |       | No. of children opted for MDM (No. of Beneficiaries) |       |       |
|---------|--------------------------|-------|-------|--|-------|-------|
|         | PS                       | UPS   | Total | PS   | UPS   | Total |
| 2010-11 | 36914                    | 32734 | 69640 | 34674  | 29066 | 63740 |
| 2011-12 | 31827                    | 30403 | 62230 | 28580  | 29318 | 57898 |
| 2012-13 | 24790                    | 24820 | 49610 | 24660  | 24796 | 49456 |

Figure 16

**Target for implementation of MDM in 2013-14**

|   |  |     |
|---|--|-----|
| 1 | Numbers of Block to be covered                         |     |
| 2 | Numbers of schools proposed to be covered (Primary)    | 161 |
| 3 | Numbers of schools proposed to be covered (Upper Pry.) | 139 |
| 4 | Total Numbers of schools proposed (Pry. + Upper Pry.)  | 300 |

Figure 17

**Karaikal District**

The Union Territory of Pondicherry constituted out of the four erstwhile French establishments of Pondicherry, Karaikal, Mahe and Yanam. Karaikal district is embedded in the Nagappattinam and Tiruvarur district of Tamil Nadu State. District lies between 10° 49' and 11° 01' northern latitude about 150 kms and lies between 79° 43' and 79°52' eastern longitude about 150 kms. Karaikal town is located about 16 km north of Nagappattinam and 9 km south of Tarangambadi is the regional headquarters. Karaikal district is made up of the communes of Karaikal, Kottuchcheri, Nedungadu, Tirunallar, Niravi and Tirumalarajanpattinam.

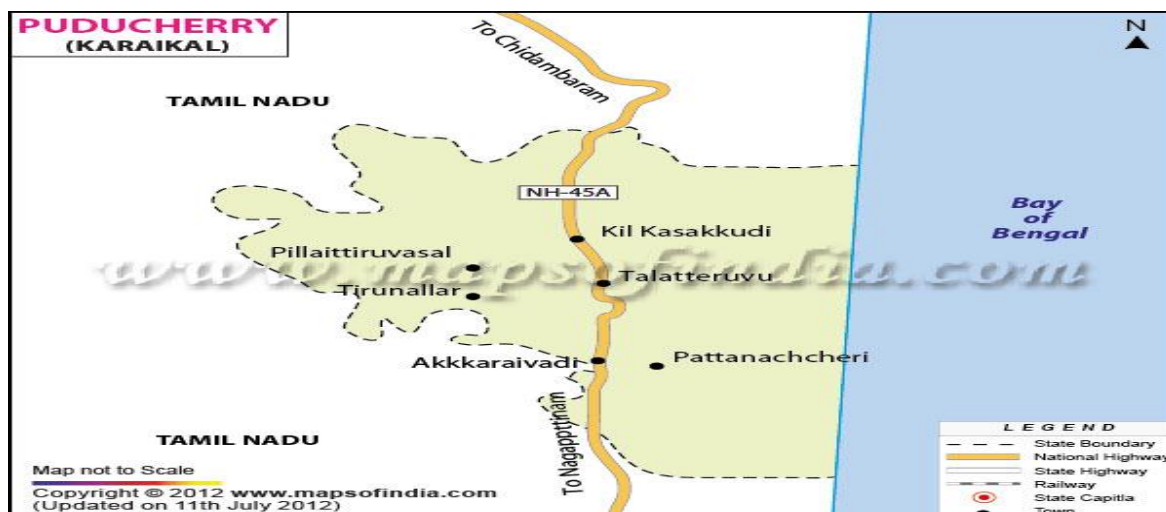


Figure 18

**District Profile**

|   |   |                             |
|---|---|-----------------------------|
| <b>Population of the District (2011 Census)</b> | - | 200,222 lakhs               |
| <b>Area</b>                                     | - | 160 Sq.Kms.                 |
| <b>Literacy Rate</b>                            | - | 87.83%                      |
| <b>Sex Ratio</b>                                | - | 1048 Females per 1000 Males |
| <b>Density</b>                                  | - | 1,252 Persons per sq. km    |

SOURCE : Census 2011, www.py.gov.in

**No. of Institutions**

| Sl/No.       | Stage         | Govt. + L.B | Govt. Aided | EGS / AIE | Total      |
|--------------|---------------|-------------|-------------|-----------|------------|
| 1            | Primary       | 63          | 1           | 0         | 64         |
| 2            | Upper Primary | 41          | 5           | 0         | 46         |
| <b>Total</b> |               | <b>104</b>  | <b>6</b>    | <b>0</b>  | <b>110</b> |

Figure 19

**Enrolment & No. of Beneficiaries under MDM Scheme in PS and UPS during 2010-11, 2011-12 & 2012-13 of Karikal District**

| Year           | No. of Children Enrolled |      |       | No. of children opted for MDM (No. of Beneficiaries) |      |       |
|----------------|--------------------------|------|-------|--|------|-------|
|                | PS                       | UPS  | Total | PS   | UPS  | Total |
| <b>2010-11</b> | 11419                    | 8416 | 19835 | 11268  | 4736 | 16004 |
| <b>2011-12</b> | 9314                     | 7874 | 17188 | 8280   | 7711 | 15991 |
| <b>2012-13</b> | 8364                     | 6993 | 15357 | 7569   | 6940 | 14509 |

Figure 20

**Target for implementation of MDM in 2013-14**

|   |  |     |
|---|--|-----|
| 1 | Numbers of Block to be covered                         | N/A |
| 2 | Numbers of schools proposed to be covered (Primary)    | 64  |
| 3 | Numbers of schools proposed to be covered (Upper Pry.) | 46  |
| 4 | Total Numbers of schools proposed (Pry. + Upper Pry.)  | 110 |

Figure 21

**3.4 Performance of the State during last 3 financial years**

**State Level.**

**1. Coverage of Schools**

| SN                | Stage        | 2010-11    |            | 2011-12    |            | 2012-13    |            |
|-------------------|--------------|------------|------------|------------|------------|------------|------------|
|                   |              | Approval   | Coverage   | Approval   | Coverage   | Approval   | Coverage   |
| 1                 | Primary      | 251        | 251        | 251        | 251        | 251        | 251        |
| 2                 | Upp. Primary | 210        | 210        | 210        | 210        | 202        | 202        |
| <b>TOTAL</b>      |              | <b>461</b> | <b>461</b> | <b>461</b> | <b>461</b> | <b>453</b> | <b>453</b> |
| <b>% COVERAGE</b> |              | <b>100</b> |            | <b>100</b> |            | <b>100</b> |            |

Figure 22

**2. Coverage of Children & Working days**

| SN | Stage  | 2010-11      |                    | 2011-12      |                    | 2012-13      |                    |
|----|--|--------------|--------------------|--------------|--------------------|--------------|--------------------|
|    |  | Approved     | Beneficiaries      | Approved     | Beneficiaries      | Approved     | Beneficiaries      |
| 1  | <b>No. of Children</b>                         |              |                    |              |                    |              |                    |
|    | <b>PAB approval vs Coverage</b>                |              |                    |              |                    |              |                    |
|    | Primary  | 52046        | 50337<br>(97%)     | 50500        | 44066<br>(87%)     | 41250        | 35991<br>(87%)     |
|    | Upper Primary (including NCLP)                 | 39372        | 37801<br>(96%)     | 38000        | 35406<br>(93%)     | 41050        | 34445<br>(84%)     |
|    | <b>Total</b>                                   | <b>91418</b> | <b>88138 (96%)</b> | <b>88500</b> | <b>79472 (90%)</b> | <b>82300</b> | <b>70436 (86%)</b> |
| 2  | <b>Enrolment* vs Beneficiaries of Children</b> |              |                    |              |                    |              |                    |
|    | Primary  | 53357        | 50337<br>(94%)     | 45790        | 44066<br>(96%)     | 37440        | 35991(96%)         |

**Fifth Joint Review Mission - Mid Day Meal Puducherry**

|          |                            |                 |                 |                 |                    |                 |                   |
|----------|----------------------------|-----------------|-----------------|-----------------|--------------------|-----------------|-------------------|
|          | <b>Upper Primary</b>       | 45446           | 37801<br>(83%)  | 42421           | 35406<br>(83%)     | 35553           | 34445<br>(97%)    |
|          | <b>Total</b>               | <b>98803</b>    | <b>88138</b>    | <b>88211</b>    | <b>79472 (90%)</b> | <b>72993</b>    | <b>70436(96%)</b> |
| <b>3</b> | <b>No. of Working Days</b> |                 |                 |                 |                    |                 |                   |
|          | <b>Stage</b>               | <b>Approved</b> | <b>Coverage</b> | <b>Approved</b> | <b>Coverage</b>    | <b>Approved</b> | <b>Coverage</b>   |
|          | <b>Primary</b>             | 220             | 203 (92%)       | 210             | 201 (96%)          | 210             | 200 (95%)         |
|          | <b>Upper Primary</b>       | 220             | 203 (92%)       | 220             | 201 (91%)          | 220             | 200 (91%)         |
|          | <b>NCLP</b>                |                 |                 |                 |                    | 220             | 200 (91%)         |

**Figure 23**

**No. of Cook Cum Helpers Engaged**

| SN | Year    | No. of CCH approved by MDM-PAB | Engaged | % engaged |
|----|---------|--------------------------------|---------|-----------|
| 1  | 2010-11 | 1031                           | 1031    | 100%      |
| 2  | 2011-12 | 1031                           | 1031    | 100%      |
| 3  | 2012-13 | 1031                           | 1031    | 100%      |

**Figure 24**

| <b>Data Comparison of 1<sup>st</sup> QPR 2012-13 and 1<sup>st</sup> QPR 2013-14 against whole year approval and allocation</b> |                              |       |             |         |                              |         |             |        |
|--|------------------------------|-------|-------------|---------|------------------------------|---------|-------------|--------|
| Component  | 2012-13(1 <sup>st</sup> QTR) |       |             |         | 2013-14(1 <sup>st</sup> QTR) |         |             |        |
|  | Approval (2012-13)           |       | Coverage    |         | Approval (2013-14)           |         | Coverage    |        |
|  | Pry                          | Upry  | Pry         | Upry    | Pry                          | Upry    | Pry         | Upry   |
| <b>Institutions</b>  | 255                          | 211   | 255         | 211     | 255                          | 211     | 249         | 204    |
| <b>%</b>   |                              |       | 100%        | 100%    |                              |         | 98%         | 97%    |
| <b>Children</b>  | 41250                        | 41000 | 40069       | 37600   | 36000                        | 35000   | 14565       | 18670  |
| <b>%</b>   |                              |       | 97%         | 92%     |                              |         | 40%         | 53%    |
| <b>Enrolment</b>   | 40330                        | 40393 | 40069       | 35583   | 33578                        | 33420   | 14565       | 18670  |
| <b>%</b>   |                              |       | 99%         | 88%     |                              |         | 43%         | 56%    |
| <b>W. Days</b>   | 40                           | 40    | 35          | 35      | 40                           | 40      | 34          | 34     |
|  | Allocation (2012-13)         |       | Utilization |         | Allocation (2013-14)         |         | Utilization |        |
|  | Pry                          | Upry  | Pry         | Upry    | Pry                          | Upry    | Pry         | Upry   |
| <b>Foodgrains</b>  | 867.9                        | 1353  | 140.241     | 186.601 | 756                          | 1156.87 | 49.52       | 95.218 |
| <b>%</b>   |                              |       | 16%         | 14%     |                              |         | 7%          | 8%     |
| <b>Lifted</b>  |                              |       | 166.155     | 193.189 | 49.52                        | 63.48   | 49.52       | 63.48  |
| <b>%</b>   |                              |       | 84%         | 97%     |                              |         | 100%        | 150%   |



|                     |        |       |       |        |         |        |       |       |
|---------------------|--------|-------|-------|--------|---------|--------|-------|-------|
| <b>Cost of FG</b>   | 49.09  | 76.67 | 9.388 | 10.915 | 42.714  | 65.363 | 2.8   | 3.59  |
| <b>Cooking cost</b> | 201.84 | 314.8 | 32.67 | 43.42  | 187.164 | 285.11 | 11.54 | 22.15 |
| <b>%</b>            |        |       | 16%   | 14%    |         |        | 6%    | 8%    |
| <b>TA</b>           | 6.5    | 10.15 | 1.246 | 1.449  | 5.67    | 8.677  | 0.371 | 0.476 |
| <b>%</b>            |        |       | 19%   | 14%    |         |        | 7%    | 5%    |
| <b>MME</b>          | 5.38   | 7.87  | 0     | 0      | 120     |        | 0     | 0     |
| <b>%</b>            |        |       | 0%    | 0%     |         |        | 0%    | 0%    |
| <b>CCH</b>          | 556    | 475   | 556   | 475    | 556     | 475    | 556   | 475   |
| <b>%</b>            |        |       | 100%  | 100%   |         |        | 100%  | 100%  |
| <b>Hon</b>          | 41.7   | 35.63 | 12.51 | 11.69  | 41.7    | 35.63  | 8.34  | 7.125 |
| <b>%</b>            |        |       | 30%   | 33%    |         |        | 20%   | 20%   |
| <b>Inspection</b>   | 255    | 211   | 255   | 211    | 255     | 211    | 255   | 211   |
| <b>%</b>            |        |       | 100%  | 100%   |         |        | 100%  | 100%  |

**Figure 25**

**Progress of kitchen Devices**

| SN              | Sanctioned during 2006-07 to 2012-13 |       | Physical Progress of Kitchen Devices as on 30-09-2013 |      |                         |    |                 |    |
|-----------------|--------------------------------------|-------|---|------|-------------------------|----|-----------------|----|
|                 | PHY                                  | FIN   | Procured  |      | Procurement In Progress |    | Not yet started |    |
|                 |                                      |       | No .  | %    | No.                     | %  | No.             | %  |
| Kitchen Devices | 459                                  | 22.95 | 459   | 100% | 0                       | 0% | 0               | 0% |

**Figure 26**

**NOTE:**

Central assistance released towards the procurement of kitchen devices for schools during 2006-10 is ₹.15.40 lakhs for 308 units. In the year 2012-13 Rs.7.55 lakhs was released for 151 units. Hence, the total units sanctioned are 459 for which a total amount of Rs.22.95 lakhs has been released to the Govt. of Puducherry. The UT of Puducherry has procured 22 boilers and 110 transportation vessels as approved by the PAB. The total amount sanctioned so far for the procurement of kitchen devices stands to 100% utilisation.

**PROGRESS OF KITCHEN CUM STORES**

| Details      | Sanctioned during 2006-07 to 2012-13 | Physical Progress of Kitchen cum stores |      |             |    |                 |    |
|--------------|--------------------------------------|---|------|-------------|----|-----------------|----|
|              |                                      | Upto 2 <sup>nd</sup> QTR 2013-14        |      |             |    |                 |    |
|              |                                      | Constructed                             |      | In Progress |    | Not yet started |    |
|              |                                      | No .                                    | %    | No.         | %  | No.             | %  |
| Kitchen Shed | 92                                   | 92                                      | 100% | 0           | 0% | 0               | 0% |

Figure 27

**\*NOTE:**

Central Assistance of Rs.55.20 lakhs has been released towards the construction of kitchen cum stores. In Puducherry the practice of cooking of MDM in modernized centralized kitchens is being followed. Presently 13 centralised kitchens are functioning besides 69 school canteen centers. The Govt. of Puducherry intends to merge 43 School canteen centres in a phased manner after the construction of 3 more centralised kitchens. In Mahe due to difficult topographical conditions school canteen centres will continue to function. The unspent balance of ₹ 55.20 lakhs, received from GOI is available with the Govt. of Puducherry which will be spent in the phased manner for the construction of centralised kitchens. Recently a new centralised kitchen has been commissioned at Lawspet, at the cost of ₹.3 crores from the State budget, which caters 11,500 students per day.

**4 Observations**

**4.1 Observations on MDM implementation**

**1. Fund flow from State Government to Schools/cooking agency and the time taken in this process.**

The MDM is being implemented by the Department of School Education, Puducherry through the centralised kitchens / school canteen centres. The funds released by the GOI are sent to the Dept. of Finance which then transfers the funds to the Directorate of Accounts and Treasury (DAT) directly with a copy to Secretary Education Department, Puducherry who issues authorization and blocks expenditure sanction for the utilisation of funds by DAT. For utilizing the fund, the proposal is made through a note file. The Directorate of School Education approves the file. The expenditure is incurred and the bill is raised. The DSE forwards the bill to DAT with the due approval of competent authority. The DAT issues Cheque to clear the bill.

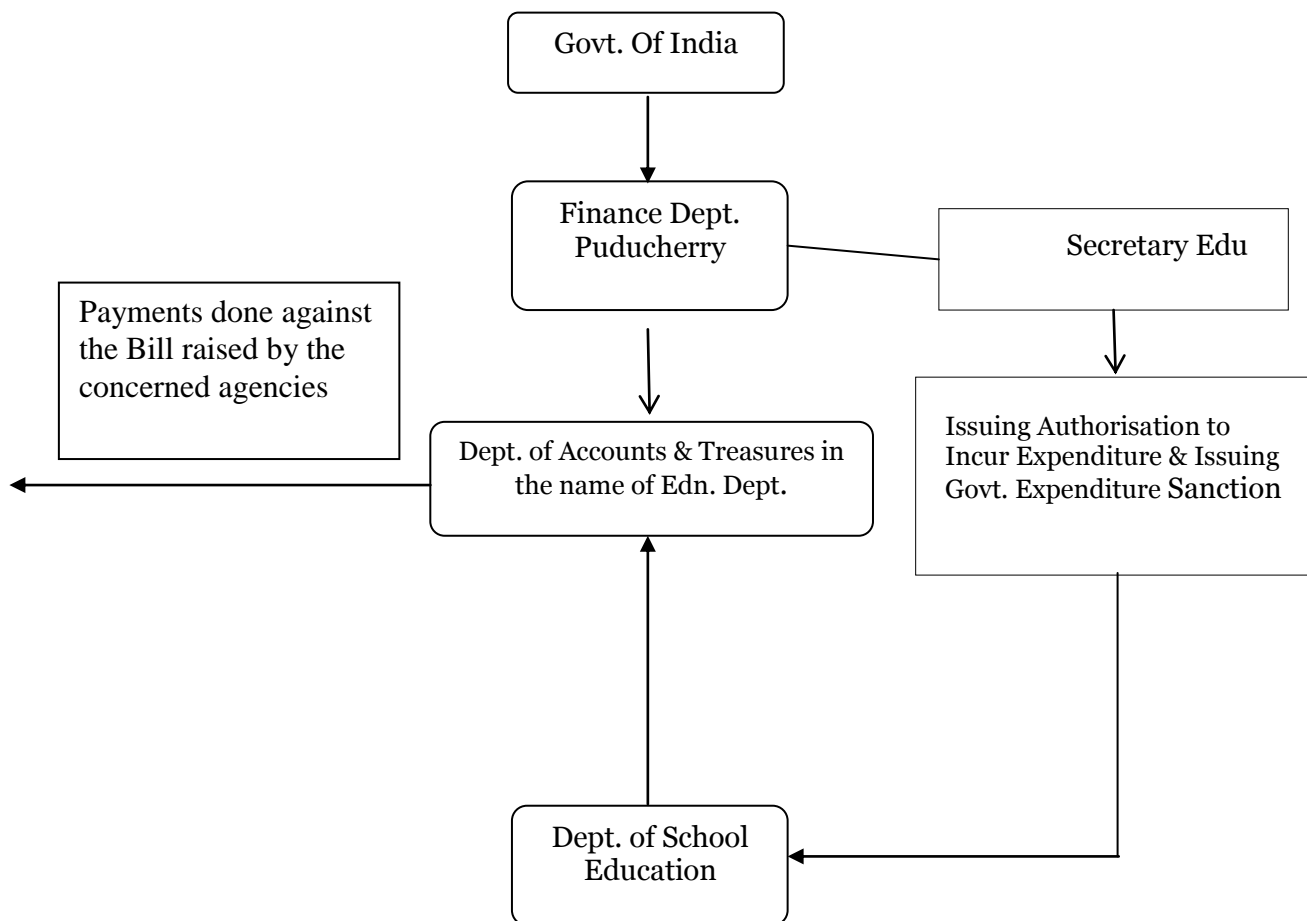


Figure 28 (Fund Flow Chart)

Thus, it would be observed that there is virtually no intermediary level in the release of funds because the funds are released directly by Finance Department to Directorate of Accounts & Treasury

**A) At State level**

**Funds flow**

| Components      | Date of fund received by the state from GOI | Date of fund received by the state (state share in advance) | Date of fund Approved and kept at DAT Head of Account | Gap     |
|-----------------|---|---|---|---------|
| cooking cost    | 18-04-2013                                  | 20-03-2013  | 07-05-2013  | 1 month |
| Kitchen Sheds   |   |   |   |         |
| Kitchen Devices |   |   |   |         |
| MME             | 18-04-2013                                  | 20-03-2013  | 07-05-2013  |         |
| Transportation  | 18-04-2013                                  | 20-03-2013  | 07-05-2013  |         |

Figure 29

| <b>Outlay and expenditure on amount released by the GOI upto 30th Sep. 2013</b> |  |                                   |  |                               |  |
|---|--|-----------------------------------|--|-------------------------------|--|
| <b>Components</b>   | <b>Funds Received from GOI (Adhoc)</b>                       | <b>Fund received by the state</b> | <b>Expenditure as on 30th September 2013 against fund received</b> | <b>Percentage Expenditure</b> | <b>Reason for low expenditure if any</b> |
| <b>Cost of Food Grains</b>  | 31.44  | 31.44                             | 26.41  | 84.00                         | NA                                       |
| <b>Cooking cost</b>   | 137.06   | 137.06                            | 162.397  | 118.49*                       |  |
| <b>Kitchen Sheds</b>  | Unspent balance Rs.55.20 lakhs is available for construction |                                   |  |                               |  |
| <b>Kitchen Devices</b>  |  |                                   |  | 100% procured                 |  |
| <b>MME</b>  | 5.76   | 5.76                              | 0.0013   |                               | Proposal under circulation               |
| <b>Transportation</b>   | 4.16   | 4.16                              | <b>4.70</b>  | <b>112.98*</b>                |  |
| <b>Honorarium to CCH</b>  | 19.33  | 19.33                             | <b>38.66</b>   | <b>200.00*</b>                | For 5 Months                             |
| <b>TOTAL</b>  | <b>197.75</b>  | <b>197.75</b>                     | <b>232.17</b>  | <b>117.40</b>                 |  |

**Figure 30**

*\* For Cooking Cost high expenditure incurred due to 7.5% hike in cooking cost effective from 1<sup>st</sup> July 2013. The high expenditure incurred under transportation assistance is due to payment of some pending bills up to 30<sup>th</sup> September 2013.*

Thus it is seen from the above table that GOI released an adhoc recurring assistance of 25% i.e. Rs. 197.88 Lac by sanction letter dated 18.04.2013. It is remarkable to note that State Govt. issued financial sanctions – both central and state share – on 17.05.2013. Thus, there was one month delay in receiving funds due to procedural delays. Rs.87.448 Lakhs was released as balance of 1st Instalment of recurring central assistance to Govt. of Puducherry on 21st November 2013 by GOI, after the adjustment of unspent balance. **JRM appreciates higher contributions by Union Territory Administration’s against its minimum mandated share.**

All the ingredients require for the preparation of MDM are procured by the cooperative societies/Govt. undertaking by limited tender system. The rate published by the Economics and Statistics Department’s monthly bulletin is adopted for the procurement of diet articles. The expenditure for the same is incurred by the cooperative societies and bill is raised. The bills are submitted to Directorate of School Education. After verification of the bills the DSE approves and forwards the bill to DAT for release of funds.

**Releases 2013-14- RECURRING ASSISTANCE**

| Sl.No.                         | Component/norm                          | Central Share          | Minimum Mandator y State share | Central Share               | Minimum Mandator y State share |
|--------------------------------|---|------------------------|--------------------------------|-----------------------------|--------------------------------|
|                                |   | Adhoc:Date: 18.04.2013 |                                | Ist Instalment: 21.11.2013  | Dt.                            |
| <i>1</i>                       | <i>2</i>                                | <i>3</i>               | <i>4</i>                       | <i>5</i>                    | <i>6</i>                       |
| <b>Primary + Upper Primary</b> |   |                        |                                |                             |                                |
| 1                              | Cost of Food grains                     | 31.44                  |                                | 1.14                        |                                |
| 2                              | Cooking Cost                            | 137.06                 | 46.69                          | (-)1.6                      | 0.00                           |
| 3                              | Honorarium to Cooks-cum-Helpers         | 19.33                  | 6.44                           | 27.07                       | 9.02                           |
| 4                              | Transportation Assistance               | 4.16                   |                                | 0.21                        |                                |
| 5                              | Management Monitoring &Evaluation (MME) | 5.76                   |                                | 60.42                       |                                |
|                                | <b>Total</b>                            | <b>197.75</b>          | <b>53.13</b>                   | <b>88.84(-)1.6=87.24</b>    |                                |
| <b>NCLP</b>                    |   |                        |                                |                             |                                |
| 6                              | Cost of Food grains                     | 0.02                   |                                | 0.04                        |                                |
| 7                              | Cooking Cost                            | 0.10                   | 0.33                           | 0.17                        | 0.06                           |
| 8                              | Transportation Assistance               | 0.003                  |                                | (-)0.0005                   |                                |
| 9                              | Management Monitoring &Evaluation (MME) | 0.005                  |                                |                             |                                |
|                                | TOTAL                                   | <b>0.13</b>            | <b>0.33</b>                    | <b>0.213(-0.005) =0.208</b> | <b>0.06</b>                    |
|                                | <b>Grand Total</b>                      | <b>197.88</b>          | <b>53.46</b>                   | <b>87.448</b>               | <b>9.08</b>                    |

**Figure 31**

**The Dept. of School Education has not received till today the balance of 1st instalment released by GOI. In the above table the expenditure shown by the State Govt. is up to 30th September 2013 against ad hoc release. Hence, there is a delay in the release of the 1st instalment**

- 2. Management and monitoring of the scheme from state to school level, clear roles and responsibilities of officials at all levels.**

## MANAGEMENT AND MONITORING

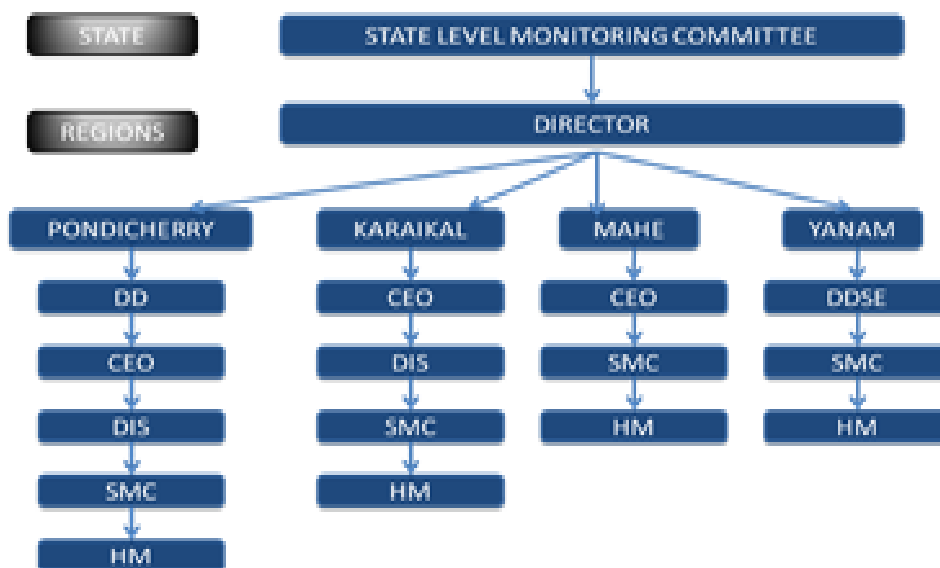


Figure 32 ( Management and monitoring Structure )

|                                 |  |
|---------------------------------|--|
| State level                     | State Level Monitoring Committee is the top most monitoring body   |
| Directorate of School Education | The Directorate of School Education is the next level of monitoring headed by the Director and a Deputy Director below is dedicated to monitor the implementation of MDM as the nodal officer in the Union Territory.  |
| Regional level                  | In Puducherry, Karaikal and Mahe regions the Chief Educational Officer (CEO) and in Yanam the Delegate of the Director of School Education (DDSE), are the entrusted Officers to monitor the implementation of the MDM scheme in the 4 regions.<br><br>In Puducherry and Karaikal regions the Deputy Inspector of Schools (DIS), are entrusted to monitor the implementation of the MDM scheme in the schools. |
| School level                    | The members of the School Management Committee along with the respective Heads of the Institution take the responsibility to monitoring the implementation of the MDM at school level.(State Government order regarding constitution of SMC is attached as Annexure No. 9)   |

Figure 33

The Nodal officers viz.the Chief Educational Officers and Deputy Inspector of Schools inspect the schools and the centralised kitchens to ensure that the quality of food prepared is of good quality and samples of diet articles are collected at random and get it tested as per the provisions of Prevention of Food Adulteration Act 1954. Such testing is being done periodically at the Public Health Laboratory, Govt. of Puducherry. So far no adverse reporting is received from the said laboratory.

The stock position available in the centralised kitchen is verified by the Store Superintendent of the department periodically. Also, surprise inspection is carried out by officers of different level to avoid pilferage and proper accounting of the materials. In order to strengthen the existing system of monitoring, a SMC is involved in monitoring the implementation of MDM. To make the system more transparent, the standards of diet and non-diet articles used in the preparation of meals is displayed in all the centralized kitchens as well as school canteen centres.

Efforts are being made to provide Toll Free number to receive complaints from the general public, if there is any complaint with regard to the implementation of the scheme

The JRM observed that only one meeting of SLSMC has been held against the mandated two meetings till November, 2013.MHRD has recently issued guidelines for convening meeting by the District Vigilance and Monitoring Committee under the chairmanship of Member of Parliament for monitoring MDM in each district once in a quarter. The first meeting of DVMC was to be convened before 31st July, 2013. The JRM was informed in the briefing meeting that till now the District Vigilance and Monitoring Committee has not been constituted and the Mission was assured that it will be constituted in near future.

As regards the district level meetings under the chairmanship of the District collector the JRM team was informed by the District collector Karaikal that so far no such meetings had been conducted. Although ,regular meetings are being held at district level but they are not especially conducted to review MDMS. Mission was assured that meetings to review MDMS will be conducted shortly.

It was informed that Chief Education Officer reviews the implementation of the scheme on monthly basis. Apart from this, District Inspector of School had the responsibility to do inspections regularly. But, the JRM observed that there is no inspection of the schools by any officer other than Chief Education Officers of the districts. If at all, CEO`s are inspecting the schools, they just sign the visitor register or Teacher attendance the schools as a record of their visit to the school.

It was observed that the SMC is constituted in all the schools, which also monitor the scheme. The meetings of SMC are held regularly but the agenda and contents of these meetings need to be improved for suggesting ways and means to improve the implementation of the MDM.

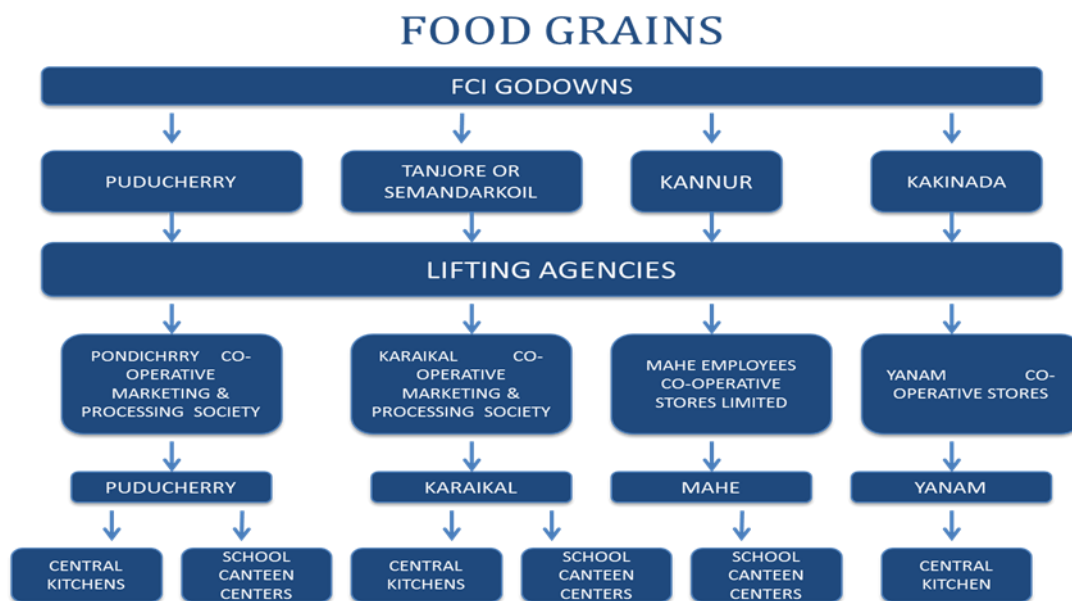
The Joint Review Mission found that the members of the SMC are not aware of their role and responsibilities but they are tasting the MDM whenever they visit the school. They need to be motivated for playing a more proactive role in the day to day monitoring of the scheme.

3. Implementation of the scheme with reference to availability of food grains, quality of MDM, regularity in serving MDM as per approved norms and mode of cooking.

**Food grains Management:-**

The lifting of rice from FCI and procurement of diet and non-diet articles is carried out in a centralised manner through the state Government agencies and cooperative societies and bills are reimbursed accordingly.

After ensuring the release of funds and getting allocation from the GOI, the Department of Education lifts rice from the respective godowns of the FCI in all the four (04) regions and payment is made thereafter. The flowchart is as follows



Mission was apprised of the fact that elaborate arrangements have been made at the centralised kitchens to store the rice lifted from the FCI. Normally, rice is lifted from the FCI every month. Team was informed that sometimes the rice lifted from FCI is not of fine quality, so arrangements has been made with the lifting agencies which are invariably co-operative institutions, to clean the rice and supply to the kitchens.

As mentioned above, Puducherry consists of four regions and rice is lifted for Puducherry and Karaikal regions from Cuddalore / Tanjore/ Nagapattinam and whereas the rice required for Mahe and Yanam is being lifted from Cannore and Kakinada respectively and the payments for rice lifted is made in a centralized manner by the Deputy Director (MDM) Puducherry by obtaining the vouchers/invoice from the respective FCI Divisional



Offices in the form of Demand Draft, after ascertaining the lifting particulars from the respective nodal officers.

**Food grains flow**

| <b>Components</b>  | <b>Date of food grain received by the state from GOI</b> | <b>Date of food grains release by State to directorate</b> | <b>Gap(No of days) between food grains receiving and releasing</b> | <b>Reason for delay if any</b> |
|--------------------|--|--|--|--------------------------------|
| <b>Food grains</b> | 18-04-2013   | 18-04-2013   | Nil  | Nil                            |

Figure 34

**Food grains utilization ( in MTs)**

| <b>Components</b>  | <b>Food grain Allocation</b> | <b>Food grains lifted</b> | <b>Food grains Utilized till 30th September 2013</b> | <b>Percentage Utilization</b> | <b>Reason for low utilization if any</b> |
|--------------------|------------------------------|---------------------------|--|-------------------------------|--|
| <b>Food grains</b> | 1912.87                      | 636                       | 636  | 33.25%                        | NA                                       |

Figure 35

*Regularity in serving MDM - Central Procurement of Groceries, Vegetables and other items for Centralised kitchen*

**GROCERIES, VEGETABLES AND EGG**

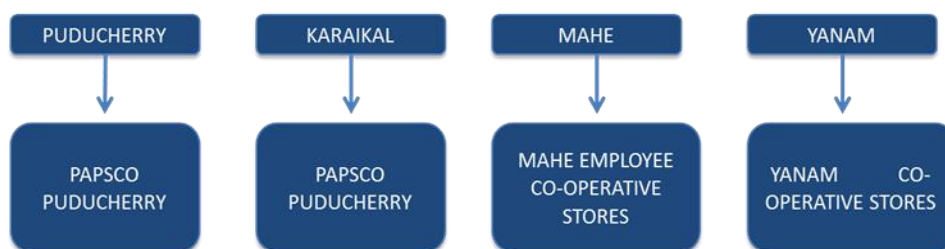


Figure 36

It is worthwhile to mention that in Puducherry, all the ingredients required for the preparation of MDM are being procured only from the co-operative institutions/Govt. undertakings by limited tender system and there is no role for private players. (Figure 37 mentioned below) The rate published by the Economics and Statistics Department’s monthly bulletin is being adopted for the procurement of all diet articles. This system is being followed in Puducherry for a quite long time in order to ensure transparency in the procurement of diet articles.

| S.No | ITEMS                | STANDARD     | QUANTITY  |
|------|----------------------|--------------|---|
| 1.   | Rice                 | I to IV Std  | 40g Exceeding 130 grams per student / day         |
| 2.   | Rice                 | V to XII Std | 40g Exceeding 160 grams per student / day         |
| 3.   | Oil                  | I to XII Std | 3 grams per student / day                         |
| 4.   | Masala Chilly Powder | I to XII Std | 3 grams per student / day in Karaikumburay day    |
| 5.   | Toor Dhall           | I to XII Std | 2.5 grams per student / day                       |
| 6.   | Egg                  | I to XII Std | 10 grams per student / day                        |
| 7.   | Tamarind             | I to XII Std | 2 grams per student / day                         |
| 8.   | Dry Chilly           | I to XII Std | 3 grams per student / day in Karaikumburay day    |
| 9.   | White Gram Dhall     | I to XII Std | 0.5 grams per student / day                       |
| 10.  | Mustard              | I to XII Std | 0.25 grams per student / day                      |
| 11.  | Turmeric Powder      | I to XII Std | 0.10 grams per student / day                      |
| 12.  | Garlic               | I to XII Std | 3 grams per student / day in Karaikumburay day    |
| 13.  | Onion Vadagam        | I to XII Std | 0.25 grams per student / day in Karaikumburay day |
| 14.  | Salt                 | I to XII Std | 4 grams per student / day                         |
| 15.  | Vegetables           | I to XII Std | 75 grams per student / day                        |

A Parliamentary Committee visited Puducherry (January,2008) to observe the implementation of the scheme appreciated the transparent procedures followed for the procurement of diet articles (ingredients) The parliamentary committee observed the following:

*“The committee welcomes these innovative schemes and wishes UT the very best in its endeavour to provide nutritional support to all school going children in the UT. The committee would appreciate with the methodology of implementation of MDM scheme initiated by the UT administration along with various UT level additions is brought before all the States/UTs as a case study by the Department. The committee firmly believes that quite a few states/UTs to come forward for adoption of innovative measures of UT of Puducherry in their set-ups”.*

The names of the co-operative institutions/Govt. undertakings who are supplying the diet articles in the all the 4 regions of Puducherry are detailed below.

**NAME OF THE SUPPLIER SUPPLYING OF DIET AND NON-DIET ITEMS UNDER MIDDAY MEALS SCHEME FOR THE YEAR 2013-14**

**PUDUCHERRY**

| SL.NO | NAME OF THE DIET & NON – DIET ITEMS | NAME OF THE SUPPLIERS   |
|-------|-------------------------------------|---|
| 1.    | FCI Rice                            | Lifting of FCI Rice from FCI godown and Distribution.M/s.Pondicherry Central Co-operative Processing Supply & Marketing Society Ltd.                          |
| 2.    | Open Market Rice                    | M/s.Pondicherry Central Co-operative Processing Supply & Marketing Society Ltd.   |
| 3.    | Groceries                           | M/s.Puducherry Agro Products, Food and Civil Supplies Corporation Ltd.  |
| 4.    | Masala Chilly Powder                | *Quality and Quantity of Masala chilly Powder is good, Procured from the Agency/s.Pondicherry Central Co-operative Processing Supply & Marketing Society Ltd. |
| 5.    | Vegetables                          | M/s.Puducherry Agro Products, Food and Civil Supplies Corporation Ltd.  |
| 6.    | Egg                                 | M/s.Puducherry Agro Products, Food and Civil Supplies   |

## Fifth Joint Review Mission - Mid Day Meal Puducherry

|     |   |  |
|-----|---|--|
|     |   | Corporation Ltd.   |
| 7.  | Diesel  | M/s.Puducherry Agro Products, Food and Civil Supplies Corporation Ltd.   |
| 8.  | LPG Cylinder  | IOC Agency M/s.Indra Indane service  |
| 9.  | Firewood  | Self Help Groups   |
| 10. | Transportation of Cooked Meals  | Cooked Meals Transported by vehicles from Centralised kitchen / School CanteenCentre to Various schools by the agency.<br><br>M/s.Puducherry Multi Purpose Service Providers Co-operative Society Ltd. |
| 11. | Servicing & Maintenance of Steam Boilers and Other Accessories Centralised kitchens | M/s.Puducherry Multi Purpose Service Providers Co-operative Society Ltd.   |

**Figure 37**

### KARAIKAL

| SL.NO | NAME OF THE DIET & NON – DIET ITEMS   | NAME OF THE SUPPLIERS   |
|-------|---|---|
| 1.    | FCI Rice  | Lifting of FCI Rice from FCI godown and Distribution.<br><br>M/s.Karaikal Central Co-operative Processing Marketing Society Ltd.  |
| 2.    | Open Market Rice  | M/s.Karaikal Central Co-operative Processing Marketing Society Ltd.   |
| 3.    | Groceries   | M/s.Puducherry Agro Products, Food and Civil Supplies Corporation Ltd.  |
| 4.    | Vegetables  | M/s.Puducherry Agro Products, Food and Civil Supplies Corporation Ltd.  |
| 5.    | Egg   | M/s.Puducherry Agro Products, Food and Civil Supplies Corporation Ltd.  |
| 6.    | Diesel  | M/s.Confed.   |
| 7.    | Firewood  | M/s.Karaikal Central Co-operative Processing Marketing Society Ltd.   |
| 8.    | Transportation of Cooked Meals  | Cooked Meals Transported by vehicles from Centralised kitchen / School CanteenCentre to Various schools by the agency.<br><br>M/s.Karaikal Co-operative Building Society Ltd. |
| 9.    | Servicing & Maintenance of Steam Boilers and Other Accessories Centralised kitchens | M/s.Puducherry Multi Purpose Service Providers Co-operative Society Ltd.  |

**Figure 38**



Figure 39

Government of Puducherry informed that double boiled rice is lifted from FCI and getting polished by the co-operative marketing society before it is being supplied to the schools. The lifting and polishing agency are selected through limited tender every year. However, rice required for the consumption of students above 9th std. is procured from the open market.

Grocery and vegetable is procured from a State Govt. Civil Supplies Corporation. JRM observed that in Puducherry open market is supplied twice a week for the preparation of the tomato rice as per the menu but it was found that the supply of the open market rice was quite irregular in Karaikal.

The JRM members came to know that open market rice was received only in July 2013 on the occasion of Shri Kamraj Birthday in Govt Centralized Kitchen T.R. Pallinam and school canteen centres, namely Bharathidasan Govt Middle School Neravy and Hussaina GHS Neravy of Karikal. The JRM appreciates the efforts of the Govt of Puducherry for procuring good quality dietary items and regular supply to the kitchens.

However, the Agmark certification mark was not found on all the items

#### 4. Role of Teachers:

- There is a widely held belief that teacher spend too much time in supervising the cooking operations thereby disrupting class-room processes.

The Government of India MDM guidelines categorically states that Teachers should under no circumstances be assigned responsibilities that will impede or interfere with teaching learning. The guidelines further state that Teachers should be involved in ensuring following:-

- Good quality, wholesome food is served to children

- The actual serving and eating is undertaken in a spirit of togetherness, under hygienic conditions, and in an orderly manner so that the entire process is completed in 30-40 minutes.

Thus the Teacher is expected to play an important role in the supervision of MDM.

A detailed MDM guidelines is already been issued in the year 2006 covering various instructions to teachers in the implementation of MDM.

The JRM observed that the teachers have been made in charge of the centralized kitchens and school canteen centres where they have to be present in the kitchens and supervise all the processes including preparation of the meals and dispatch the meals to the schools catered by the centralized kitchen/canteen centres. Apart from it they are responsible for maintenance of the records. Every day the teacher in charge has to maintain four registers which are as follows:

1. Student strength particulars,
2. Stock registers,
3. Vegetable stock registers and
4. Non diet item registers that includes vessels, Gas diesel.

The teacher is made in-charge of the centralized kitchens at the maximum stretch of 3-5 years with the willingness/involvement of the teacher concerned. The teacher in-charge has to come early in the morning between 4.00 am - 5.30 am depending on the number of the children catered by the kitchen and the time required for the preparation of the meals. In the school based canteen also, the teacher in-charge has to come before the school timings.

The head of institution has to look after the MDM preparations and dispatch of the meals to the schools attached to the canteens. Apart from this, the head of the institution has to maintain same registers to ensure accountability. They have to ensure the availability of food grains and other ingredients such as vegetables, pulses, oil/fats, salt, and condiments etc. for the preparation and serving of MDM in the schools. Thus, the teacher is virtually away from the school activities for the supervision of centralized kitchens and school canteen centres to ensure its smooth implementation.

The JRM enquired from the Principals/teachers whether MDM is affecting their teaching and learning activities. Most of them clarified that MDMS record is maintained by the teacher after completing their teaching and learning activities.

The mission observed that the teacher who is in charge of the kitchens, works from early morning till the food is dispatched and served. This hampers the teaching learning activities daily. The team interacted with the school canteen in charge and found that the teacher involved in MDMS is not able to take classes at all. It is the responsibility of the teachers to ensure that proper arrangements are made for the students when they take food.

A circular (attached in annexure no. 10) was issued on 24-7-13 by Puducherry Government instructing teachers to taste the MDM before it is actually served to the students. As per MDM guidelines, the teachers are also required to taste the MDM on rotation basis. In the schools JRM found that supervision registers were being maintained. Teachers were signing the register maintained for this purpose. The remarks related to tasting of food were however not being recorded in the register.

**5. Convergence with School Health Programme (SHP) for supplementation of micronutrients and health checkups and supply of spectacles to children suffering from refractive errors.**

The MDM guidelines envisage that necessary interventions like regular health check-ups, provision for de-worming tablets and supplementation of micronutrients like Vitamin 'A' dosage and IFA tablets in convergence with the school health programme being implemented under the national flagship programme the National Rural Health Mission (NRHM).

JRM was informed that there is a student health officer who visits schools periodically and monitors the health status of students. Individual health card is maintained for all students. Iron folic tablets were distributed to all students and the micro-nutrients are also supplied based on requirements under adolescent health programme. Under SSA, in collaboration with Aravind Eye Hospital 78459 students have been screened in last 3 years and 1670 spectacles have been distributed free of cost. 48 Eye surgeries were also done free of cost.

JRM found that there is good convergence with NRHM for the effective implementation of School Health Program in both the districts. Health cards are maintained at every school with regular health check-ups being carried out in most of the visited schools i.e. once in a year. Essential micronutrients have been provided to all the schools. JRM found that iron folic tablets were distributed in all the schools to the children who were anaemic. However, there is a need to focus on the supply of vitamin A and deworming tablets as they are not being supplied to all the schools regularly. It was appreciated that weighing machines were also available in all the schools funded from the State budget.

**6. Creation of Capital assets through kitchen-cum-store/kitchen devices**

There are 13 centralised kitchens constructed at an average cost of ₹ 1.5 crores. At present there are 57 school based kitchens in Puducherry, Karaikal and Mahe regions. There is no scope for construction of centralised kitchen in Mahe. There is a proposal to construct 2 more centralised kitchens in Pondicherry and Karaikal regions. An amount of ₹.55.20 lakhs released for the construction of school based kitchen sheds remains unspent and it is understood that it is proposed to be utilised for the construction of a centralized kitchen at KT Kuppam located in rural area of Puducherry.

Kitchen devices were purchased during the year 2012-13 at a cost of ₹.7.5 Lakhs. An amount of ₹.7.5 lakhs had been approved by the PAB for the year 2013-14.

JRM visited 3 centralized kitchens in Pondicherry and 2 centralised kitchens in Karaikal. JRM appreciates the Department of School Education for establishing well mechanised centralised kitchens.

The JRM observed that in the schools there were few eating plates which were supplied ten years back. Most of plates were found to be damaged and rusted. Currently there are no eating plates and the children have to bring their plates from home.

### 7. **Appointment of Cook-cum –Helpers (CCH) for preparation and serving of meal to the children and their capacity building.**

As per the GOI MDM guidelines, one cook-cum-helper is to be engaged in schools having enrolment from 1-25 children; Two cooks-cum-helpers may be engaged for the schools having enrolment from 26-100 students. One additional cook-cum-helper may be engaged for every additional enrolment of 100 students in the schools. They are to be paid honorarium @ Rs.1,000/- per month and this amount is to be shared between the Central and State Governments in the ratio of 75:25 except for North Eastern States where this sharing is to be done in the ratio of 90:10.

The PAB for MDM has approved engagement of 1031 CCH under MDM for Puducherry.

In the UT of Puducherry the MDM Scheme is being implemented since the year 1930 and initially the MDM were prepared in school canteen centers by utilizing the services of the local people on contingent basis. Subsequently in the year 1993-94, the concept of cooking the MDM in centralized kitchens were introduced and 9 centralised kitchens were constructed in a phased manner viz. CK Kurusukuppam, CK Villianur, CK Kalmandapam, CK Ariyankuppam, CK Kirumampakkam, CK Thondamanatham all in Puducherry Region and CK Thalatheru and CK TR Pattinam in Karaikal Region.



Figure 39 School canteen centre Koonichempet, Pondicherry

After the construction and activation of these centralised kitchens, the school canteen centers, located in and around the centralized kitchens were closed. In the year 1998, 174 individuals engaged by the school canteen centers were absorbed in the Dept. of School Education, as part-time meals carriers, by one Govt. Sanction by exempting age, educational qualification, enrollment in the employment exchange etc. In addition, the post of part-time cook was created and 137 individuals were recruited for the preparation of MDM in centralised kitchens/school canteen centers. These individuals are being engaged by the Dept of School Education for the preparation of MDM besides 54 Daily Rated Cook cum Helper posts were

created in the Dept. of School Education and the posts were filled as per the norms prescribed by the Govt.(order attached in annexure no. 11). In addition, there are regular Sanitary Assistant post are available in all the schools and their services are utilized for the distribution of MDM to the students in addition to their other routine works. Though the Govt. of India is providing an amount of Rs.750/- pm to cook cum helper, the Govt. of Puducherry is making payment of ₹ 5700/- pm to the PT Cook and ₹ 11,400/- pm to the daily rated cook and sanitary assistant.

The JRM observed that all the visited schools, canteen centres and centralized kitchens had engaged CCH of three categories namely part time, daily rated and vouchers. The part time workers had been engaged as cooks, vouchers were responsible for transporting and serving the MDM to the children in both the districts viz. Pondicherry and Karaikal .

The wages for the daily rated staff being ₹ 11, 160/- per month and ₹. 5830/- for the part-time CCH.

In addition, 736 staff has been being engaged in all the schools for the serving of MDM to the Students. Initially, there were only school canteen centres in Puducherry for the implementation of MDM and these canteens engaged local people for cooking and serving. Subsequently in the year 1998 the Govt of Puducherry issued one Government Sanction absorbing 174 individuals who were engaged in the canteens for the preparation of meals and they were absorbed in the services of the Department of School Education. The number of individuals engaged for the preparation/distribution of MDM in Puducherry is detailed below:

**DETAILS OF STAFF ENGAGED FOR MDM PREPARATION**

| <b>Description</b>   | <b>Centralised kitchen</b> | <b>School CanteenCenter</b> | <b>School Level</b> | <b>Total</b> |
|--|----------------------------|-----------------------------|---------------------|--------------|
| Daily Rated Cook   | 56                         | 31                          | 0                   | <b>87</b>    |
| Part Time Cook   | 141                        | 34                          | 0                   | <b>175</b>   |
| Part Time Sanit. Asst.                                     | 22                         | 11                          | 0                   | <b>33</b>    |
| Staff Engaged for the Transportation/ Distribution of food | 0                          | 0                           | 736                 | <b>736</b>   |
| <b>Grand Total</b>   | <b>219</b>                 | <b>76</b>                   | <b>736</b>          | <b>1031</b>  |

Figure 40



In all the visited schools, school canteen centers and centralized kitchens in both the districts JRM found that there were adequate CCH. However, in some schools the teacher was found to be serving meals as there were less number of CCH for the purpose. The JRM is of the opinion that there is a need to either rationalize or engage more CCH as per the GOI MDM guidelines.

**8. Availability of dedicated staff for MDM at various levels.**

A D.O letter issued by Government of India dated 22.07.2013 has specified for setup of dedicated structure for MDM. The JRM found that an officer of Deputy Director rank at directorate level is the only dedicated officer for MDM. It has been observed that proper monitoring of the scheme at the state level and below is not been carried out because of the lack of dedicated structure for MDM is at various levels. The MME component of the scheme provides funds for setting up for appropriate structures at various levels starting from state to school. The roles and responsibility of the concerned authority at different levels should be clearly defined for rigorous monitoring of the scheme. There is a need to setup a dedicated structure for the implementation of MDM. This is also explains the reason for not utilizing the funds available under MME component.

**9. Maintenance of records at the level of school/cooking agency.**

The JRM during its visits to the schools, schools canteen centers/cluster kitchens (33) and (5) centralized kitchens in two districts checked the MDM feeding and school attendance register, stock register, SMC proceeding register, tasting registers etc.

Since there is a system of school canteen centres and centralized kitchens in the Puducherry, it was observed that there are certain set of the records being maintained for pre primary to class 12<sup>th</sup> students. The JRM found that the stock registers were maintained at all kitchens and proper record keeping with regard to the attendance in schools and the daily utilization of the meal as per the attendance was being maintained. Also, in school canteen centres and schools served by these canteen centres, records of daily attendance were found.

However, JRM found that the separate register for class 1 to 8 on the basis of beneficiaries was not maintained either at schools or canteen level.

The vehicle movement record and quantity of food supplied to the school was not found to be recorded in the registers. The JRM found that in two schools GPS Mutherapalayam and GMS Mutherapalayam in Pondicherry the food was delivered late and receipt of the quantity of food and time of receipt was not recorded.

The team appreciated that the most of the schools had fixed responsibility of teachers on rotation basis for supervision of kitchen and MDM and tasting of the meals before serving to the children. However, the record for the same has not been maintained properly in all schools.

JRM also observed that canteen in-charge and headmasters at the schools had kept the receipts regarding the supply of food grains, condiments and the cooking fuel which is praise worthy. SMC formation and the proceeding register were found in school.

However there is no separate recording of discussions or proceedings on MDM. Inspection registers were not found at all in any of the schools.

### 10. Availability of infrastructure, its adequacy and source of funding.

There are 13 centralised kitchens, all constructed through State's Fund in addition to the construction of various school canteen centers. An amount of Rs. 3 Crores was spent by the State Govt. towards the construction of CK at Lawspet, Pondicherry. All the CKs are equipped with modern cooking devices besides 3 CKs are LP gas based kitchens and remaining 10 Kitchens are diesel based.

There are separate vessels for the transportation of cooked meals from the kitchen to the schools attached and transport vehicles provided by the co-operative institutions are being utilized for the transportation of meals in a very secure manner. All the cooks engaged in the kitchens are experienced and also trained.



Figure 41 Boilers in centralised kitchen in Lawspet, Puducherry

**Mode of cooking:** The JRM visited a total of 33 schools and 5 centralized kitchens in both the districts. All the school canteen centres were using firewood as fuel for cooking MDM. Centralized kitchen were using LPG as fuel. The JRM is of the opinion that in school canteen centres LPG should be used for cooking. The State Government representative informed that they are establishing two more centralised kitchens. The school canteen centres would be closed as soon as these centralised kitchens are constructed/operationalized.



Figure 42

**Kitchen sheds:** Permanent structures of kitchen sheds were found in all the schools. However, there was smoke due to use of firewood as fuel. Mission appreciated that chimneys and exhaust fans were also installed in some kitchen sheds and they were well ventilated.

**Drinking water facilities:** It was found that most of the schools had the facility of safe drinking water with RO filters installed in every school. However, in few schools, they were not found working because of the technical problem. It was also reported by the teachers after any technical tear and wear, the repairing of the filters takes many days



thereby hampering in the provision of safe drinking water. JRM found that in two schools of Pondicherry district i.e. GPS Karayambuthur and GPS Irulansandai zone11, the source of drinking water was not safe. The water samples were taken from these schools and sent to public health laboratory, public health department.

Figure 43 (Multi tap water system)

**Toilet facilities** were available in all the schools. JRM found separate and functional toilets for boys and girls. The JRM appreciated that fire extinguishers/hydrants were available in all the schools,

However, fire hydrants were not found in centralized kitchen where large scale cooking, using LPG and Diesel, was being done with number of boilers, steam vessels, hot water boilers.

It was observed that dining hall was not available in most of the schools and as such there was no proper space for eating. MDM which was mainly being served in classrooms and open spaces.

JRM found that street dogs were straying in the campus while the food was being served to the children which is defeats the purpose of providing hygienic and safe meals to the children.

### 11. Payment of cost of food grains to FCI by the districts.

The Deputy Director, responsible for the implementation of the MDM in UT, makes the payment to the FCI directly in a centralized manner for all the 4 regions by obtaining the lifting details from the respective FCI Offices.

The details provided by the State officials regarding payment of cost of food grains to FCI are as follows.

| <b>Allotment of Food Grains in MTs</b> | <b>Total quantity lifted</b> | <b>Bill Raised by FCI</b> | <b>Payment to FCI</b> |
|--|------------------------------|---------------------------|-----------------------|
| 893.838                                | 636.105                      | Rs. 636.105               | Rs.35.94              |

Figure 44

The fund for the cost of food grains available with the government of Puducherry were ₹ 62.55 lakhs. The state had made payments of ₹ 26.41 lakhs, up to 30 September 2013. Hence there is no pendency of the bills.

**12. Involvement of NGO’s/Trust/Centralized kitchens by States/UTs Government in implementation of the Scheme**

There are 13 centralised kitchens in the UT of Puducherry and these kitchens are covering 80% of the beneficiaries under MDM scheme. Out of 13 centralised kitchens, 10 Kitchens are diesel based and 3 Kitchens are LP gas based. The name of the centralised kitchens, and the number of schools/students covered by each CK are detailed below:

| S.N 0. | REGION      | Name of the Centralised kitchen | No. of Schools Covered | No. of Students Covered |
|--------|-------------|---------------------------------|------------------------|-------------------------|
| 1      | Pondicherry | CK Kurusukuppam                 | 40                     | 8483                    |
| 2      | Pondicherry | CK Mettupalayam                 |                        |                         |
| 3      | Pondicherry | CK pillaichavady                | 13                     | 4205                    |
| 4      | Pondicherry | CK lawspet                      | 68                     | 11503                   |
| 5      | Pondicherry | CK villianur                    | 34                     | 8000                    |
| 6      | Pondicherry | CK Ariyankuppam                 |                        |                         |
| 7      | Pondicherry | CK Thondamanatham               | 25                     | 5400                    |
| 8      | Pondicherry | CK Kalmandapam                  | 16                     | 4362                    |
| 9      | Pondicherry | CK Kirumampakkam                | 28                     | 5200                    |
| 10     | Pondicherry | CK Embalam                      | 16                     | 4134                    |
| 11     | Karaikal    | CK thalatheru                   | 29                     | 5000                    |
| 12     | Karaikal    | CK tr Pattinam                  | 20                     | 2600                    |
| 13     | Yanam       | CK Yanam                        | NotProvided            | NotProvided             |

Figure 45

The centralised kitchen in Lawspet was found to be spacious but in other visited centralised kitchens there was not enough space. The fire fighting equipment was found to be insufficient in number to meet the emergency situation. all visited centralised kitchens had

no provisions for fire hydrants. One school based canteen centre was located adjacent to class rooms and was open from all sides thereby compromising with the safety of the children during any fire incident.

The lack of space also restricted movement of cooks and JRM was concerned about the health of the CCH which needs to be taken care off and attended on regular basis.

The transportation of cooked meals was being done open vehicles and the containers were loosely closed. There is a need for a more safer transportation of meals to the schools.



Figure 46 (Open transportation vans)



Figure 47 (Open food containers)

### **13. Management Information System (MIS) from school to block, district and State level to collect the information and dissemination to other stakeholders.**

The annual and monthly data to GoI MIS web portal had been fed till September 2013 i.e end of 2<sup>nd</sup> QPR 2013. The existence of central, cluster and school kitchen needs dedicated staff for collection of information and data feeding in MIS. Further, when MIS is integrated with IVRS directorate will require dedicated MIS cell with specialised staff to communicate the analysis of the data. Currently, delay in data entry is due to lack of dedicated staff for MIS. This also explains the non utilization of MME funds that are meant to support smooth functioning and monitoring of the MDM scheme.

The vehicle time and movement needs to be monitored and managed efficiently to reduce the time delay in preparation and delivery of MDM. Technological interventions such as GPS (Global Positioning System) can be installed in vehicles for tracking the vehicles from centralised kitchen to schools. JRM was informed that all schools in Puducherry have internet connectivity. The GPS system can help school management to track food movement on daily basis.

### **14. Involvement of Community in implementation of MDM Scheme**

Involvement of the community and their participation is the key factor in ensuring the effective implementation of any scheme and the sustainable development at large. Mission members tried to find out the involvement of various stakeholders viz., members

of SMC members, and mothers of the children, neighbouring community and other groups if any in the selected districts.

In all the schools visited by the Mission in both the districts, SMC registers were available in all of the schools, but were not maintained properly. It was observed that there were very less number of meetings held in the schools and also MDM was not the subject of the discussions in these meetings.

On interacting with children whose parents were the members of the committee, it was found that their mothers come for the meeting but they have never taste the food and enquired about the meal. Mission recommends that for ensuring the participation of the community, more and more efforts must be made to create awareness among the parents and other community members. Attention needs to be paid to engage the SMC's/MTA's, especially with parents from weaker sections where there were first generation learners.

#### **15. Status of MIS integration with IVRS for monitoring of the Scheme**

Manual mode of collection of information is incomplete and cumbersome. A dynamic system needs support of real time information system. Puducherry MDM can be implemented on integration of IVRS with MIS. The status of annual and monthly data entry in MDM-MIS web portal of Govt. Of India is attached in **Annexure no 6&7**

#### **16. Status of tasting of the meal by the teacher/ member of SMC**

In pursuance to the guidelines dated 22nd July, 2013 issued by Govt. of India, the Government of Puducherry had issued necessary instructions to the school authorities for tasting of the meals before serving to the children and prescribed maintenance of register for recording this fact. (Order attached as annexure no. 10)

The team observed that the responsibility of tasting the food on rotational basis had been assigned to teachers. However, in a large number of the schools, the prescribed register was not maintained properly, though it was informed by the school authorities that the food was in fact tasted by the teachers before being served to the children but they put their signatures on the registers before the preparation of MDM.

During interaction in GPS Indiranagar in Pondicherry, a teacher expressed some reservations regarding tasting of MDM before serving to the children. The JRM is of the strong opinion that there should be proper training and counseling of the teachers with regard to tasting of meals on daily basis and record keeping. It is suggested that all schools maintain the registers separately and to record the daily tasting of food with specific remarks by the designated teacher/parents after tasting the food.

### 17. Status of Safe storage and proper supply of ingredients to schools.

JRM found good storage facilities of the food grains and ingredients at school level and centralized kitchens with separate almirah and racks for each item proper labels. Cooking oil was kept in separate containers. However, storage bin should be arranged for food grains.

As per the recent guidelines issued in respect of quality, safety and hygiene by the Government of India vide its letter 1-4/2013-Desk (MDM) dated 22nd July, 2013 to all States/UTs all the major ingredients i.e. pulses, cooking oil, spices other condiments should be Agmark certified. It was observed that all the major ingredients items from food grain to groceries and vegetables are supplied by various cooperatives societies in both the districts.

All the ingredients were found to well packaged, but the Agmark or equivalent certification was not found of on any of the items being used. JRM recommends the use of only Agmark certified ingredients for preparation of the MDM and periodic scientific testing of the ingredients procured by the societies.



Figure 47(Safe storage of items)

### 18. Status of Awareness about Mid- Day Meal Scheme.

There is a lack of awareness about the scheme at all levels of implementation. JRM observed that weekly menu, MDM Logo and entitlements were not being displayed in all the visited schools.

Also, there is no proper display of the menu and other important information in most of the centralized kitchens. Teachers of the schools which are being served by the school cluster kitchen and centralized kitchens are not even aware that there is a weekly menu fixed by the state for the meal to be served to the children.

JRM recommends an awareness drive at all levels i.e. from district level to school level for officials, parents, community, children and teachers regarding their role and responsibilities, guidelines and provisions under the scheme. The entitlements of children and MDM logo as per the specifications given in the guidelines must be displayed at the prominent places in school. There is a need to create more awareness regarding the contingency/medical health plans for any occurrence of untoward incident at school level.

The team recommends that the number of ambulance helpline may also be painted prominently in all the schools. Also in accordance with the instructions issued by the State Govt. mentioned above the contact numbers of PHC/ Community Health Centres should be made available to the school authorities.

The guidelines also envisage that the entitlements and other benefits of the scheme should be publicised through TV, radio, print media etc. It is suggested to take steps for wide publicity of the entitlements and benefits of the scheme. It is also suggested that MDM month, preferably November, may be organized to see the preparedness and availability of the food grains and funds at various levels. The Ministry of HRD has developed two films on MDM which could also be used by States as part of the strategy for creating greater awareness about the entitlements under the scheme.

**19. Status of convening of District Monitoring and Vigilance Committee Meeting under the Chairmanship of Member of Parliament.**

JRM was informed that a proposal has been submitted to Govt. to constitute the District Level Monitoring Committee. A meeting of the monitoring committee will be convened immediately after the said committee is constituted. The State level Monitoring committee meeting was convened in the month of April 2013 under the chairmanship of the Chief Secretary.

It has been decided to convene the State Level Monitoring Committee once in 3 months. The District Level Monitoring Committee meetings will also be convened at periodical intervals. At present review is done by the Director and the Collector on need basis besides the weekly review being undertaken by the respective CEO.

**20. Status of testing of food samples by reputed institute.**

JRM was informed that as per the guidelines issued on 22nd July, 2013 by Govt. of India, the Government of Puducherry shall consider engaging CSIR institutes/National Accreditation board of laboratories recognized labs for carrying out sample checking of MDM, to ensure quality meal to the children. . So far the food samples have not been tested in Puducherry. It was informed that food samples will be tested by the Physical Health Laboratories, Puducherry regularly.

**21. Status of operationalization of Emergency Medical Plan**

The MDM Guidelines envisage that all necessary steps should be taken to avoid any untoward incident in the school. If any such accident does occur in the school, it should be responsibility of the Head Master to inform District Education Officer / District Health Officer / District Magistrate without any delay. All the States / UTs should issue necessary instructions for linkages with primary health centre / community health centre / district hospital to ensure early treatment of the children. The District authorities should ensure that prompt medical attention is provided to children in the nearby medical facility or by deputing a doctor to the school.



Government of Puducherry informed that the Dept of Revenue and Disaster Management has prepared Standard Operating Procedure for each Department to adopt in case of any disaster emergency. Under the SOP prescribed for Health Department, steps are taken in case of emergency. However, the requirement of having separate emergency medical plan for Education Department will be examined. JRM recommends that proper safety procedures should be prepared and drills for MDM be made at regular intervals at centralised kitchen and school levels. The contact numbers of administrative and medical officers should be painted and displayed along with the logo of MDM on prominent and accessible place of Centralised Kitchens and schools.

### **B. Nutritional Assessment**

Life cannot be sustained without adequate nourishment. Man needs adequate food for growth, development and to lead an active and healthy life. Nutrition during childhood years is of great important since it is formative years. It lays a foundation for good health through an individual's life time. If children do not received the nourishment they need under nutrition and malnutrition of one or other kind may result. Government of India introduce Mid Day Meal programme as a very important strategy to overcome malnutrition among children.

Assessment of nutritional status of children will help to determine the type, magnitude and distribution of malnutrition and the data will act as a base-line, from which progress can be gauged and any changes, planned or unplanned can be assessed. During this Joint Review Mission visit nutritional status of the beneficiaries of the Mid Day Meal Programme in Puducherry and Karaikal Districts were evaluated using the standardized techniques.

A Survey was conducted among primary, upper primary and middle schools of two districts of Puducherry to collect the following information with regard to Nutritional Assessment.

- Anthropometric Profile
- Clinical Symptoms of Nutritional Deficiencies
- Food Pattern
- Quality and Quantity of MDM served

### **Methodology**

#### **1. Selection of Sample**

A total of 771 children aged 5-13 years from 9 primary schools (I to V Std), 4 Middle Schools (VI to VIII Std), 7 High Schools (IX & X Std) and 1 Higher Secondary School (XI & XII Std) from the two districts namely Puducherry and Karaikal were selected (Appendix - I). Multi Stage Stratified Random Sampling was adopted for selection of children.

## 2. Assessment of Nutritional Status

### i. Anthropometric profile

The height, weight measurements of the selected children were taken using standardized techniques (Jeliffe, 1966). Body Mass Index (BMI) was calculated using the following equation given by Garrow (1981).

$$\text{BMI} = \frac{\text{Weight (kg)}}{\text{Height (m}^2\text{)}}$$



Figure 1

The height, weight and BMI were analyzed for Z scores using WHO Global Database on Child Growth and Malnutrition (WHO, 2007).

The children were classified into normal (-2SD to +1 SD), under nourished (<-2SD) and Over weight (+1 SD to + 3 SD) categories based on their weight for age (WAZ) and height for age ( HAZ). Similarly, based on their BMI Z-Scores, the children were classified into following categories;

#### Categories:

|                           |                   |
|---------------------------|-------------------|
| Normal                    | -2SD to + 1SD     |
| Moderately undernourished | - 2SD to -3SD     |
| Severely undernourished   | <-3SD             |
| Overweight                | + 1 SD to < + 3SD |
| Obese                     | ≥ +3SD            |



Figure 2

**Sampling:**

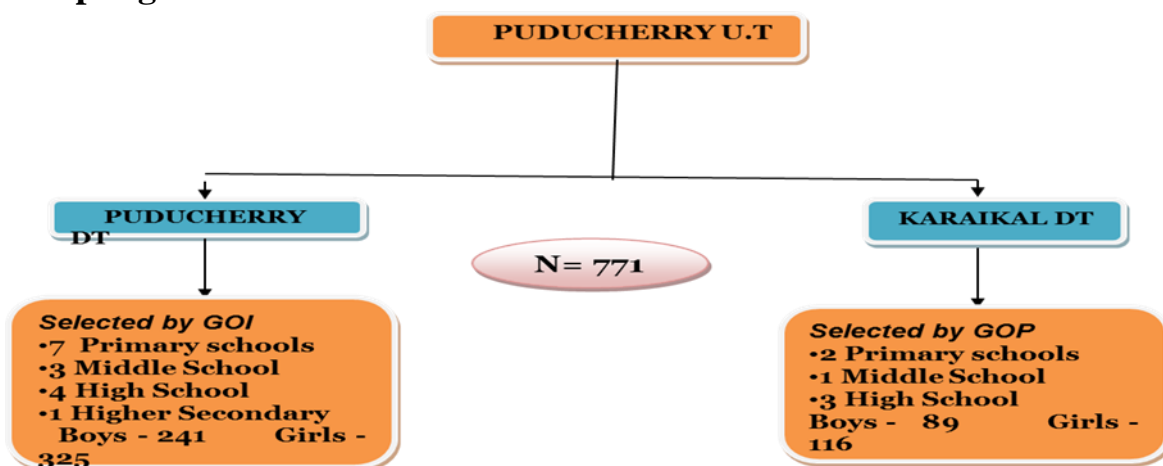


Figure 3

**ii. Clinical Symptoms**

The clinical symptoms of nutritional deficiency among the selected children were identified by the JRM team members using a schedule (Appendix - II).

**iii. Food Pattern**

The children were interviewed regarding their food pattern, break fast consumptions and benefits of Mid Day Meal.

**iv. Quality of MDM**

Sensory evaluation of the Mid Day Meal served to children among 20 schools was done by the JRM team during their visit at the lunch time.

**v. Quantity of MDM- Food Weighment**

The adequacy of the Mid Day Meal was evaluated through food weighment survey for children (I to VII) covering both the districts selected for the study. Due to paucity of time, the data was computed only for 26 children. Total raw ingredients taken for cooking, total cooked weight and individual cooked food consumption were taken following standard procedures to find out the actual intake of food by children.

**Findings of the Nutritional assessment**

**A. Anthropometric profile**

Anthropometric data (height and weight) have been gathered from children (Boys-320; Girls-441) covering 20 schools from Puducherry and Karaikal districts. Data on mid

upper circumference was not gathered since it is no longer considered as the reliable indicator for nutritional assessment of school children. Since the WHO reference standards (2007) for WAZ (weight for age) are available only for children upto 10 years while HAZ (Height for Age) and BAZ (BMI for age) are available upto 19 years, the analysis was done accordingly.

**i) Body Weight**

Table I and Figure 1 present the gender wise distribution of weight for age Z scores. Out of 566 children, only for 362 children (up to 10 yrs), Z scores were available for comparison.

**Gender Wise Data on Weight for Age Z Scores  
Puducherry District (n=362)**

| Category       | Classification         | Male      | Female    | Pooled data |
|----------------|------------------------|-----------|-----------|-------------|
|                |                        | N (%)     | N (%)     | N (%)       |
| <=-3SD         | Severely underweight   | 9 (5.9)   | 13 (6.2)  | 22 (6.1)    |
| -2.99 to -2 SD | Moderately Underweight | 39 (25.5) | 42 (20.1) | 81 (22.5)   |
| -1.99 to -1 SD | Mildly Underweight     | 49 (32)   | 80 (38.3) | 129 (35.6)  |
| -0.99 to 1 SD  | Normal                 | 51 (33.3) | 64 (30.6) | 115 (31.8)  |
| >1 SD          | Overweight/Obesity     | 5 (3.0)   | 10 (4.8)  | 15 (4.0)    |
| Total          |                        | 153 (100) | 209 (100) | 362 (100)   |

Figure 4

**WAZ available only for children upto 10 years**

Out of a total sample of 362 children, 35.6 per cent were mildly underweight and 22.5 per cent were moderately underweight. About 6.1 per cent children were severely underweight. The percentage of normal weight children was only 31.8 per cent. Children more than normal weight constituted 4 per cent. In general, the children of puducherry were found to be either normal or mild or moderately undernourished based on Z scores propose

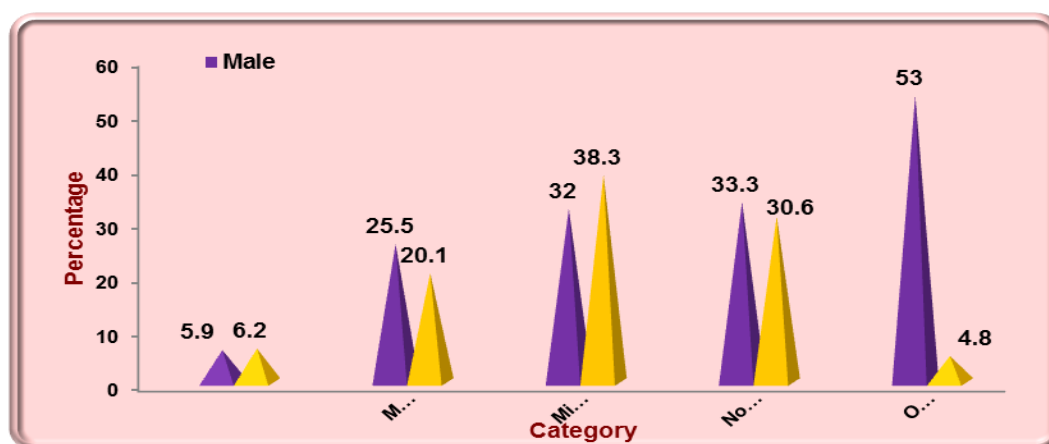


Figure 5 Categorization of Children by Weight for Age (Puducherry District)

**ii) Height**

Table II and Figure 2 present the gender wise data on Height for age Z scores for 566 children in Puducherry District.

**Gender wise data on Height for Age (Z score) N= 566**

**Puducherry District**

| Category      | Classification     | Male n (%)       | Female n (%)     | Pooled Data n (%) |
|---------------|--------------------|------------------|------------------|-------------------|
| <=-3SD        | Severely Stunted   | 2 (0.8)          | 5 (1.5)          | 7 (1.2)           |
| -2.99 to -2SD | Moderately Stunted | 24 (10.0)        | 24 (7.4)         | 48 (8.5)          |
| -1.99 to 1SD  | Mildly Stunted     | 73 (30.3)        | 112 (34.5)       | 185 (32.7)        |
| 0.99 to 1SD   | Normal             | 140 (58.1)       | 173 (53.2)       | 313 (55.3)        |
| >1SD          |                    | 2 (0.8)          | 11 (3.4)         | 13 (2.3)          |
| <b>Total</b>  |                    | <b>241 (100)</b> | <b>325 (100)</b> | <b>566 (100)</b>  |

Figure 6

Among the 566 children surveyed, 55.3 per cent were found to be in the normal category in terms of height. A maximum of 32.7 per cent of children were found to be mildly stunted. Moderate and Severe stunting were found among 8.5 and 1.2 per cent of children respectively. Only, 2.3 per cent children had a height more than the WHO normal values. The data regarding height for age was found to be somewhat similar among both boys and girls except among female who had greater height than boys (>1 SD).

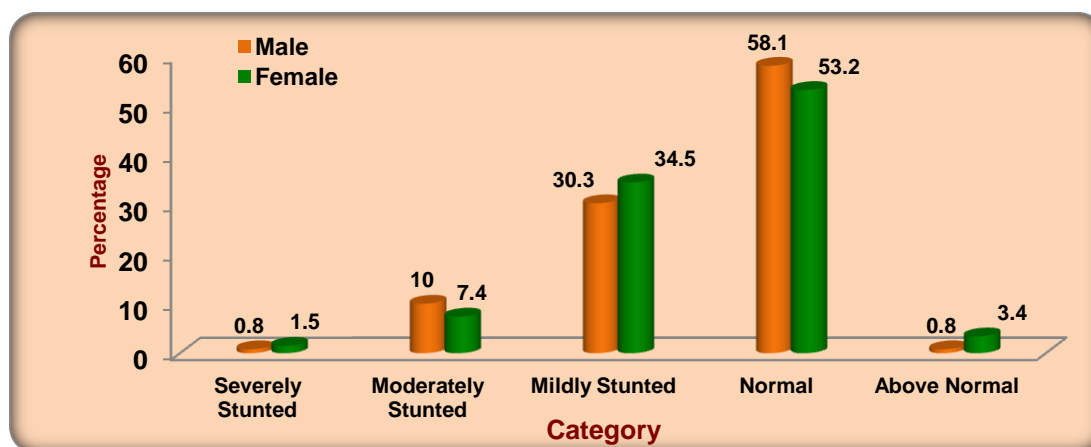


Figure 7 Categorization of Children by Height for Age (Puducherry District)

**iii) BMI OF CHILDREN**

The gender wise data on BMI for age Z scores for children in Puducherry district is presented in Table and Figure.

**Gender wise data on BMI for Age (Z score)  
Puducherry District N= 566**

| Category      | Classification          | Male n (%)       | Female n (%z)    | Pooled n (%)     |
|---------------|-------------------------|------------------|------------------|------------------|
| <=-3SD        | Severely Malnourished   | 30 (12.4)        | 18 (5.6)         | 48 (8.5)         |
| -2.99 to -2SD | Moderately Malnourished | 52 (21.6)        | 38 (11.7)        | 90 (15.9)        |
| -1.99 to 1SD  | Mildly Malnourished     | 70 (29.0)        | 90 (27.7)        | 160 (28.3)       |
| 0.99 to 1SD   | Normal                  | 77 (32.0)        | 155 (47.7)       | 232 (41.0)       |
| >1SD          | Overweight/Obese        | 12 (5.0)         | 24 (7.3)         | 36 (6.3)         |
| <b>Total</b>  |                         | <b>241 (100)</b> | <b>325 (100)</b> | <b>566 (100)</b> |

Figure 8

BMI values of children of Puducherry District revealed that a majority of 41 per cent were in the normal category. About 28.3 per cent of children were mildly malnourished followed by 15.9 per cent with moderate malnutrition. It is surprising to note that about 8.5 per cent were severely malnourished. On the contrary, 6.3 per cent of children were found to be overweight or obese. Mid Day Meal Programme may help in reducing the mild and moderate malnutrition in the long run.

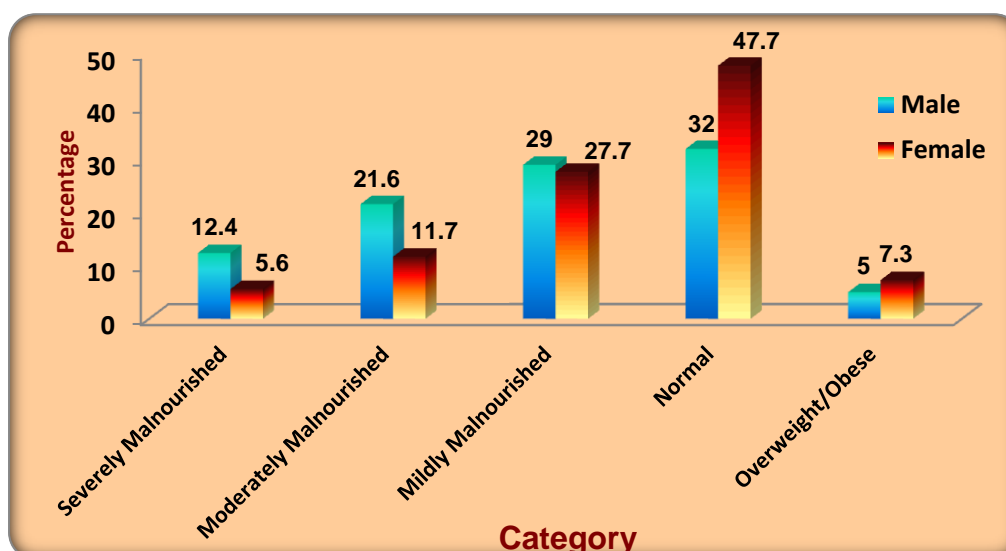


Figure 9 Categorization of Children by BMI for Age (Puducherry District)

**i) Body Weight**

Table IV and Figure presents the gender wise distribution of weight for age Z scores. Out of 205 children, only for 96 children (upto 10 yrs), Z scores were available for comparison.

**Gender wise data on Weight for Age z score  
Karaikal District N= 96**

| Category       | Classification         | Male            | Female          | Pooled Data     |
|----------------|------------------------|-----------------|-----------------|-----------------|
|                |                        | n(%)            | n (%)           | N (%)           |
| < = - 3SD      | Severely under weight  | 9 (17.3)        | 3 (6.8)         | 12 (12.5)       |
| - 2.99 to -2SD | Moderately underweight | 17 (32.7)       | 14 (31.8)       | 31(32.3)        |
| -1.99 to 1SD   | Mildly underweight     | 17 (32.7)       | 21 (47.7)       | 38 (39.7)       |
| 0.99 to 1SD    | Normal                 | 7 (13.5)        | 5 (11.4)        | 12 (12.5)       |
| >1SD           | Overweight/Obesity     | 2 (3.8)         | 1 (2.3)         | 3 (3.1)         |
| <b>Total</b>   |                        | <b>52 (100)</b> | <b>44 (100)</b> | <b>96 (100)</b> |

Figure 10 Note: WAZ Available only for children upto 10 years

The weight based Z Scores revealed that a very low percentage (12.5) of children were in the normal category whereas a maximum percentage (39.7%) of children were in the mild underweight category which is of great concern. It is also observed that 12.5 per cent of children were in severely underweight category. A very low (3.1) percentage of children were found to be obese or overweight. In general, children of Karaikal District were found to be mildly or moderately underweight.

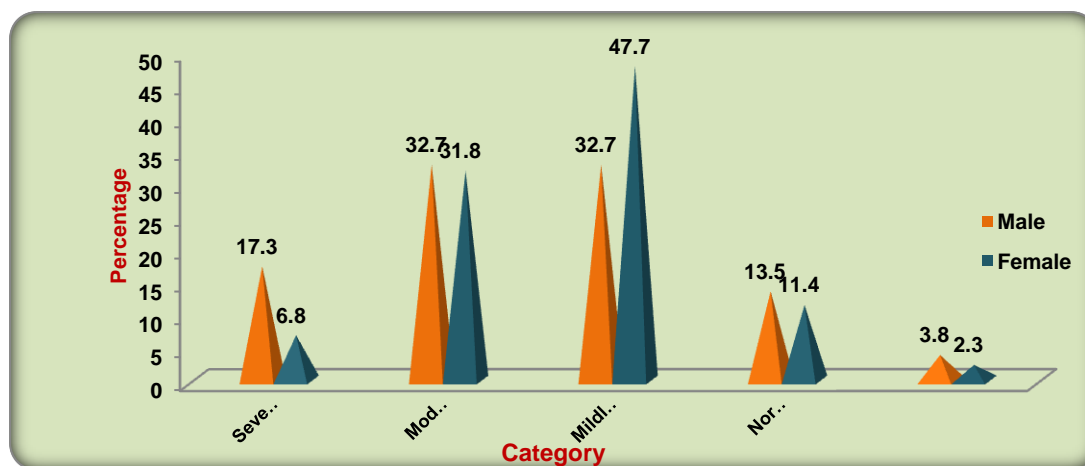


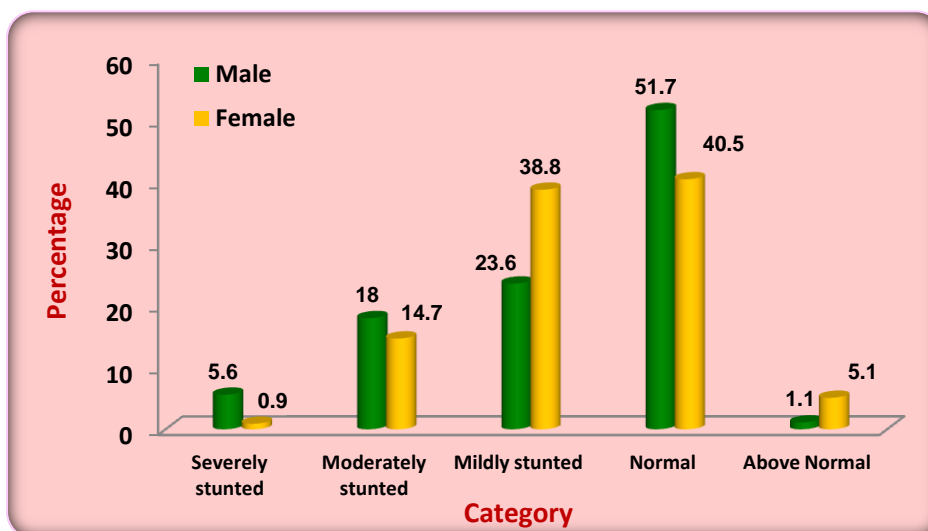
Figure 11 Categorization of Children by Weight for Age (Karaikal District)

**ii) Height**

Table V and Figure 5 presents the gender wise data on Height for age Z scores for children in Karaikal District.

**Gender wise Data on Height for Age Z Scores  
Karaikal District N= 205**

| Category       | Classification     | Male n (%)      | Female n (%)     | Pooled Data N (%) |
|----------------|--------------------|-----------------|------------------|-------------------|
| < = - 3SD      | Severely stunted   | 5 (5.6)         | 1 (0.9)          | 6 (2.9)           |
| - 2.99 to -2SD | Moderately stunted | 16 (18.0)       | 17 (14.7)        | 33 (16.1)         |
| -1.99 to 1SD   | Mildly stunted     | 21 (23.6)       | 45 (38.8)        | 66(32.2)          |
| 0.99 to 1SD    | Normal             | 46 (51.7)       | 47 (40.5)        | 93 (45.4)         |
| >1SD           |                    | 1 (1.1)         | 6 (5.1)          | 7 (3.4)           |
| <b>Total</b>   |                    | <b>89 (100)</b> | <b>116 (100)</b> | <b>205 (100)</b>  |



**Figure 12 Categorization of Children by Height for Age (Karaikal District)**

Among the 205 children surveyed, 45.4 per cent were in the normal category with regard to height. A majority of (32.2%) were mildly stunted followed by 16.1 per cent moderately stunted. Severe stunting was found among 2.9 per cent of children and nearly 3.4 per cent had a height more than 1 SD. In general, majority of children were found to have adequate height.

**iii) BMI of children**

The gender wise data on BMI for age Z scores for 205 children in Karaikal district is presented in Table and Figure.



**Gender wise data on BMI for Age (Z score)  
Karaikal District N= 205**

| Category      | Classification          | Male n (%)      | Female n (%)     | Pooled Data n (%) |
|---------------|-------------------------|-----------------|------------------|-------------------|
| <=-3SD        | Severely Malnourished   | 25 (28.1)       | 10 (8.6)         | 35 (17.1)         |
| -2.99 to -2SD | Moderately Malnourished | 27 (30.3)       | 40 (34.6)        | 67 (32.7)         |
| -1.99 to 1SD  | Mildly Malnourished     | 24 (27.0)       | 28 (24.1)        | 52 (25.4)         |
| 0.99 to 1SD   | Normal                  | 10 (11.2)       | 36 (31.0)        | 46 (22.4)         |
| >1SD          | Overweight/Obese        | 3 (3.4)         | 2 (1.7)          | 5 (2.4)           |
| <b>Total</b>  |                         | <b>89 (100)</b> | <b>116 (100)</b> | <b>205 (100)</b>  |

Figure 13

Based on the BMI values, a maximum percentage (32.7%) of children were found to be moderately malnourished followed by 25.4 per cent with mild malnutrition among children of Karaikal district. Severe malnutrition accounted among 17.1 per cent of children which is very alarming to note that in spite of Mid Day Meal feeding, there are severe malnutrition among children. Overweight and Obese children comprised only 2.4 per cent which is a welcome observation.

Figure

Age



**33 Categorization of Children by BMI for (Karaikal District)**

Figure 14

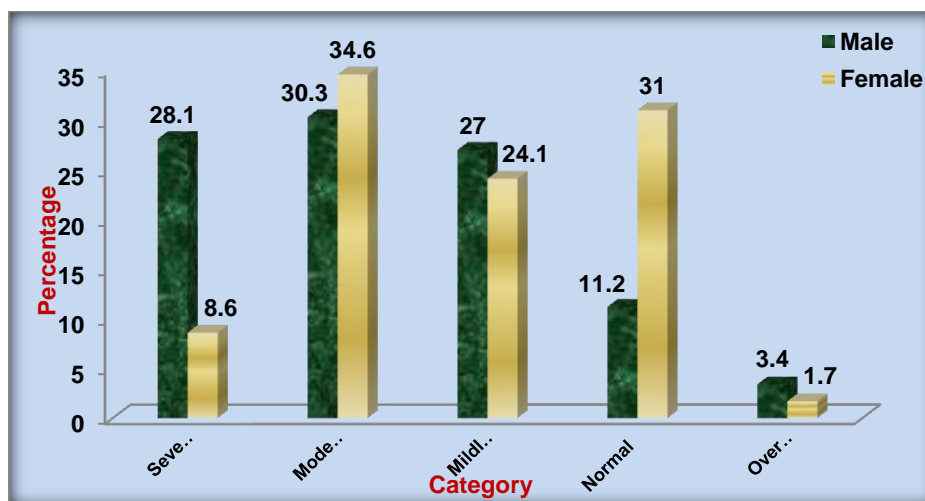


Figure 15

## PUDUCHERRY DT

### Severe Malnutrition

Out of a total sample of 771 children, more number (55) of boys were found to be in Severe malnutrition compared to 28 girls with severe malnutrition.

### B. Clinical Symptoms of Nutritional deficiencies

Out of a total sample of 771 children, clinical symptoms were absent among 468 children in Puducherry district and 90 children in Karaikal district. The table depicts the percentage of clinical symptoms observed among the children.

| Deficiency Symptoms*        | Puducherry<br>N= 566 |      | Karaikal<br>N=209 |      | Total<br>N= 771 |      |
|-----------------------------|----------------------|------|-------------------|------|-----------------|------|
|                             | No.                  | %    | No.               | %    | No.             | %    |
| Dental Caries               | 32                   | 6.0  | 22                | 11.0 | 54              | 6.0  |
| Mild Anaemia                | 28                   | 5.0  | 17                | 8.0  | 45              | 5.0  |
| Bitot's Spot                | -                    | -    | -                 | -    | -               | -    |
| Xerosis of Conjunctiva      | -                    | -    | -                 | -    | -               | -    |
| Dry Skin                    | 11                   | 2.0  | 21                | 10.0 | 32              | 4.0  |
| Poor Musculature            | 5                    | 1.0  | 4                 | 2.0  | 9               | 1.0  |
| Angular Stomatitis          | 10                   | 2.0  | 17                | 8.0  | 27              | 3.0  |
| Cheilosis                   | 11                   | 2.0  | 23                | 11.0 | 34              | 4.0  |
| Red Tongue                  | -                    | -    | -                 | -    | -               | -    |
| Deficit of Subcutaneous fat | -                    | -    | -                 | -    | -               | -    |
| Skin Infection              | 11                   | 2.0  | 15                | 7.0  | 26              | 3.0  |
| No Symptoms                 | 468                  | 82.7 | 90                | 43.0 | 558             | 72.4 |

Figure 16 Clinical Symptoms of Nutritional Deficiency

**\*Multiple Symptoms**

Among the total sample of 771 children surveyed, 72.4 per cent had no clinical symptoms of nutritional deficiency including protein and Vitamin A deficiency. However, dental caries was found among 6 per cent of surveyed children with more prevalence among Karaikal children. Mild anaemia was observed among 5 per cent of children. Dry skin, angular stomatitis and cheilosis was observed among 4.3 and 4 per cent of children respectively. Skin infection was found to be prevalent among 3 per cent of children. In general, the clinical profile of the children was found to be very satisfactory.

**C. Food Pattern**

Breakfast was consumed by a majority (90%) of children before coming to school. The most common items for breakfast included Idli, dosa with coconut chutney (84%), rice with sambhar or fish kolambu (5%) and left over rice (1%) with pickle. Children expressed their happiness to consume hot and tasty Mid Day Meal with potato and tasty curries. They also expressed that the Mid Day Meal satisfied their hunger (90%), helped to concentrate well in studies (80%) and be regular to school (73%).

**D. Quality and Quantity of the Mid day meal Quality**

The rice served in Mid Day Meal Programme, was polished because FCI rice was found to be not acceptable very much. The department of Food Science and Technology, Puducherry University has analyzed the quality of FCI rice on physical parameters including the swelling, solubility and pasting properties. The FCI rice showed a high viscosity making it less acceptable for consumption. The department recommended proper cleaning and slightly polishing of the FCI to make it more acceptable. The department also helped by recommending weekly menu considering the acceptability by the children.

The quality of vegetable was found to be good because they were received from a single source namely PAPSCO. With regard to cooking practices at the Centralised kitchen and school canteen, vegetables were cut and then washed. From the nutritional point of view, this practice is not good. Vegetables need to be thoroughly cleaned, washed and then cut and should be immediately used for cooking to retain nutrients. Iodized crystal salt is used in all the school canteens and centralised kitchen. Masala ingredients are supplied in good condition but not AGMARK certified.

***Quantity- Findings of Weighment survey:  
Food Intake***

The mean food intake among 26 children from the selected two districts were compared with MDM norms and presented in Table VIII

**Comparison of Mean Food Intake with MDM Norms N= 26**

| S.No | Foods      | MDM      | PDY   | U.T | Mean      |     | MDM         | PDY   | U.T | Mean      |     |
|------|------------|----------|-------|-----|-----------|-----|-------------|-------|-----|-----------|-----|
|      |            | Norms(g) | Norms |     | Intake(g) |     | Norms (g)   | Norms |     | Intake(g) |     |
|      |            | I-V Std  |       |     | PDY       | KKL | VI-VIII Std |       |     | PDY       | KKL |
| 1    | Rice       | 100      | 130   |     | 80        | 91  | 150         | 160   |     | 105       | 125 |
| 2    | Dhal       | 15       | 10    |     | 9.6       | 9   | 15          | 10    |     | 9.6       | 10  |
| 3    | Vegetables | 70       | 75    |     | 78        | 93  | 80          | 75    |     | 75        | 93  |
| 4    | Oil        | 3        | 5     |     | 3         | 3   | 3           | 5     |     | 2.8       | 3   |
| 5    | Salt       | 1.9      | 3     |     | 3         | 3   | 1.9         | 3     |     | 3         | 3   |
| 6    | Wholegram  | 20       | 12    |     | 12        | -   | 20          | 12    |     | 12        | -   |
| 7    | Egg        | 46       | -     |     | -         | -   | 46          | -     |     | -         | -   |

Figure 17

It is observed from the table that the rice intake ranged from 80-91 g which was found to be lesser than both MDM and Union Territory norms among I-V standard children. This is also found to be less than the 1/3<sup>rd</sup> RDA (ICMR) of 40-100g for primary school children.

In the case of upper primary children, again the cereal intake was found to be 105-125 g, which is less than the MDM and U.T norms and 1/3<sup>rd</sup> RDA (ICMR) of 80-140 g of cereals.

Children of Puducherry district consumed a mean of 9.6 g of pulses which was found to be less than the MDM and U.T norms of 15g and 10 g respectively. Similarly, Children of Karaikal district also consumed less amount of pulses compared with the norms. The Vegetable intake was found to be very much satisfactory and meets the allowance of U.T and MDM norms of 75-80g.

Oil intake by children was found to meet the Central norms of 3 g but less than the U.T norms of 5 g. Egg was not supplied during the review mission period.

Twenty grams of Whole gram in the form of channa was recommended by MDM to be supplied to children. Children of Puducherry district received a mean of 12 grams of channa along with poriyal which meets the U.T. norms but not the MDM norms of 20 grams. Karaikal children did not receive any channa during the JRM visit.

***Nutrient Intake***

The mean nutrient intake of the selected 26 children in comparison with the 1/3<sup>rd</sup> of RDA (2010) for nutrients (Energy, Protein, Fat and Iron) is presented in [Figure 18](#)

**Comparison of Mean Nutrient Intake with ICMR Norms**

**N=26**

Number in parenthesis indicates the sample size.

**\*ICMR (2010).**

**PDY- Puducherry**

**KKL –Karaikal**

| Age group      | 1/3rd RDA average d* | Energy (Kcal) |      | 1/3rd RDA averaged * | Protein (g) |       | 1/3rd RDA average d * | Fat (g) |      | 1/3rd RDA averaged * | Iron (mg) |      |
|----------------|----------------------|---------------|------|----------------------|-------------|-------|-----------------------|---------|------|----------------------|-----------|------|
|                |                      | PD Y          | KK L |                      | PD Y        | KKL   |                       | PDY     | KKL  |                      | PD Y      | KKL  |
| 4-9 yrs (14)   | 507                  | 418           | 420  | 8.25                 | 10.7        | 9.45  | 9.15                  | 4.25    | 4.71 | 4.8                  | 2.28      | 1.84 |
| 10-12 yrs (12) | 700                  | 510           | 540  | 13.4                 | 12.2        | 11.88 | 11.7                  | 5.35    | 4.87 | 8                    | 2.45      | 2.25 |

Figure 18

With regard to the intake of nutrients, the data was collected from a small sample of 26 children due to paucity of time. The Energy intake of children was found to be inadequate in most of the age groups compared to 1/3<sup>rd</sup> of the RDA. The protein intake ranged from 9.45 to 10.67 g among primary school children which was found to be more than the 1/3<sup>rd</sup> RDA (averaged) of 8.25 g. In the case of upper primary children, the protein intake (11.88 to 12.24g) was slightly lesser than the 1/3<sup>rd</sup> RDA of 13.4 grams.

The fat intake among both age group children was found to be less (4.25 to 5.35 g) compared with 1/3<sup>rd</sup> of the RDA of 9.15 to 11.7 g. Fat intake can be enhanced for children. The intake of Iron ranged from 1.84 to 2.45 mg among the two groups of children compared to the 1/3<sup>rd</sup> of the RDA ranging from 4.8- 8 mg. Inclusion of more vegetables or greens will help to increase the Iron intake in addition avoiding prolonged cooking may reduce nutritional loss and enhance Micro nutrients availability.

**Photographs of the visit of JRM to Puducherry**

**Provision of Food items and other ingredients in kitchens through centralized procurement.**



**Multi tap system for Hand Washing**

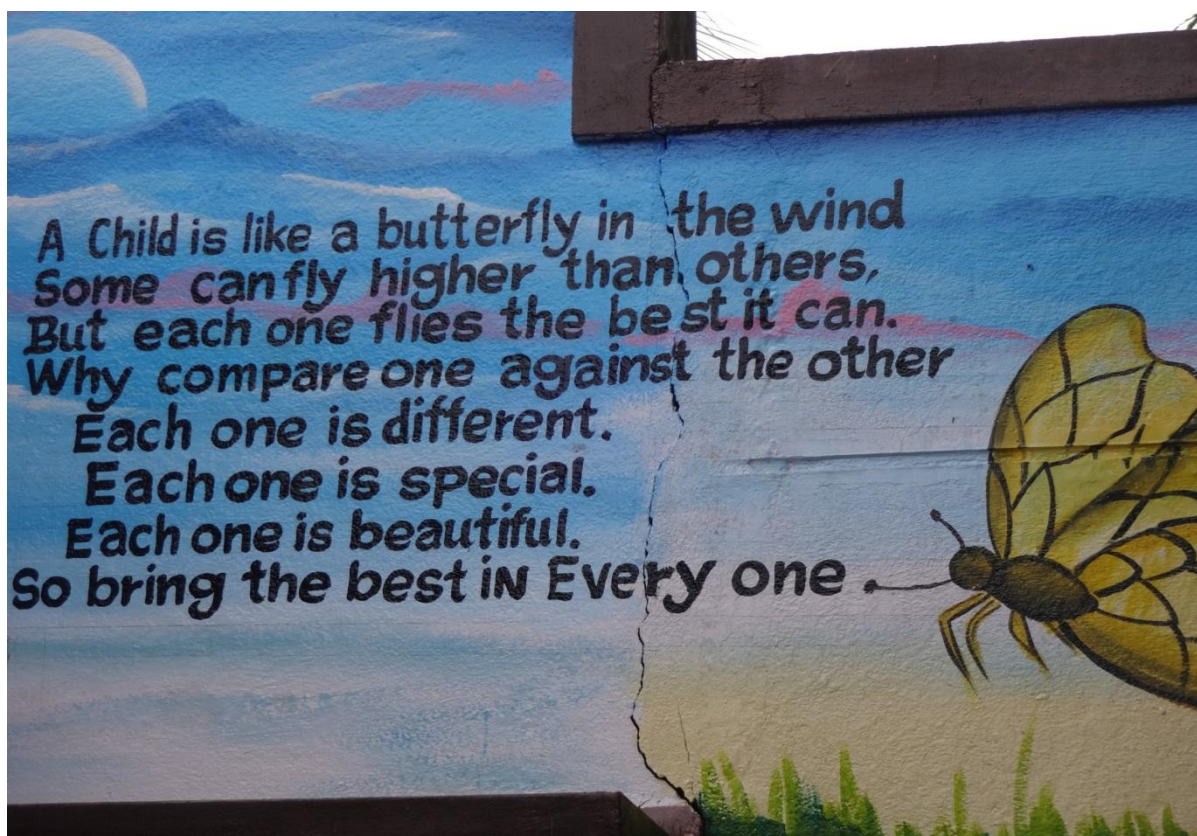


**Abundant use of Vegetables in MDM**



**Children having Mid Day Meal**





## 4.2 Recommendations:

### 1. Financial management and Fund flow:

JRM recommends that funds after sanction and allotment should be kept at disposal of Department of School education under the control of secretary/director for smooth implementations of MDMS. The financial powers should be delegated to the officers responsible for implementation of MDMS. This may expedite the fund availability after release of funds from GoI. Currently, balance of first Instalment released by GoI is still pending in the Finance department. The state finance department may be approached for seeking release of entire recurring central assistance of Rs 87.448 lakhs.

### 2. Dedicated management structure for MDM at all levels

JRM recommends the setting up of dedicated management structure at state, district and school level for the effective implementation of scheme.

### 3. Maintenance of separate record :

The team recommends that all the records regarding MDM must be maintained separately for class 1 to 8 at all levels. Record keeping of the beneficiaries served by the school canteen



centres and centralized kitchens will help better utilisation of funds, Food grains etc. and timely data feeding in GoI MIS web portal.

Time records of vehicle movement and receipt of food should be monitored and properly recorded at all levels.

#### **4. Tasting food by teachers**

It is recommended that the MDMS guidelines with respect to tasting of the meal by the teachers should be strictly followed. The teacher should keep a record of having tasted food in a register including remarks to be maintained for the purpose. It could be further strengthened by ensuring that one of the SMC members should also taste the food on a rotation basis along with the teachers before it is distributed to the children and recorded in the same register.

#### **5. Rationalization of engagement of cook-cum-helpers as per the norms and health check ups:**

The team recommends that a need analysis be done at all levels and the cook-cum-helpers must be engaged to reduce the additional burden on teacher who are forced to be away from teaching learning purpose. There should be regular health check ups of the cook-cum-helpers working in the kitchens.

#### **6. Creation of awareness about mid-day meal scheme:**

The MDM menu, entitlements and logo should be displayed prominently in schools. The team recommends that the number of ambulance helpline may also be painted prominently in all the schools. A curriculum on MDM may be included in the syllabus. It is also recommended that month may be celebrated as MDM month to see the preparedness and availability of food grains & funds at various level. The State may use the two films on MDM prepared by Ministry of HRD as a part of the strategy for creating awareness.

#### **7. Usage of Agmark certified ingredients :**

JRM recommends that Agmark or equivalent certification should be enforced for the items supplied through centralised procurements to the kitchens.

#### **8. State Review Mission**

The State Govt. should also constitute Review Mission at the State level and send them to the districts of the State every six months to review the implementation of the programme. The State Govt. officials looking after MDMS may join the Review Mission in other states under exchange scheme. Orientation visits to other states to see the implementation of the scheme will also widen the horizon of the officials.

#### **9. Testing of food samples by reputed institute**

It is recommended that the State may engage the services of any reputed institute on lines of testing done by Sriram Institute for Industrial Research in Govt. of NCT of Delhi to collect the samples from fields on random basis and test the samples on the parameters such as

microbiological presence or absence of e-coli, chemical parameters such as moisture content, fats, proteins and calorific value of the meal.

#### **10. Convening of Monitoring Committee under the Chairmanship of Member of Parliament.**

For the effective monitoring of the implementation of MDMS, JRM recommends for convening of District level Monitoring Committee under the chairpersonship of the Member of the Parliament. Meeting of State level Steering cum Monitoring Committee should be convened quarterly to review the implementation of MDMS.

#### **11. Emergency Medical Plan**

There is a need to create awareness regarding MDMS including the contingency/medical health plans at all level with the dos and don'ts in case of emergency. The Public Health Centers should also be equipped suitably to handle cases of food poisoning or any untoward incident in the school. Also in accordance with the instructions issued the contact numbers of PHC/ Community Health Centres should be prominently displayed in the school.

#### **12. Grievance Redressal Mechanism**

JRM recommends setting up of Grievance redressal mechanism for MDM Scheme. The efforts should be made to install a toll free number as early as possible for effective implementation of the scheme and designated cell and records be maintained for follow up of the grievance.

#### **13. MIS**

JRM recommends dedicated staff at all kitchen levels should be employed to feed information in GoI MIS web portal regularly. The annual and monthly entries should be completed in time bound manner. It also recommends use of funds available under MME component for hiring of manpower and purchasing of logistics.

#### **14. Technological intervention in MDMS:**

The Web based school information system should be put in place to get information of schools and kitchens. The vehicle hired for transporting raw material and cooked meals should be monitored through GPS technology for real time food supply chain system. Installation of solar powered cookers in centralized kitchen also be explored.

#### **15. Safety & Hygiene of the food**

The vehicle used for transportation of cooked food to the schools should be properly covered and the containers should be properly closed for safe, hygienic and secure delivery.

#### **16. Fire and safety provisions for Kitchens:**

The fire fighting equipments should be installed to meet the emergency situation.

All centralised kitchens should have fire hydrants. school based canteen centre located in schools should be reviewed for safety provisions . Entry and movement of children should be restricted from all sides in such kitchens.

#### **Recommendation from Nutritional aspect**

1. Health and Nutritional Education should be part of the Mid Day Meal Programme in which the teachers and cook cum helper can be educated and they in turn can educate the children during the Mid Day Meal time. For eg, the importance of vegetables in the diet, washing of hand sand plates before meals, proper cooking of meals and avoidance of wastage of foods.
2. Home Science colleges can be involved for giving education to the persons associated with Mid Day Meal Programme
3. The Kitchen structures of school canteens can have separate areas for washing and cooking. Water facility need to be adequately provided and the cooking area should be dry.
4. The transportation system used in schools for moving foods to the neighboring schools should be proper so that safe and uncontaminated food will reach the plate of the child.
5. For Storing provisions, schools need to be provided proper structures. Use of dunnage for rice bags should be emphasized.
6. The personnel employed in the centralised kitchen and other people involved in school canteens should also be medically examined periodically to assure their medical fitness.
7. Sambar prepared can be made little more thicker.
8. Proper education should be given to every one – Teachers, Parents and Kitchen staff with regard to food norms and other facilities made available by the government.
9. Cooked food to be served should be tasted by teachers, cooks or parents before serving and recorded in a register.
10. Proper maintenance of cleanliness in the kitchen, washing area and toilet areas need to be there.
11. Use of double fortified salt can be promoted.
12. In the centralised kitchen, vegetable cutting machines should be provided for effective preparation of Mid Day Meal
13. The Government can provide plates, tumblers and mats to the beneficiaries of mid day meal
14. Adequate cooking vessels need to be supplied to the school canteens
15. The Mid Day Meal logo is not found in most of schools and they don't know about the importance and functioning of Mid Day Meal programme

16. School kitchen need to have fire fighting systems and need to be periodically checked and refilled
17. Weekly menu need to be displayed on the boards and updated.
18. Seasonal fruits can be introduced in the Mid Day Meal to enhance the Micronutrient availability.
19. Construction of smokeless chullahs may be promoted wherever there is use of firewood in the school kitchen.
20. Suitable recipes using the raw ingredients recommended for Mid Day Meal are given in appendices.

The action taken report may be submitted to MHRD within 03 months from the date of submission of report.

Dr.U.K. Lakshmi

*U.K. Lakshmi*  
11/12/13

E. Vallavan

*E. Vallavan*  
11/12/13

Dr. M. Amirtha Veni

*M. Amirtha Veni*  
11/12/13

Dr. Suparna S. Pachouri

*Dr. Suparna S. Pachouri*  
11/12

Sanjay Singh

*Sanjay Singh*  
11/12

Date: 11.12.2013

Place: Pondicherry

Fifth Joint Review Mission - Mid Day Meal Puducherry

**Annexure- 1**

**Trends of Enrolment, Aailed MDM**

| S.no | District Name | Name of School                                       | Enrolment | Total no. of children availed MDM | Avg. no. of children availed MDM | % of children availed to enrollment |
|------|---------------|--|-----------|-----------------------------------|----------------------------------|-------------------------------------|
| 1    | Pondyicherry  | GPS Chettipet Zone-5                                 | 52        | 482                               | 48                               | 92.69                               |
| 2    | Pondyicherry  | GHS Thirukknaur                                      | 399       | 3520                              | 352                              | 88.22                               |
| 3    | Pondyicherry  | GPS Koonichempet                                     | 188       | 1749                              | 175                              | 93.03                               |
| 4    | Pondyicherry  | GHS Manalipet  | 141       | 1316                              | 132                              | 93.33                               |
| 5    | Pondyicherry  | GPS Mutharapapayam                                   | 75        | 637                               | 64                               | 84.93                               |
| 6    | Pondyicherry  | GHS Mutharapalayam                                   | 242       | 2152                              | 215                              | 88.93                               |
| 7    | Pondyicherry  | GPS Indira Nagar                                     | 281       | 2540                              | 254                              | 90.39                               |
| 8    | Pondyicherry  | CRN GHS Lawspet                                      | 270       | 2316                              | 232                              | 85.78                               |
| 9    | Pondyicherry  | GHS Pillayarkuppam (V)                               | 117       | 1109                              | 111                              | 94.79                               |
| 10   | Pondyicherry  | Govt Smart Primary School                            | 116       | 1017                              | 102                              | 87.67                               |
| 11   | Pondyicherry  | IMM Heart of Mary's Govt aided school,Reddiarpalayam | 750       | 6635                              | 664                              | 88.47                               |
| 12   | Pondyicherry  | GPS Thattanchavady(V)                                | 162       | 1402                              | 140                              | 86.54                               |
| 13   | Pondyicherry  | IMM Heart of Mary's Govt aided school, (Villinur)    | 521       | 4986                              | 499                              | 95.70                               |
| 14   | Pondyicherry  | Govt Girls Middle School Villianur                   | 455       | 4142                              | 414                              | 91.03                               |
| 15   | Pondyicherry  | GPS Thondamanatham Zone-5                            | 95        | 830                               | 83                               | 87.37                               |

## Fifth Joint Review Mission - Mid Day Meal Puducherry

Contd.

| <b>Trends of Enrolment, Availed MDM</b> |               |                                  |           |                                   |                                  |                                     |
|---|---------------|----------------------------------|-----------|-----------------------------------|----------------------------------|-------------------------------------|
| S.no                                    | District Name | Name of School                   | Enrolment | Total no. of children availed MDM | Avg. no. of children availed MDM | % of children availed to enrollment |
| 16                                      | Pondyicherry  | GPS Vadhanur                     | 327       | 3051                              | 305                              | 93.30                               |
| 17                                      | Pondyicherry  | GPS Andiarpalayam                | 61        | 558                               | 56                               | 91.48                               |
| 18                                      | Pondyicherry  | GHS Thirubuvanai                 | 178       | 1623                              | 162                              | 91.18                               |
| 19                                      | Pondyicherry  | GPS Kuppam                       | 200       | 1706                              | 171                              | 85.30                               |
| 20                                      | Pondyicherry  | GHS Panditdurasamy               | 198       | 1833                              | 183                              | 92.58                               |
| 21                                      | Pondyicherry  | GGHS Vallalar                    | 281       | 1212                              | 121                              | 43.13                               |
| 22                                      | Pondyicherry  | GPS Muthialpet                   | 184       | 1625                              | 163                              | 88.32                               |
| 23                                      | Pondyicherry  | GHS Keezhparkkalpet              | 148       | 1368                              | 137                              | 92.43                               |
| 24                                      | Pondyicherry  | GPS Karayambuthur                | 294       | 2894                              | 289                              | 98.44                               |
| 25                                      | Pondyicherry  | GPS Irulansandai zone11          | 55        | 449                               | 45                               | 81.64                               |
| 26                                      | Pondyicherry  | Pandasozhanallur                 | 174       | 1630                              | 163                              | 93.68                               |
| 27                                      | Pondyicherry  | GPS Kirumampakkam                | 187       | 1756                              | 176                              | 93.90                               |
| 28                                      | Karikal       | GGHS T.R. Pattinam               | 118       | 918                               | 92                               | 77.80                               |
| 29                                      | Karikal       | Bharathidasan Govt Middle School | 210       | 1720                              | 172                              | 81.90                               |
| 30                                      | Karikal       | Hussaaina GHS Neravi school      | 170       | 1019                              | 102                              | 59.94                               |

## Fifth Joint Review Mission - Mid Day Meal Puducherry

|              |         |                  |             |              |             |              |
|--------------|---------|------------------|-------------|--------------|-------------|--------------|
| 31           | Karikal | GPS POOVAM       | 88          | 734          | 73          | 83.41        |
| 32           | Karikal | GPS Rayanpalayan | 63          | 540          | 54          | 85.71        |
| 33           | Karikal | GPS Varichikudy  | 163         | 1359         | 136         | 83.37        |
| <b>Total</b> |         |                  | <b>6963</b> | <b>60828</b> | <b>6083</b> | <b>86.86</b> |

### Details of Infrastructure Facilities

**Annexure-2**

| S.No | District Name | Name of School       | Availability                    |                 | Infrastructure Facilities |             |                |                 |                   |                             |                |                   |
|------|---------------|----------------------|---------------------------------|-----------------|---------------------------|-------------|----------------|-----------------|-------------------|-----------------------------|----------------|-------------------|
|      |               |                      | Kitchen cum stores              | Kitchen Devices |                           | Cooking Gas |                |                 | Toilet Facilities |                             | Drinking Water | Fire Extinguisher |
|      |               |                      |                                 | Cooking         | Eating                    | LPG         | Kerosene Stove | Firewood/Chulha | Yes/No            | Separate for Boys and Girls | Yes/No         |                   |
| 1    | Ponducherry   | GPS Chettipet Zone-5 | Served by school canteenkitchen | NA              | No                        | NA          | NA             | NA              | YES               | YES                         | YES            | YES               |
| 2    | Ponducherry   | GHS Thirukknaur      | Served by school canteenkitchen | NA              | No                        | NA          | NA             | NA              | YES               | YES                         | YES            | YES               |
| 3    | Ponducherry   | GPS Koonichempet     | School CanteenCentre            | Yes             | No                        | NO          | NA             | Yes             | YES               | YES                         | YES            | YES               |
| 4    | Ponducherry   | GHS Manalipet        | Served by school canteenkitchen | NA              | NO                        | NA          | NA             | NA              | YES               | Yes                         | YES            | YES               |
| 5    | Ponducherry   | GPS Mutharapapayam   | Served by Centralized kitchen   | NA              | NO                        | NA          | NA             | NA              | YES               | YES                         | YES            | YES               |
| 6    | Ponducherry   | GHS Mutharapalayam   | Served by Centralized kitchen   | NA              | NO                        | NA          | NA             | NA              | YES               | Yes                         | YES            | YES               |
| 7    | Ponducherry   | GPS Indira Nagar     | Served by Centralized kitchen   | NA              | NO                        | NA          | NA             | NA              | YES               | Yes                         | YES            | YES               |
| 8    | Ponducherry   | CRN GHS Lawspet      | Served by Centralized kitchen   | NA              | NO                        | NA          | NA             | NA              | YES               | YES                         | YES            | YES               |

## Fifth Joint Review Mission - Mid Day Meal Puducherry

|    |             |  |                                 |    |    |    |    |    |     |     |     |     |
|----|-------------|--|---------------------------------|----|----|----|----|----|-----|-----|-----|-----|
| 9  | Ponducherry | GHS Pillayarkuppam (V)                               | Served by school canteenkitchen | NA | NO | NA | NA | NA | YES | YES | YES | YES |
| 10 | Ponducherry | Govt Smart Primary School                            | Served by school canteenkitchen | NA | NO | NA | NA | NA | YES | YES | YES | YES |
| 11 | Ponducherry | IMM Heart of Mary's Govt aided school,Reddiarpalayam | Served by school canteenkitchen | NA | NO | NA | NA | NA | YES | YES | YES | YES |
| 12 | Ponducherry | GPS Thattanchavady(V)                                | Served by school canteenkitchen | NA | NO | NA | NA | NA | YES | YES | YES | YES |
| 13 | Ponducherry | IMM Heart of Mary's Govt aided school, (Villinur)    | Served by Centralized kitchen   | NA | NO | NA | NA | NA | YES | YES | YES | YES |

Contd.

| S.No | District Name | Name of School                     | Availability                    |                 | Infrastructure Facilities |             |                |                 |                   |                             |                | Fire Extinguisher |
|------|---------------|------------------------------------|---------------------------------|-----------------|---------------------------|-------------|----------------|-----------------|-------------------|-----------------------------|----------------|-------------------|
|      |               |                                    | Kitchen cum stores              | Kitchen Devices |                           | Cooking Gas |                |                 | Toilet Facilities |                             | Drinking Water |                   |
|      |               |                                    |                                 | Cooking         | Eating                    | LPG         | Kerosene Stove | Firewood/Chulha | Yes/No            | Separate for Boys and Girls | Yes/No         |                   |
| 14   | Ponducherry   | Govt Girls Middle School Villianur | Served by school canteenkitchen | NA              | NO                        | NA          | NA             | NA              | YES               | YES                         | YES            | YES               |
| 15   | Ponducherry   | GPS Thondamanatham Zone-5          | Served by Centralized kitchen   | Yes             | NO                        | NO          | Desiel         | NO              | YES               | YES                         | YES            | YES               |
| 16   | Ponducherry   | GPS Vadhanur                       | Served by cluster kitchen       | YES             | No (from home)            | NO          | NA             | NA              | YES               | YES                         | YES            | YES               |
| 17   | Ponducherry   | GPS Andiarpalayam                  | Served by cluster kitchen       | YES             | No (from home)            | NO          | NA             | NA              | YES               | YES                         | YES            | YES               |
| 18   | Ponducherry   | GHS Thirubuvanai                   | Served by cluster kitchen       | YES             | No (from home)            | NO          | NA             | NA              | YES               | YES                         | YES            | YES               |



## Fifth Joint Review Mission - Mid Day Meal Puducherry

|    |             |                     |                               |     |                |    |    |     |     |     |     |     |
|----|-------------|---------------------|-------------------------------|-----|----------------|----|----|-----|-----|-----|-----|-----|
| 19 | Ponducherry | GPS Kuppam          | School Cluster Kitchen        | YES | No (from home) | NO | No | YES | YES | YES | YES | YES |
| 20 | Ponducherry | GHS Panditdurasamy  | Served by Cluster Kitchen     | YES | No (from home) | NO | NA | NA  | YES | YES | YES | YES |
| 21 | Ponducherry | GGHS Vallalar       | Served by Centralised Kitchen | No  | No (from home) | NO | NA | NA  | YES | YES | YES | YES |
| 22 | Ponducherry | GPS Muthialpet      | Served by Centralised Kitchen | NO  | No (from home) | na | NA | NA  | YES | YES | YES | YES |
| 23 | Ponducherry | GHS Keezhparkkalpet | School Cluster Kitchen        | yes | No (from home) | NO | NO | YES | YES | YES | YES | YES |
| 24 | Ponducherry | GPS Karayambuthur   | School Cluster Kitchen        | YES | No (from       | NO | NO | YES | YES | YES | YES | YES |
|    |             |                     |                               |     | home)          |    |    |     |     |     |     |     |

*Contd.*

| S.No | District Name | Name of School          | Availability                     |                 |                |             | Infrastructure Facilities |                 |                   |                             |                |                   |
|------|---------------|-------------------------|----------------------------------|-----------------|----------------|-------------|---------------------------|-----------------|-------------------|-----------------------------|----------------|-------------------|
|      |               |                         | Kitchen cum stores               | Kitchen Devices |                | Cooking Gas |                           |                 | Toilet Facilities |                             | Drinking Water | Fire Extinguisher |
|      |               |                         |                                  | Cooking         | Eating         | LPG         | Kerosene Stove            | Firewood/Chulha | Yes/No            | Separate for Boys and Girls | Yes/No         |                   |
| 25   | Ponducherry   | GPS Irulansandai zone11 | Served by School Cluster Kitchen | NO              | No (from home) | NA          | NA                        | NA              | YES               | YES                         | YES            | YES               |
| 26   | Ponducherry   | Pandasozhanallur        | Served by School Cluster Kitchen | NO              | No (from home) | NA          | NA                        | NA              | YES               | YES                         | YES            | YES               |
| 27   | Ponducherry   | GPS Kirumampakkam       | Served by School Cluster Kitchen | No              | No (from home) | NO          | NO                        | NA              | YES               | YES                         | YES            | YES               |
| 28   | Karikal       | GGHS T.R. Pattinam      | Served by Centralized kitchen    | NA              | NO             | NA          | NA                        | NA              | YES               | YES                         | YES            | YES               |

## Fifth Joint Review Mission - Mid Day Meal Puducherry

|    |         |                                  |                                 |     |                |    |    |     |     |     |     |     |
|----|---------|----------------------------------|---------------------------------|-----|----------------|----|----|-----|-----|-----|-----|-----|
| 29 | Karikal | Bharathidasan Govt Middle School | Served by school canteenkitchen | YES | No             | NO | NO | YES | YES | YES | YES | YES |
| 30 | Karikal | Hussaaina GHS Neravi school      | Served by school canteenkitchen | YES | NO             | NO | NO | YES | YES | YES | YES | YES |
| 31 | Karikal | GPS POOVAM                       | School Cluster Kitchen          | YES | No (from home) | no | NO | Yes | YES | YES | YES | YES |
| 32 | Karikal | GPS Rayanpalayan                 | SchoolKitchen                   | YES | No (from home) | NO | NO | YES | YES | YES | YES | YES |
| 33 | Karikal | GPS Varichikudy                  | School Cluster Kitchen          | YES | No (from home) | NO | NO | YES | YES | YES | YES | YES |

### Details of Cook-cum-Helpers

**Annexure-3**

| S.No | District Name | Name of the School   | Current Enrollment | Kitchen cum stores              | CCH | Sufficient as per norm | Honorary Paid up to |
|------|---------------|----------------------|--------------------|---------------------------------|-----|------------------------|---------------------|
|      |               |                      |                    |                                 |     | Yes/ No                |                     |
| 1    | Pondyerry     | GPS Chettipet Zone-5 | 52                 | Served by school canteenkitchen | 3   | YES                    | November 2013       |
| 2    | Pondyerry     | GHS Thiruknaur       | 399                | Served by school canteenkitchen | 6   | YES                    | November 2013       |
| 3    | Pondyerry     | GPS Koonichempet     | 188                | School CanteenCentre            | 6   | Yes                    | November 2013       |
| 4    | Pondyerry     | GHS Manalipet        | 141                | Served by school canteenkitchen | 2   | No                     | November 2013       |
| 5    | Pondyerry     | GPS Mutharapapayam   | 75                 | Served by Centralized kitchen   | 2   | YES                    | November 2013       |

## Fifth Joint Review Mission - Mid Day Meal Puducherry

|    |              |   |     |                                 |   |     |               |
|----|--------------|---|-----|---------------------------------|---|-----|---------------|
| 6  | Pondyicherry | GHS Mutharapalayam                                    | 242 | Served by Centralized kitchen   | 2 | NO  | November 2013 |
| 7  | Pondyicherry | GPS Indira Nagar                                      | 281 | Served by Centralized kitchen   | 3 | Yes | November 2013 |
| 8  | Pondyicherry | CRN GHS Lawspet                                       | 270 | Served by Centralized kitchen   | 3 | Yes | November 2013 |
| 9  | Pondyicherry | GHS Pillayarkuppam (V)                                | 117 | Served by school canteenkitchen | 2 | NO  | November 2013 |
| 10 | Pondyicherry | Govt Smart Primary School                             | 116 | Served by school canteenkitchen | 2 | No  | November 2013 |
| 11 | Pondyicherry | IMM Heart of Mary's Govt aided school, Reddiarpalayam | 750 | Served by school canteenkitchen | 4 | NO  | November 2013 |

### Details of Cook-cum-Helpers

Contd.

| S.No | District Name | Name of the School                                | Current Enrolment | Kitchen cum stores              | CCH | Sufficient as per norm | Honarium Paid upto |
|------|---------------|---|-------------------|---------------------------------|-----|------------------------|--------------------|
|      |               |   |                   |                                 |     | Yes/ No                |                    |
| 12   | Pondyicherry  | GPS Thattanchavady(V)                             | 162               | Served by school canteenkitchen | 2   | No                     | November 2013      |
| 13   | Pondyicherry  | IMM Heart of Mary's Govt aided school, (Villinur) | 521               | Served by Centralized kitchen   | 4   | NO                     | November 2013      |
| 14   | Pondyicherry  | Govt Girls Middle School Villianur                | 455               | Served by school canteenkitchen | 4   | No                     | November 2013      |

## Fifth Joint Review Mission - Mid Day Meal Puducherry

|    |              |                           |     |                               |   |     |               |
|----|--------------|---------------------------|-----|-------------------------------|---|-----|---------------|
| 15 | Pondy cherry | GPS Thondamanatham Zone-5 | 95  | Served by Centralized kitchen | 1 | Yes | November 2013 |
| 16 | Pondy cherry | GPS Vadhanur              | 327 | Served by cluster kitchen     | 5 | No  | November 2013 |
| 17 | Pondy cherry | GPS Andiarpalayam         | 61  | Served by cluster kitchen     | 2 | Yes | November 2013 |
| 18 | Pondy cherry | GHS Thirubuvanai          | 178 | Served by cluster kitchen     | 6 | Yes | November 2013 |
| 19 | Pondy cherry | GPS Kuppam                | 200 | School Cluster Kitchen        | 9 | Yes | November 2013 |
| 20 | Pondy cherry | GHS Panditdurasamy        | 198 | Served by Cluster Kitchen     | 0 | NA  | November 2013 |
| 21 | Pondy cherry | GGHS Vallalar             | 281 | Served by Centralised Kitchen | 0 | NA  | November 2013 |
| 22 | Pondy cherry | GPS Muthialpet            | 184 | Served by Centralised Kitchen | 0 | na  | November 2013 |

### Details of Cook-cum-Helpers

Contd.

| S.No | District Name | Name of the School      | Current Enrolment | Kitchen cum stores               | CCH | Sufficient as per norm | Honorarium Paid upto |
|------|---------------|-------------------------|-------------------|----------------------------------|-----|------------------------|----------------------|
| 23   | Pondy cherry  | GHS Keezhparkkalpet     | 148               | School Cluster Kitchen           | 5   | Yes                    | November 2013        |
| 24   | Pondy cherry  | GPS Karayambuthur       | 294               | School Cluster Kitchen           | 4   | Yes                    | November 2013        |
| 25   | Pondy cherry  | GPS Irulansandai zone11 | 55                | Served by School Cluster Kitchen | 0   | Na                     | November 2013        |

## Fifth Joint Review Mission - Mid Day Meal Puducherry

|    |              |                                  |     |                                  |   |     |               |
|----|--------------|----------------------------------|-----|----------------------------------|---|-----|---------------|
| 26 | Pondyicherry | Pandasozhanallur                 | 174 | Served by School Cluster Kitchen | 0 | Na  | November 2013 |
| 27 | Pondyicherry | GPS Kirumampakkam                | 187 | Served by School Cluster Kitchen | 0 | Na  | November 2013 |
| 28 | Karikal      | GGHS T.R. Pattinam               | 118 | Served by Centralized kitchen    | 3 | Yes | November 2013 |
| 29 | Karikal      | Bharathidasan Govt Middle School | 210 | Served by school canteenkitchen  | 5 | yes | November 2013 |
| 30 | Karikal      | Hussaaina GHS Neravi school      | 170 | Served by school canteenkitchen  | 3 | Yes | November 2013 |
| 31 | Karikal      | GPS POOVAM                       | 88  | School Cluster Kitchen           | 4 | Yes | November 2013 |
| 32 | Karikal      | GPS Rayanpalayan                 | 160 | SchoolKitchen                    | 3 | Yes | November 2013 |
| 33 | Karikal      | GPS Varichikudy                  | 163 | School Cluster Kitchen           | 4 | YES | November 2013 |

## Awareness and Publicity of MDMS

Annexure-4

| S.No | District Name | Name of School       |                                 | Display of Food Norms | Display of Menu | Display of MDM Logo |
|------|---------------|----------------------|---------------------------------|-----------------------|-----------------|---------------------|
|      |               |                      |                                 | Yes / No              | Yes / No        | Yes/No              |
| 1    | Pondyicherry  | GPS Chettipet Zone-5 | Served by school canteenkitchen | NO                    | NO              | NO                  |
| 2    | Pondyicherry  | GHS Thirukknaur      | Served by school canteenkitchen | NO                    | NO              | NO                  |

## Fifth Joint Review Mission - Mid Day Meal Puducherry

---

|    |              |  |                                 |     |     |    |
|----|--------------|--|---------------------------------|-----|-----|----|
| 3  | Pondyicherry | GPS Koonichempet                                     | School CanteenCentre            | Yes | Yes | No |
| 4  | Pondyicherry | GHS Manalipet  | Served by school canteenkitchen | NO  | NO  | NO |
| 5  | Pondyicherry | GPS Mutharapapayam                                   | Served by Centralized kitchen   | NO  | NO  | NO |
| 6  | Pondyicherry | GHS Mutharapalayam                                   | Served by Centralized kitchen   | NO  | NO  | NO |
| 7  | Pondyicherry | GPS Indira Nagar                                     | Served by Centralized kitchen   | NO  | NO  | NO |
| 8  | Pondyicherry | CRN GHS Lawspet                                      | Served by Centralized kitchen   | NO  | NO  | NO |
| 9  | Pondyicherry | GHS Pillayarkuppam (V)                               | Served by school canteenkitchen | NO  | NO  | NO |
| 10 | Pondyicherry | Govt Smart Primary School                            | Served by school canteenkitchen | NO  | NO  | NO |
| 11 | Pondyicherry | IMM Heart of Mary's Govt aided school,Reddiarpalayam | Served by school canteenkitchen | NO  | NO  | NO |

Contd.

| S.No | District Name | Name of School                                    |                                 | Display of Food Norms | Display of Menu | Display of MDM Logo |
|------|---------------|---|---------------------------------|-----------------------|-----------------|---------------------|
| 12   | Pondyicherry  | GPS Thattanchavady(V)                             | Served by school canteenkitchen | NO                    | NO              | NO                  |
| 13   | Pondyicherry  | IMM Heart of Mary's Govt aided school, (Villinur) | Served by Centralized kitchen   | NO                    | NO              | NO                  |
| 14   | Pondyicherry  | Govt Girls Middle School Villianur                | Served by school canteenkitchen | NO                    | NO              | NO                  |

## Fifth Joint Review Mission - Mid Day Meal Puducherry

|    |              |                           |                               |                     |                     |                             |
|----|--------------|---------------------------|-------------------------------|---------------------|---------------------|-----------------------------|
| 15 | Pondyicherry | GPS Thondamanatham Zone-5 | Served by Centralized kitchen | Yes                 | Yes                 | No                          |
| 16 | Pondyicherry | GPS Vadhanur              | Served by cluster kitchen     | NO                  | NO                  | NO                          |
| 17 | Pondyicherry | GPS Andiarpalayam         | Served by cluster kitchen     | NO                  | NO                  | No                          |
| 18 | Pondyicherry | GHS Thirubuvanai          | Served by cluster kitchen     | NO                  | NO                  | Yes                         |
| 19 | Pondyicherry | GPS Kuppam                | School Cluster Kitchen        | Yes (on blackboard) | Yes (on blackboard) | Yes (pasted on wall, paper) |
| 20 | Pondyicherry | GHS Panditdurasamy        | Served by Cluster Kitchen     | NO                  | NO                  | NO                          |
| 21 | Pondyicherry | GGHS Vallalar             | Served by Centralised Kitchen | NO                  | NO                  | NO                          |
| 22 | Pondyicherry | GPS Muthialpet            | Served by Centralised Kitchen | NO                  | NO                  | NO                          |
| 23 | Pondyicherry | GHS Keezhparkkalpet       | School Cluster Kitchen        | YES                 | Yes                 | YES                         |

Contd.

| S.No | District Name | Name of School          |                                  | Display of Food Norms | Display of Menu | Display of MDM Logo |
|------|---------------|-------------------------|----------------------------------|-----------------------|-----------------|---------------------|
| 24   | Pondyicherry  | GPS Karayambuthur       | School Cluster Kitchen           | NO                    | YES             | YES                 |
| 25   | Pondyicherry  | GPS Irulansandai zone11 | Served by School Cluster Kitchen | NO                    | No              | NO                  |
| 26   | Pondyicherry  | Pandasozhanallur        | Served by School Cluster Kitchen | NO                    | NO              | NO                  |

## Fifth Joint Review Mission - Mid Day Meal Puducherry

|    |              |                                  |                                  |     |     |    |
|----|--------------|----------------------------------|----------------------------------|-----|-----|----|
| 27 | Pondy cherry | GPS Kirumampakkam                | Served by School Cluster Kitchen | NO  | NO  | NO |
| 28 | Karikal      | GGHS T.R. Pattinam               | Served by Centralized kitchen    | NO  | NO  | NO |
| 29 | Karikal      | Bharathidasan Govt Middle School | Served by school canteenkitchen  | Yes | Yes | NO |
| 30 | Karikal      | Hussaaina GHS Neravi school      | Served by school canteenkitchen  | NO  | NO  | NO |
| 31 | Karikal      | GPS POOVAM                       | School Cluster Kitchen           | NO  | no  | NO |
| 32 | Karikal      | GPS Rayanpalayan                 | SchoolKitchen                    | NO  | no  | NO |
| 33 | Karikal      | GPS Varichikudy                  | School Cluster Kitchen           | NO  | no  | NO |

|      |               | <b>Coverage under School Health Programme</b> |                    |                                 |                                  |
|------|---------------|---|--------------------|---------------------------------|----------------------------------|
|      |               | <b>Annexure- 5</b>                            |                    |                                 |                                  |
| S.No | District Name | Name of School                                | Coverage under SHP |                                 |                                  |
|      |               |   | Health Check up    | Distribution of micro nutrients | Health card available in school* |
| 1    | Pondy cherry  | GPS Chettipet Zone-5                          | YES                | YES                             | YES                              |
| 2    | Pondy cherry  | GHS Thirukknaur                               | YES                | YES                             | YES                              |
| 3    | Pondy cherry  | GPS Koonichempet                              | YES                | YES                             | YES                              |



## Fifth Joint Review Mission - Mid Day Meal Puducherry

|    |              |  |     |     |     |
|----|--------------|--|-----|-----|-----|
| 4  | Pondyicherry | GHS Manalipet  | YES | YES | NO  |
| 5  | Pondyicherry | GPS Mutharapapayam                                   | YES | YES | YES |
| 6  | Pondyicherry | GHS Mutharapalayam                                   | YES | YES | YES |
| 7  | Pondyicherry | GPS Indira Nagar                                     | YES | YES | YES |
| 8  | Pondyicherry | CRN GHS Lawspet                                      | YES | YES | YES |
| 9  | Pondyicherry | GHS Pillayarkuppam (V)                               | YES | YES | YES |
| 10 | Pondyicherry | Govt Smart Primary School                            | YES | YES | YES |
| 11 | Pondyicherry | IMM Heart of Mary's Govt aided school,Reddiarpalayam | YES | YES | YES |

*Contd.*

| S.No | District Name | Name of School                                    | Coverage under SHP |                                 |                                  |
|------|---------------|---|--------------------|---------------------------------|----------------------------------|
|      |               |   | Health Check up    | Distribution of micro nutrients | Health card available in school* |
| 12   | Pondyicherry  | GPS Thattanchavady(V)                             | YES                | YES                             | YES                              |
| 13   | Pondyicherry  | IMM Heart of Mary's Govt aided school, (Villinur) | YES                | YES                             | YES                              |
| 14   | Pondyicherry  | Govt Girls Middle School Villianur                | YES                | YES                             | YES                              |

## Fifth Joint Review Mission - Mid Day Meal Puducherry

|    |              |                     |     |     |     |
|----|--------------|---------------------|-----|-----|-----|
| 15 | Pondyicherry | GPS Vadhanur        | YES | YES | YES |
| 16 | Pondyicherry | GPS Andiarpalayam   | YES | YES | YES |
| 17 | Pondyicherry | GHS Thirubuvanai    | YES | YES | YES |
| 18 | Pondyicherry | GPS Kuppam          | YES | YES | NO  |
| 19 | Pondyicherry | GHS Panditdurasamy  | YES | YES | YES |
| 20 | Pondyicherry | GGHS Vallalar       | YES | YES | YES |
| 21 | Pondyicherry | GPS Muthialpet      | YES | YES | YES |
| 22 | Pondyicherry | GHS Keezhparkkalpet | YES | YES | YES |

**Contd.**

| S.No | District Name | Name of School                   | Coverage under SHP |                                 |                                  |
|------|---------------|----------------------------------|--------------------|---------------------------------|----------------------------------|
|      |               |                                  | Health Check up    | Distribution of micro nutrients | Health card available in school* |
| 23   | Pondyicherry  | GPS Karayambuthur                | YES                | YES                             | YES                              |
| 24   | Pondyicherry  | GPS Irulansandai zone11          | YES                | YES                             | YES                              |
| 25   | Pondyicherry  | Pandasozhanallur                 | YES                | YES                             | YES                              |
| 26   | Pondyicherry  | GPS Kirumampakkam                | YES                | YES                             | YES                              |
| 27   | Pondyicherry  | GPS Thondamanatham Zone-5        | YES                | YES                             | YES                              |
| 28   | Karaikal      | GGHS T.R. Pattinam               | YES                | YES                             | YES                              |
| 29   | Karaikal      | Bharathidasan Govt Middle School | YES                | YES                             | YES                              |

**Fifth Joint Review Mission - Mid Day Meal Puducherry**

---

|    |          |                             |     |     |     |
|----|----------|-----------------------------|-----|-----|-----|
| 30 | Karaikal | Hussaaina GHS Neravi school | YES | YES | YES |
| 31 | Karaikal | GPS POOVAM                  | YES | YES | YES |
| 32 | Karaikal | GPS Rayanpalayan            | YES | YES | YES |
| 33 | Karaikal | GPS Varichikudy             | YES | YES | YES |

**Annexure-6**

**Annual Report of Data Entry as on 10.12.2013 Time\_10:55**

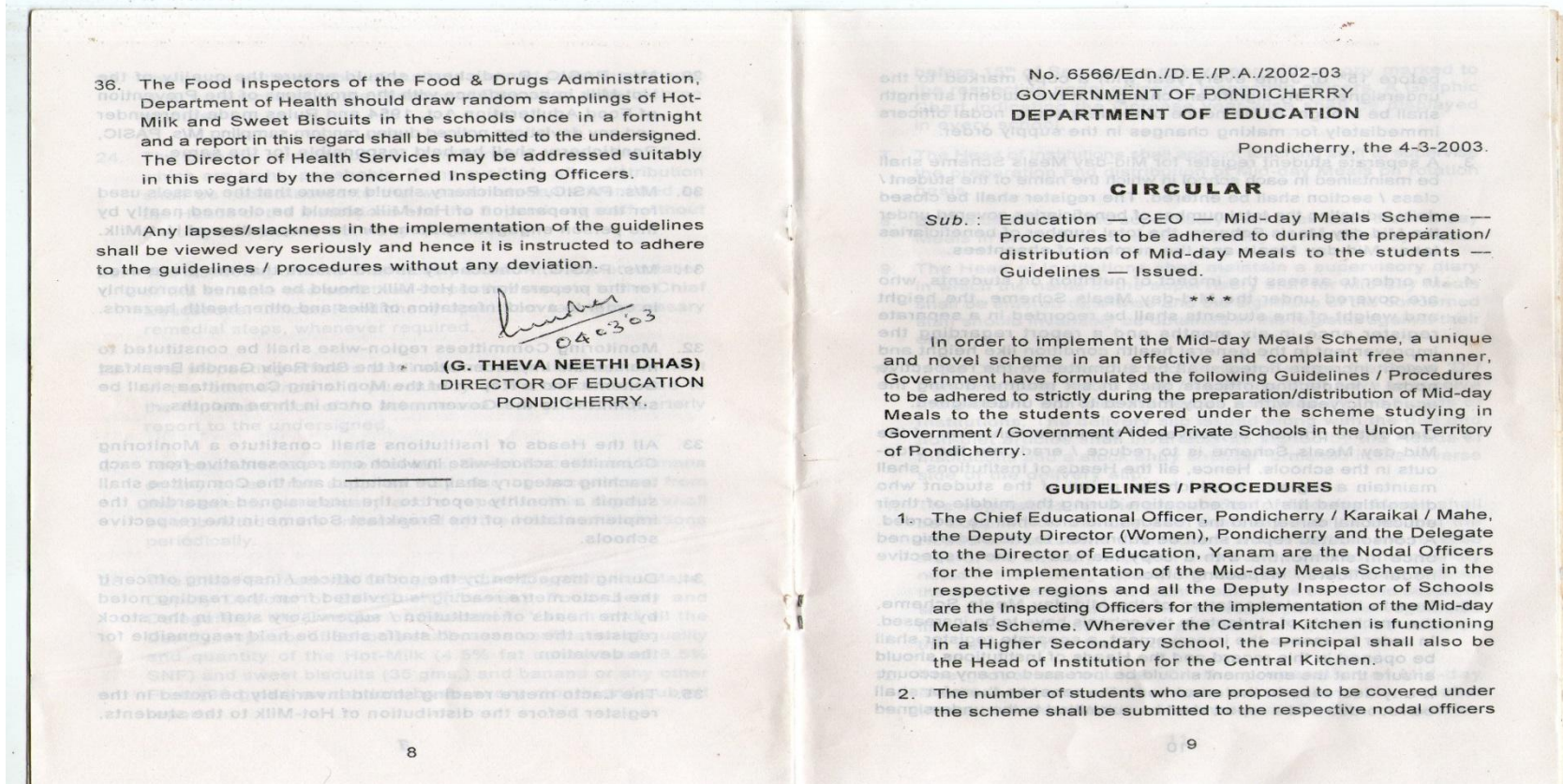
| S. No. | District    | Total Schools | Completed(Saved) | Pending | % Completed |
|--------|-------------|---------------|------------------|---------|-------------|
| 1      | KARAIKAL    | 110           | 110              | 0       | 100%        |
| 2      | MAHE        | 18            | 18               | 0       | 100%        |
| 3      | PONDICHERRY | 301           | 301              | 0       | 100%        |
| 4      | YANAM       | 24            | 24               | 0       | 100%        |
|        | Total       | 453           | 453              | 0       |             |

**Annexure-7**

**Monthly Report of Data Entry as on 10.12.2013 Time\_10:59**

| S. No. | District    | April | May  | June | July | August | September | October | November | December |
|--------|-------------|-------|------|------|------|--------|-----------|---------|----------|----------|
| 1      | KARAIKAL    | 100%  | 100% | 100% | 100% | 100%   | 57%       | 43%     | 0%       | 0%       |
| 2      | MAHE        | 100%  | 100% | 100% | 100% | 100%   | 89%       | 0%      | 0%       | 0%       |
| 3      | PONDICHERRY | 100%  | 100% | 100% | 95%  | 95%    | 52%       | 30%     | 0%       | 0%       |
| 4      | YANAM       | 100%  | 100% | 100% | 100% | 100%   | 88%       | 75%     | 0%       | 0%       |

Guidelines regarding implementation of MDMS in Govt. of Puducherry



## Fifth Joint Review Mission - Mid Day Meal Puducherry

before 15<sup>th</sup> of June every year with a copy marked to the undersigned. Any significant changes in the student strength shall be brought to the notice of the respective nodal officers immediately for making changes in the supply order.

3. A separate student register for Mid-day Meals Scheme shall be maintained in each school in which the name of the student / class / section shall be entered. The register shall be closed daily indicating the total number of beneficiaries covered under the Mid-day Meals Scheme, the total number of beneficiaries taken Mid-day Meals and the number of absentees.
4. In order to assess the impact of nutrition on students, who are covered under the Mid-day Meals Scheme, the height and weight of the students shall be recorded in a separate register once in six months and a report regarding the improvement in the general health condition like height and weight increase noted shall be submitted to the respective nodal / inspecting officers once in six months during the academic year with a copy marked to the undersigned.
5. One of the primary objectives of the implementation of the Mid-day Meals Scheme is to reduce / eradicate the drop-outs in the schools. Hence, all the Heads of Institutions shall maintain a register in which the name of the student who discontinued his / her education during the middle of their educational career and the reasons therefor shall be recorded. A consolidated report shall be submitted to the undersigned once in six months with a copy marked to the respective nodal officers / inspecting officers.
6. Due to the implementation of the Mid-day Meals Scheme, the enrolments of students in the schools have to be increased. In order to assess the improvement, a separate register shall be opened in this regard and the Heads of Institutions should ensure that the enrolment should be increased on any account. If any decrease in the enrolment, the reasons therefor shall be recorded and a report shall be submitted to the undersigned

before 15<sup>th</sup> of September every year with a copy marked to the respective nodal officers / inspecting officers. A Graphic Chart indicating the increase year-wise shall be displayed in every school.

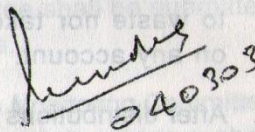
7. The Head of Institutions shall appoint teaching staff to supervise the preparation and distribution of Mid-day Meals on rotation basis.
8. Before distribution the supervisory staff shall taste the Mid-day Meals in order to ascertain the quality of the Mid-day Meals.
9. The Head of Institutions shall maintain a supervisory diary in which the name of the supervisory staff for Mid-day Meals shall be entered date-wise and the signature of the concerned staff should invariably be obtained in the register against their entry.
10. In the Central Kitchen / School Canteen Centres, the Group 'D' / Part-time/Daily Rated Staff / Teaching Staff have to receive the diet and non-diet articles as assigned by the Heads of Institutions. The delivery slip issued along with the diet and non-diet articles shall invariably be signed by the Heads of Institutions and a stock entry shall be furnished in the reverse side of the delivery slip.
11. The vegetables for the preparation of Mid-day Meals shall be supplied on Monday and Thursday every week and the Heads of Institutions shall submit a certificate in the reverse side of the delivery slip that they have received the quantity noted in the delivery slip and the stock entry certificate. Without the above certificates, the claim made by the concerned suppliers shall not be entertained. The immediate perishable vegetables like tomato, ladies finger and keerai etc., shall be used on the same day or the next day.
12. The groceries required for the preparation of Mid-day Meals shall be supplied once in two months by the supplier in accordance with the indent issued by the respective

## Fifth Joint Review Mission - Mid Day Meal Puducherry

- nodal officers. The Heads of Institutions of the Central Kitchen / School Canteen Centres shall give a stock entry certificate in the reverse side of the delivery slip issued along with the grocery items. Without the stock entry certificate, the claim made by the concerned supplier shall not be entertained.
13. The free rice / open market rice shall be supplied monthly / once in two months respectively to the Central Kitchen / School Canteen Centres. The stock entry certificate shall be furnished by the heads of institutions in the reverse side of the delivery slip. Without which the claim to be made by the concerned supplier shall not be entertained.
  14. The fire-wood shall be supplied once in two months as per the indent submitted by the nodal officers. The Heads of Institutions of the School Canteen Centres shall furnish a certificate stating that the quantity noted in the delivery slip is received along with the stock entry certificate without which the claim to be made by the supplier shall not be entertained.
  15. Separate stock register shall be maintained for open market rice, free rice, vegetables, groceries, fire-wood, diesel and the non-diet articles and the stock register shall be closed monthly.
  16. Monitoring Committees region-wise shall be constituted to monitor the implementation of the Mid-day Meals Scheme and a Report of the Monitoring Committee shall be submitted to the Government once in six months.
  17. The heads of institutions shall constitute a Monitoring Committee school-wise in which one teacher from each category shall be included and the Committee shall submit a monthly report regarding the implementation of the Mid-day Meals Scheme in the respective schools to the undersigned.
  18. A minutes book shall be maintained for recording the proceedings of the Monitoring Committee in every school.
  19. The indent for lifting the diesel from the Government Automobile Workshop has to be countersigned by the respective Deputy Inspector of Schools in order to watch over the consumption of diesel in the Central Kitchens and a stock entry certificate in the reverse of the indent copy has also to be countersigned by the respective Deputy Inspector of Schools to settle the diesel claim to the Government Automobile Workshop, Pondicherry, Karaikal and Yanam.
  20. The Mid-day Meals shall be prepared in accordance with the approved diet scales. Any deviation shall be viewed seriously.
  21. Any excess / shortage of diet articles noted during inspection / stock verification shall be construed as misappropriation of diet articles and the Heads of Institutions shall be held responsible for this lapse and necessary action deemed fit shall be taken against them.
  22. Monthly stock position shall be submitted to the respective nodal officers before 5<sup>th</sup> of every month.
  23. The Central Kitchens / School Canteen Centres shall be maintained very cleanly in order to prepare the Mid-day Meals in a healthy and hygienic environment.
  24. The Heads of Institutions / Supervisory Staff shall ensure that the students shall consume the Mid-day Meals in the school premises only and the students should not be allowed neither to waste nor take the meals outside the school premises on any account.
  25. After distributions the Heads of Institutions / Supervisory Staff should ensure that the place should be cleaned thoroughly in order to avoid infestation of flies and other health hazards.
  26. The inspecting officers shall closely monitor the implementation of the scheme and send their inspection reports to the respective nodal officers apart from taking necessary remedial steps, whenever required.

27. The inspecting officer shall also monitor the improvement in the enrolment, decrease / eradication of school drop outs, punctuality of the students in attending the schools and general improvement in the health condition of the students and shall submit a quarterly report to the undersigned.
28. The nodal officers shall cause verification of quality and quantity of the diet items in accordance with the approved diet scales on random basis every month and submit reports.
29. The food inspectors of the Food and Drugs Administration, Department of Health should draw random samples of diet articles from the Central Kitchen / School Canteen Centres once in a month and submit a report to the undersigned. The Director of Health Services may be addressed suitably in this regard by the concerned inspecting officers.
30. The Mid-day Meals from the Central Kitchen to various schools shall be distributed in the stainless steel containers with lock and key. The Heads of Institutions shall not receive the Mid-day Meals without lock and key. They shall take necessary arrangement to procure the locks from the respective inspecting officers.

Any lapses / slackness in the implementation of the guidelines shall be viewed very seriously and hence it is instructed to adhere to the guidelines / procedures without any deviation.

  
240303  
**(G. THEVA NEETHI DHAS)**  
DIRECTOR OF EDUCATION  
PONDICHERRY.

Order regarding constitution of SMC

GOVERNMENT OF PUDUCHERRY  
ABSTRACT

Chief Secretariat(Education)—Constitution of School Management Committee in Government and Government Aided Schools as per the Right to Education Act, 2009 in the Union Territory of Puducherry-Orders-Issued.

CHIEF SECRETARIAT (EDUCATION)

G.O. Ms.No: ~~34~~ Puducherry, dated ~~30~~ /03/2012

READ: (i) This Secretariat's G.O. Ms.No.15, dated 03.02.2003  
(ii) This Secretariat's G.O. Ms.No.124, dated 29.11.2007  
(iii) I.D.Note No.200/SSA/SPD/2011 dated 09.11.2011 from the Director of School Education, Puducherry.

ORDER:

1. The Right of Children to Free and Compulsory Education Act, 2009 (Central Act 35 of 2009) was enacted by the Government of India to provide free and compulsory education to all the children of the age of 6-14 years. The said Act came into force with effect from 1<sup>st</sup> April, 2010.

2. As per sub section (i) of section 21 of the said Act, a school other than an unaided school shall constitute a School Management Committee consisting of the Elected Representatives of the Local Authority, Parents or Guardian of children admitted in such school and Teachers subject to the provisions made there under to perform the functions assigned to it under the Act.


3. The Govt. of Puducherry made necessary rules for carrying out the provisions of the said Act and notified them vide G.O.Ms.No.101 dated 24<sup>th</sup> October, 2011 of the Chief Secretariat (Education).

4. Part-V of the said Rules deals with the composition and functions of School Management Committee and accordingly the Director of School Education has sought for approval of the Government for constitution of such School Management Committee in every school, vide I.D. Note third read above.

5. Now, after careful consideration of the proposal, approval of the Lieutenant Governor is hereby conveyed for the constitution of School Management Committee in every school of this Union Territory as required under sub-section (1) of section 21 of the said Right of Children to Free and Compulsory Education Act, 2009.

6. The composition of each School Management Committee, the procedure for transaction of its business and its functions etc. shall be as indicated in the ANNEXURE-I and II to this order.

7. The Director of School Education shall be the competent authority to constitute the School Management Committee in each school. The Director of School Education may delegate this power to the Inspecting Officers, if need be. School Management Committees shall be constituted immediately and in any case not later than a month from the date of issue of this order. The Director of School Education shall also bring out a comprehensive manual on the role and functions of the School Management Committee in the context of the Right to Education Act, 2009 to facilitate easy understanding by the members of the committee.

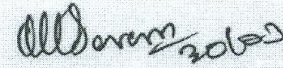
  
2/-



.....2.....

8. The orders issued vide G.O. first and second read above, constituting Village Education Committees/School Level Committees stand superceded and such committees constituted earlier shall cease to exist with immediate effect.

// BY ORDER OF THE LIEUTENANT GOVERNOR //



(M. GUNASEKARAN)

14 UNDER SECRETARY TO GOVERNMENT (EDUCATION)

To  
The Director of School Education, Puducherry.

Copy to:

(1) The Collector, Karaikal (2) The Regional Administrator, Mahe, Yanam (3) The State Project Director, Sarva Shiksha Abhiyan, UT of Puducherry, Mission Authority, Puducherry (4) The Jt. Director (SE), Dte. Of School Education, Pdy (5) The Chief Educational Officer, Puducherry/Karaikal/Mahe (6) The Delegate to Director of School Education, Yanam (7) The Deputy Director (Women), Dte. Of School Education, Pdy (8) The P.S. to Hon'ble Chief Minister, Pdy (9) The Principal Accountant General (Civil Audit), Tamilnadu and Puducherry, Chennai/Puducherry (10) The Sr. Accounts Officer, Dte. Of School Education, Pdy (11) The Central Records Branch, Puducherry.

Circular issued on 24th July 2013 by Govt. of Puducherry regarding tasting of MDM by teachers

புதுச்சேரி அரசு  
பள்ளிக் கல்வி இயக்ககம்

நாள்: 24-07-2013

சுற்றுறிக்கை  
\*\*\*\*\*

கலை, கசாதாரம் மற்றும் சத்துடிக் உணவை மாணவ - மாணவிகளுக்கு வழங்கும் பொருட்டு புதுச்சேரி பல்கலைக்கழகத்தின் உணவியல் துறைப் பேராசிரியர் மற்றும் கசாதாரத்துறை ஆதிக்காரிகளின் கலந்துரையின்பின்னர் அதன் அடிப்படையில் "மைய சமையற்கூடம் மற்றும் பள்ளி சார்ந்த சமையற்கூடங்கள்" முலமாக உணவு தயாரிக்கப்பட்டு மாணவர்களுக்கு வழங்கப்பட்டு வருகிறது.

இதற்காக கட்டப்பட்டுள்ள நவீன சமையற்கூடங்களை மத்தியப் பிரதேசம், அத்தமன் மற்றும் இலட்சத்தீவைச் சேர்ந்த இயக்குனர் மற்றும் பெற்றோர் ஆசிரியர் கூட்டமைப்பின் உறுப்பினர்கள் கூந்த மாதங்களில் பார்வையிட்டு இந்த கட்டமைப்பையும், இங்கு கவைத்தப் பார்த்த கவைப்பான உணவியையும் தங்களின் மாநிலங்களில் செயல்படுத்துவதற்கான வழிகாட்டுதல் மற்றும் கட்டமைப்பின் வரையறை பெற்றுச் சென்றது மிகவும் மகிழ்ச்சி அளிக்கக் கூடியதாக உள்ளது.

அதே சமயத்தில் இவ்வாறு சமைக்கப்பட்ட உணவினை பள்ளிகளில் பரிமாறலின்ற முறை அதற்காகப் பயன்படுத்துவின்ற பாத்நீர்ங்கள் தூய்மை அற்றதாகவும், கசாதாரங்களை விளைவிக்கக் கூடிய நிலையிலும் உள்ளது மிகவும் வேதனை அளிக்கக் கூடியதாக உள்ளது.

சமீபத்தில் அண்டை மாநிலங்களில் மதிய உணவில் மேற்கொண்ட நிகழ்வுகளைக் கருத்தில் கொண்டு ஒவ்வொரு பள்ளியின் முதல்வர், துணை முதல்வர் மற்றும் அனைத்து நிலை தலைமையாசிரியர்கள் மதிய உணவைப் பெற்று மாணவர்களுக்கு பரிமாறும் போது முழு கவனத்தோடு பொறுப்புடன் செயல்பட வேண்டுகிறேன்.

கீழே குறிப்பிட்டுள்ள குறிப்புகளை மாணவர்களின் நலன் கருதி கட்டமை உணர்வோடு செயல்படுத்த வேண்டுகிறேன்.

1. மைய சமையற்கூடத்தில் இருந்து பெறப்படும் உணவை வைக்கும் பள்ளிப் பாத்நீர்ங்கள் சுத்தமானதாகவும், கசாதாரமானதாகவும் உள்ளதா என்பதையும் மாணவர்கள் அமர்ந்து சாப்பிடும் இடங்கள் சுத்தமானதாக உள்ளதா என்பதையும் மேற்பார்வை ஆசிரியர்கள் உறுதி செய்து கொள்ள வேண்டும். ஒரே பாத்நீர்த்தில் பல மாணவர்கள் சேர்ந்து உண்பதை தவிர்த்த வேண்டும்.
2. மதிய உணவு வழங்கும் முன் - மேற்பார்வையிடும் ஆசிரியர்கள் உணவை கவைத்தப் பின்பு மாணவர்களுக்கு வழங்க வேண்டும்.
3. மைய சமையற்கூடத்திலிருந்து பெறப்படும் மதிய உணவு குறைபாடு உள்ளதாகவோ, குறைவான அளவிலோ இருந்தால் உடனடியாக முதன்மைக் கல்வி ஆதிக்காரி அவர்களைத் தொடர்பு கொண்டு தெரிவிக்க வேண்டும். முதன்மைக் கல்வி ஆதிக்காரியின் அலுவலக தொ.பி.எண் -04132207208 முதன்மைக் கல்வி ஆதிக்காரியின் கைப்பேசி எண் - 9443500030
4. பள்ளி மாணவர்களுக்கு வழங்கப்படுகின்ற மத்திய உணவை கவைத்துப் பார்த்து தரத்தை உறுதி செய்ய பள்ளி மேலாண்மைக் குழு மற்றும் பெற்றோர் ஆசிரியர் சங்க உறுப்பினர்களுக்கு வாய்ப்பு அளிக்க வேண்டும்.
5. மதிய உணவு மாணவர்களுக்கு வழங்கப்படும் போது ஏற்படுகின்ற விருப்பத்தகாத நிகழ்வுகளுக்கு பள்ளி முதல்வர்கள், துணைமுதல்வர்கள், மற்றும் தலைமை ஆசிரியர்களோ பொறுப்பற்ற வேண்டும். எனவே அனைவரும் இந்த மத்திய உணவு வழங்கும் திட்டம் பள்ளிகளில் சிறப்பாக செயல்பட விதிப்பணர்வோடு செயல்பட வேண்டுகிறேன்.

இவன்,  
(இ. வல்லகண்ணன்)  
பள்ளிக் கல்வித்துறை இயக்குநர்  
புதுச்சேரி

பெறநர்

1. அனைத்து முதல்வர்கள் / தலைமையாசிரியர்கள்.
2. அனைத்து மைய சமையற்கூட பொறுப்பாளர்கள்.

படி பெறநர்

1. இணை இயக்குனர், பள்ளிக் கல்வித்துறை, புதுச்சேரி
2. முதன்மைக் கல்வி அலுவலர், புதுச்சேரி / காரைக்கால்
3. துணை இயக்குனர் (பெண்) கல்வி, புதுச்சேரி
4. பள்ளிக் கல்வி அலுவலர்கள், வட்டம் - I / II / III / IV / V புதுச்சேரி / காரைக்கால்.

**Creation of post for daily rated workers**

GOVERNMENT OF PONDICHERRY  
ABSTRACT

of Secretariat (DP&AR) – Creation of common categories of Daily Rated Posts in the Government Departments – Approval – Conveyed.

DEPARTMENT OF PERSONNEL AND ADMINISTRATIVE REFORMS  
(PERSONNEL WING)

G.O.No. 22

Pondicherry, dt. 13.07.2006

ORDER:

On the eve of Celebration of Golden Jubilee Independence of Pondicherry, the Chief Minister of Pondicherry has announced on the floor of the Assembly in the last session (March 2005 - April 2005) that all the Part-time common categories employees who have completed three years of service as on 30.04.2005 in the part-time posts will be absorbed in the common categories of Daily Rated posts by creating sufficient no. of Daily Rated posts in the Government Departments. As on 30.04.2005, the total no. of Part-time employees who have put in three years of continuous part-time service in the Govt. of Pondicherry works out to 807 in Pondicherry, Karaikal, Mahe and Yanam regions.

Approval of the Lieutenant Governor, Pondicherry is hereby conveyed for creation of 807 Daily Rated Posts in the common categories in the following four regions in various Govt. Departments as detailed in the Annexure to this G.O. for absorption of Part-time employees of common categories who have completed three years of service as on 30.04.2005 with effect from the date of filling up of the posts upto and inclusive of 28.02.2007 or till the necessity therefore ceases whichever is earlier.

| S.No. | Name of the region | No. of posts |
|-------|--------------------|--------------|
| 1.    | Pondicherry        | 544          |
| 2.    | Karaikal           | 128          |
| 3.    | Mahe               | 58           |
| 4.    | Yanam              | 77           |
| Total |                    | 807          |

The Daily Rated posts sanctioned / created will carry the wages as admissible under rules in force from time to time. The expenditure is debitable to the relevant Head of Account of the concerned Departments in which the wages for Part-time employees are claimed.

This issues with the concurrence of Finance Department vide their L.D.No. 54139/2006/F3, dt. 13.07.2006.

// BY ORDER OF THE LIEUTENANT GOVERNOR

*(D. Dayanidhi)*  
13.7.2006  
(D. DAYANIDHI)  
UNDER SECRETARY TO GOVERNMENT

To  
All the Heads of Departments / Offices concerned.

Copy to:  
1. The Collector, Karaikal.  
2. The Regional Administrator, Mahe / Yanam.  
3. The Accountant General (Audit) Tamilnadu, Chennai / Pondicherry  
4. The Central Record Branch, Pondicherry  
5. G.O. file.

Fifth Joint Review Mission - Mid Day Meal Puducherry

| Sl.No. | Name of the Dept.                | Pondy | Karaikal | Mahé | Yanam | Total |
|--------|----------------------------------|-------|----------|------|-------|-------|
| 1      | Accounts & Treasuries            | 5     | 3        | 2    | 2     | 12    |
| 2      | Adi Dravidar Welfare Department  |       | 5        |      | 2     | 7     |
| 3      | Agriculture Department           | 25    | 8        | 4    | 5     | 42    |
| 4      | Art & Culture                    | 1     |          |      | 2     | 3     |
| 5      | Assembly Department              | 50    |          |      |       | 50    |
| 6      | Block Development Office         |       |          | 1    | 2     | 3     |
| 7      | Civil Supplies & C.A.            | 3     |          |      |       | 3     |
| 8      | Commercial Taxes                 | 4     | 2        | 2    |       | 8     |
| 9      | Co-operative Department          |       | 2        | 1    |       | 3     |
| 10     | Dist. Industrial Centre          | 1     | 2        | 1    |       | 4     |
| 11     | Economics & Statistics           | 2     | 1        |      |       | 3     |
| 12     | Education (Collegeate Education) | 31    | 4        | 2    | 2     | 39    |
| 13     | Education (School Education)     | 331   | 72       | 31   | 45    | 479   |
| 14     | Electricity Department           |       | 5        | 2    |       | 7     |
| 15     | Fire Service                     | 6     |          | 1    | 1     | 8     |
| 16     | Fisheries & Fishermen Welfare    | 7     | 3        | 1    | 2     | 13    |
| 17     | Forest Department                | 1     |          |      |       | 1     |
| 18     | Govt. Automobile Workshop        | 2     | 1        |      |       | 3     |
| 19     | Hindu Religious Institution      | 1     |          |      |       | 1     |
| 20     | Industries & Commerce            | 4     |          |      |       | 4     |
| 21     | Information & Publicity Dept     | 3     |          |      |       | 3     |
| 22     | Jail Department                  |       |          |      | 1     | 1     |
| 23     | Labour Department                | 14    | 4        | 3    | 3     | 24    |
| 24     | Local Administration Department  | 1     |          |      | 1     | 2     |
| 25     | Planing & Reserch Department     |       | 1        |      |       | 1     |
| 26     | Police Department                |       |          |      | 2     | 2     |
| 27     | Public Wroks Department          | 7     | 10       | 3    | 2     | 22    |
| 28     | Regional Administrative Office   |       | 2        | 2    | 2     | 6     |
| 29     | Revenue Department               | 6     | 3        | 1    | 2     | 12    |
| 30     | Social Welfare Department        | 30    |          |      |       | 30    |
| 31     | Survey and Land Records          | 2     |          |      |       | 2     |
| 32     | Town & Country Planning          | 2     |          |      |       | 2     |
| 33     | Transport Department             | 5     |          |      |       | 5     |
| 34     | Women & Child Development        |       |          | 1    | 1     | 2     |
|        | Total                            | 544   | 128      | 58   | 77    | 807   |

(D. DAYANIDHI)  
UNDER SECRETARY TO GOVERNMENT

Fifth Joint Review Mission - Mid Day Meal Puducherry

---

**Annexure - 12**

**List of Schools Visited**

**N=20**

| S.No                          | Name of the School                                   |
|-------------------------------|--|
| <b>District: Pondy cherry</b> |  |
| 1                             | GPS Mutharapapayam                                   |
| 2                             | GPS Indira Nagar                                     |
| 3                             | CRN GHS Lawspet                                      |
| 4                             | IMM Heart of Mary's Govt aided school,Reddiarpalayam |
| 5                             | IMM Heart of Mary's Govt aided school, (Villinur)    |
| 6                             | Govt Girls Middle School Villianur                   |
| 7                             | GPS Thondamanatham Zone-5                            |
| 8                             | GGHS Vallalar  |
| 9                             | GHS Keezhparkkalpet                                  |
| 10                            | GPS Karayambuthur                                    |
| 11                            | GPS Kirumampakkam                                    |
| 12                            | GPS Muthialpet                                       |
| 13                            | GMS Pandasozhanallur                                 |
| 14                            | GHS Panditdurasamy                                   |
| <b>District: Karaikal</b>     |  |
| 15                            | GGHS T.R. Pattinam                                   |
| 16                            | Bharathidasan Govt Middle School                     |
| 17                            | Hussaaina GHS Neravi school                          |
| 18                            | GPS Poovam   |
| 19                            | GPS Rayampalayan                                     |
| 20                            | GPS Varichikudy                                      |

**Proforma for Clinical Assessment**

**Name of the child:**

**Class:**

**Name of the School :**

|    |  |
|----|--|
| I  | <b>Healthy and free from any deficiency symptoms</b>   |
|    | a. Poor musculature  |
|    | b. Deficient subcutaneous fat  |
|    | c. Mild anaemia  |
|    | d. Lack of interest in surroundings  |
|    | e. Mild signs of not more than one of the specific nutritional disorders or deficiencies mentioned under (3) of II |
| II | 1. a. Nutritional oedema   |
|    | b. Gross muscular wasting  |
|    | c. Marked anaemia  |
|    | d. Xerosis of the cornea   |
|    | 2. a. Tenderness of the calf   |
|    | b. Red and / or Raw tongue / Glazed tongue   |
|    | c. Angular stomatitis  |
|    | d. Bleeding gums   |
|    | e. Angular conjunctiva   |
|    | 3. a. Xerosis of pigmentation of conjunctiva   |
|    | b. Bitot's spots   |
|    | c. Caries  |
|    | d. Dry / or rough skin   |
|    | e. Crazy pavement skin   |
|    | f. Hyperkeratosis  |

Special Remarks:

Date:

Signature of the Examiner

**Annexure-14**

## **Recommended Recipes for Mid-Day Meal**

### **1. VEGETABLE PULAV**

#### **INGREDIENTS:**

|                  |          |
|------------------|----------|
| Rice             | 100g     |
| Carrot           | 30g      |
| Beans            | 20g      |
| Cabbage          | 10g      |
| Tomato           | 10g      |
| Onion            | 20g      |
| Coriander leaves | 2g       |
| Mint leaves      | 5g       |
| Green chillies   | 2no      |
| Garlic           | 10g      |
| Ginger           | 10g      |
| Cinnamon         | A piece  |
| Cloves           | 2 no     |
| Oil              | 10g      |
| Salt             | To taste |

**METHOD:**

- Clean and cut all the vegetables
- Soak rice for half an hour
- Make a paste of ginger, garlic, cinnamon and cloves
- Heat oil in a vessel, fry onion, chillies, coriander leaves, mint leaves and tomato.
- Add the paste and fry, then pour water add salt and boil
- Add the rice and cook
- Serve hot

**2. CHANNA PULAV**

**INGREDIENTS:**

|                  |          |
|------------------|----------|
| Rice             | 100g     |
| Channa           | 30g      |
| Tomato           | 10g      |
| Onion            | 20g      |
| Coriander leaves | 2g       |
| Mint leaves      | 5g       |
| Green chillies   | 2no      |
| Garlic           | 10g      |
| Ginger           | 10g      |
| Cinnamon         | A piece  |
| Cloves           | 2 no     |
| Oil              | 10g      |
| Salt             | To taste |



**METHOD:**

- Clean and soak channa for five hours
- Cut onion and chillies
- Soak rice for half an hour
- Make a paste of ginger, garlic, cinnamon and cloves
- Heat oil in a vessel, fry onion, chillies, coriander leaves, mint leaves and tomato.
- Add the paste and fry, then pour water add salt and boil
- Add the rice and cooked channa and mix and cook
- Serve hot

**3 - JEERA RICE AND VEGETABLE KURUMA**

**INGREDIENTS:**

|                  |         |
|------------------|---------|
| Rice             | 100g    |
| Onion            | 20g     |
| Coriander leaves | 2g      |
| Mint leaves      | 5g      |
| Cumin seeds      | 3g      |
| Green chillies   | 2no     |
| Garlic           | 10g     |
| Ginger           | 10g     |
| Cinnamon         | A piece |
| Cloves           | 2 no    |
| Oil              | 10g     |

|      |          |
|------|----------|
| Salt | To taste |
|------|----------|

**METHOD:**

- Soak rice for half an hour
- Make a paste of ginger, garlic, cinnamon and cloves
- Heat oil in a vessel, fry onion, chillies, coriander leaves, mint leaves and cumin seeds
- Add the paste and fry, then pour water add salt and boil
- Add the rice and cook
- Serve hot

**3 - VEGETABLE KURUMA: INGREDIENTS:**

|         |     |
|---------|-----|
| Carrot  | 30g |
| Beans   | 20g |
| Cabbage | 10g |
| Tomato  | 10g |

|                  |          |
|------------------|----------|
| Onion            | 20g      |
| Coriander leaves | 2g       |
| Curry leaves     | 5g       |
| Coconu           | 20g      |
| Green chillies   | 2no      |
| Garlic           | 10g      |
| Ginger           | 10g      |
| Cinnamon         | A piece  |
| Cloves           | 2 no     |
| Oil              | 10g      |
| Salt             | To taste |

**METHOD:**

- Clean and cut all the vegetables
- Make a paste of ginger, garlic, coconut, cinnamon and cloves
- Heat oil in a vessel, fry onion, chillies, coriander leaves, Curry leaves and tomato.
- Add vegetables, salt and cook along with the coconut paste

**4 - MINT RICE**

**INGREDIENTS:**

|                  |          |
|------------------|----------|
| Rice             | 100g     |
| Onion            | 20g      |
| Coriander leaves | 2g       |
| Mint leaves      | 10g      |
| Green chillies   | 2no      |
| Garlic           | 10g      |
| Ginger           | 10g      |
| Cinnamon         | A piece  |
| Cloves           | 2 no     |
| Oil              | 10g      |
| Salt             | To taste |

**METHOD:**

- Clean and cut onion and mint leaves
- Make a paste of ginger, garlic, cinnamon, chillies, mint and cloves
- Heat oil in a vessel, fry onion and coriander leaves
- Add the paste and fry, then pour water add salt and boil
- Add the rice and cook
- Serve hot

**5 - TOMATO RICE AND POTATO PORIYAL**

**INGREDIENTS:**

|                  |          |
|------------------|----------|
| Rice             | 100g     |
| Tomato           | 50g      |
| Onion            | 20g      |
| Coriander leaves | 2g       |
| Mint leaves      | 5g       |
| Green chillies   | 2no      |
| Garlic           | 10g      |
| Ginger           | 10g      |
| Cinnamon         | A piece  |
| Cloves           | 2 no     |
| Oil              | 10g      |
| Salt             | To taste |

**METHOD:**

- Clean and cut tomato and onion
- Soak rice for half an hour
- Make a paste of ginger, garlic, cinnamon and cloves
- Heat oil in a vessel, fry onion, chillies, coriander leaves, mint leaves and tomato.
- Add the paste and fry, then pour water add salt and boil
- Add the rice and cook
- Serve hot

**6 - CARROT RICE: INGREDIENTS:**

|                  |          |
|------------------|----------|
| Rice             | 100g     |
| Carrot           | 60g      |
| Onion            | 30g      |
| Coriander leaves | 2g       |
| Curry leaves     | 5g       |
| Green chillies   | 2no      |
| Oil              | 10g      |
| Salt             | To taste |

**METHOD:**

- Clean and grate the carrot and cut the onion
- Heat oil in a vessel, fry onion, chilies, coriander leaves, curry leaves and carrot
- Add cooked rice and mix
- Serve hot

**7 - SAMBAR RICE / BISIBELLA BATH**

**INGREDIENTS:**

|                  |          |
|------------------|----------|
| Rice             | 100g     |
| Carrot           | 30g      |
| Beans            | 20g      |
| Cabbage          | 10g      |
| Tomato           | 10g      |
| Onion            | 20g      |
| Curry leaves     | 2g       |
| Fenu greek       | 2g       |
| Coriander leaves | 2g       |
| Red gram dhal    | 25g      |
| Chili Powder     | 2no      |
| Coriander seed   | 10g      |
| Asafoetida       | A pinch  |
| Oil              | 10g      |
| Salt             | To taste |

**METHOD:**

- Clean and cut all the vegetables
- Soak rice and dhal for half an hour
- Make a powder of coriander seed, fenugreek and asafoetida
- Cook dhal along with rice
- Heat oil in a vessel, fry onion, chilies, coriander leaves, mint leaves and tomato.
- Add the powder and fry, then add salt and cooked rice and dhal
- Mix nicely and serve hot

**8 - DHAL RICE: INGREDIENTS:**

|                  |          |
|------------------|----------|
| Rice             | 100g     |
| Red gram dhal    | 30g      |
| Onion            | 20g      |
| Tomato           | 30g      |
| Coriander leaves | 2g       |
| Curry leaves     | 5g       |
| Green chilies    | 2no      |
| Garlic           | 10g      |
| Ginger           | 10g      |
| Oil              | 10g      |
| Salt             | To taste |



**METHOD:**

- Clean and cut the onion, curry leaves, green chilies, tomato, garlic and ginger
- Soak rice and for half an hour
- Heat the oil in a vessel, fry onion, chilies, coriander leaves, curry leaves, ginger, garlic and tomato.
- Add water and salt put rice along with dhal and cook
- Serve hot

**9 - CHANNA VEGETABLE KARA KULAMBU**

**INGREDIENTS:**

|                      |     |
|----------------------|-----|
| Channa               | 30g |
| Brinjal              | 20g |
| Drumstick            | 20g |
| Pumpkin (yellow)     | 20g |
| Tomato               | 20g |
| Onion                | 20g |
| Curry leaves         | 2g  |
| Fenu greek           | 2g  |
| Coconut              | 10g |
| Coriander leaves     | 2g  |
| Red gram dhal        | 25g |
| Red Chili            | 2no |
| Coriander seed       | 10g |
| Pepper & cumin seeds | 5g  |

|            |          |
|------------|----------|
| Asafoetida | A pinch  |
| Tamarind   | 15g      |
| Oil        | 10g      |
| Salt       | To taste |

**METHOD:**

- Clean and cut all the vegetables
- After roasting coriander seed, fenugreek, red chilies, pepper and cumin seeds and asafoetida and make a powder
- Cook channa along with vegetables
- Heat oil in a vessel, fry onion, coriander leaves and tomato.
- Add the cooked channa and vegetables
- Add the powder and tamarind juice and then add salt and cook
- Serve hot along with rice

**10 - DRUMSTICK LEAVES AND DHAL KULAMBU**

**INGREDIENTS:**

|                  |     |
|------------------|-----|
| Red gram dhal    | 25g |
| Drumstick leaves | 20g |
| Onion            | 20g |
| Curry leaves     | 2g  |
| Garlic           | 5g  |
| Red Chili        | 2no |
| Cumin seeds      | 5g  |

|            |          |
|------------|----------|
| Asafoetida | A pinch  |
| Oil        | 10g      |
| Salt       | To taste |

**METHOD:**

- Clean drumstick leaves and cut onion
- Cook red gram dhal
- Heat oil in a vessel, fry onion, curry leaves, red chillies and add cumin seeds and garlic
- Add the cooked dhal and drumstick leaves and salt
- Cook till the drumstick leaves gets cooked
- Serve hot along with rice