



(MID DAY MEAL SCHEME)



**NATIONAL PROGRAMME OF MID DAY MEAL IN SCHOOLS
(MDMS)**

ANNUAL WORK PLAN AND BUDGET 2011-12

**STATE
UNION TERRITORY OF PUDUCHERRY**

1. INTRODUCTION

1.1 BRIEF HISTORY

State Profile

The name **Pondicherry** which is now renamed Puducherry is the French interpretation of the original name Puducheri meaning "new settlement". Its history perhaps dates back to the Vedic era when it was known as Vedapuri "the seat of knowledge". Pondicherry also had a flourishing maritime history, which has been proved by the excavations at Arikamedu 7kms. to the south of the town. They show that the Romans came here to trade in the first century AD. Pondicherry was also part of Pallava, Chola and Pandiya empires and thereafter it became the part of Vijayanagar empire, followed by Islamic rule.

In 1521, the Portugese were the first Europeans to trade in textiles in Pondicherry. In the 17th century the Dutch and the Danes followed them. The flourishing trade attracted the French to establish a settlement in 1674. The French then began to acquire more territories and enlarged their establishment. The settlements were captured more than once by the other European countries and recaptured by the French. Finally in 1816, the settlements were restored to French.

After almost 300 years of French connection, Pondicherry, Karaikal, Mahe and Yanam merged with the Indian Union in 1954 under a de-facto treaty between the governments of India and France and the De jure merger took place in 1962 through the Seventh Amendment of the Constitution.

Location of the District

The District of Puducherry is located about 160 Kms. south of Chennai on the Coramandal coast. Together with other enclaves of Karaikal (in Puducherry), Mahe (in Kerala) and Yanam (In Andhra Pradesh) the UT of Pondicherry is formed.

The district is a flat country of an average elevation of 15 metres above sea level intersected by the deltaic channels of River Gingee and the Pennaiyar interspersed with lagoons, lakes and tanks. River Gingee crosses the region diagonally from north-west to south-east. Pennaiyar forms the southern border. To the east of Pondicherry district is Bay of Bengal and to the west and the north is Villupuram District of Puducherry.

Structure

The four regions are treated as four separate Revenue Districts. The Union Territory has a Legislative Assembly with 30 members. There are 5 Municipalities and 11 Commune Panchayats (consisting of 379 habitations) in the territory. The Lieutenant Governor is the Chief Administrator of the Union Territory.

Land

The total land area of the Union Territory is just 480 sq. km. Pondicherry and Karaikal regions are bigger having an area of 290 sq. km and 161 sq. km respectively. Third comes Yanam with an area of 20 sq. km and Mahe is the smallest with 9 sq. km area.

Topography of UT of Puducherry

The UT of Puducherry includes four Districts viz. Puducherry, Karaikal, Mahe and Yanam. The district Puducherry is located about 160 kilometres south of Chennai (Puducherry) on the Coramandal coast, Karaikal is located about 160 kilometres for the south of Puducherry near Nagapattinam (Puducherry). Mahe is in Kerala and Yanam is in Andhra Pradesh.

Natural Setting

Puducherry region consists of four geographical zones. The coastal zone comprises of newer and older dunes including saline areas of clay texture. The second zone is made up of Pondicherry plateau and the Thiruvakkarai plateau composed of a geological formation called 'Cuddalore sandstones'. The third zone is made up of transported ferralitic soil. The fourth zone is Valudavur plain which lies between the two plateau. Marshy depressions are also frequently encountered in the plains of this region. The flat alluvial zone occupies the rest of the Pondicherry region.

The flora of Puducherry has remarkable diversity which may be attributed to the diverse soil types comprising the hydro morph soils rich in clay, the halomorphic soils more or less salty, the sand dunes and very dry soils developed on red sand stones.

There is no major forest in the region, which at best contains only scarce, secondary distributed scrub jungle besides open trees and agricultural fields. As such the fauna is limited and not spectacular so far as the larger species of wild life are concerned. There are about 54 species of mammals found in the area. Several species of resident or locally migratory birds are found in the area. In winter months this bird fauna is considerably enriched by the arrival of several more species of migratory birds from the north. The territory has a rich variety of fish fauna in the coastal waters (Bay of Bengal) and also in the numerous ponds, tanks and water courses. About 175 species of fishes are known in the district.

Climate

Puducherry experiences a hot and tropical maritime climate, humid weather and moderate rainfall. There is no clear demarcation of seasons. However the summer may be taken to last from March to June followed by the period of the south-west monsoon which lasts up to September. The months of October and November constitute the main north east monsoon season. There is no real cool weather season, but the period from December to February is relatively cool. The average annual rainfall is 865 millimetres.

Occupation of People

The occupation of the entire population of the District of Puducherry may be divided into two broad categories viz., workers and non-workers. The working population in the District of Puducherry forms to be about 50 percent of the total population.

The working population may be distributed under nine categories on the basis of the census data 2001.

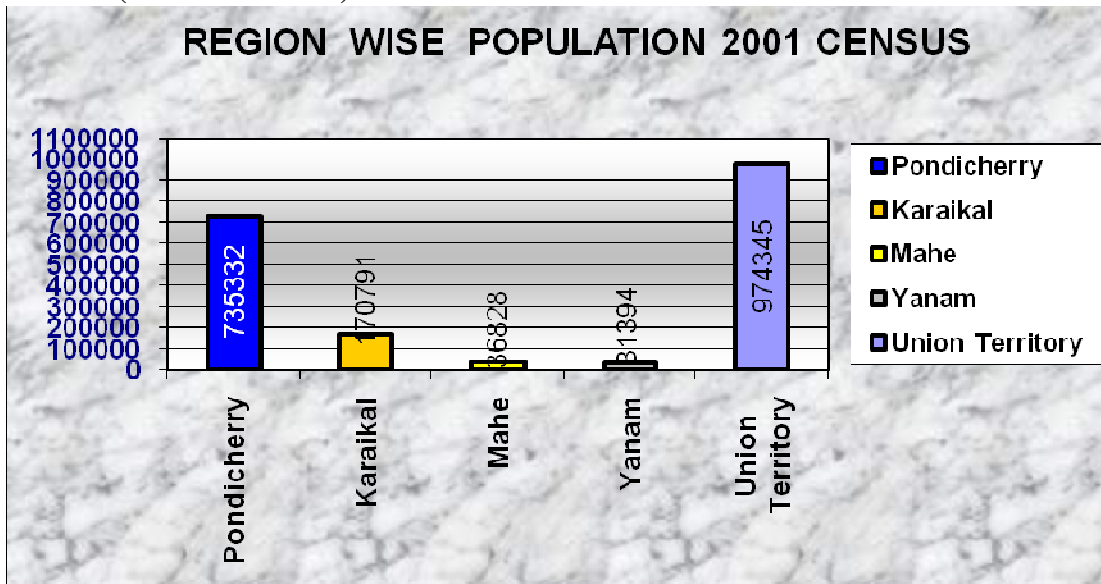
1. Cultivators
2. Agricultural labourers
3. Mining, quarrying, livestock, forestry, fisheries
4. Household industry
5. Manufacturing other than household
6. Construction
7. Trade and Commerce
8. Transport, Storage and Communication
9. Other Services (including State & Central Governments)

The total number of employees working in State Government Offices, Central Government Offices and Municipalities & Commune Panchayats is 26014, 5293 and 2359 respectively as per 2001 census.

Population

The Union Territory has a population of 9,74,345 with 4,86,961 males and 4,87,384 females (2001 Census). The density of the population is 2029 per square km. The population of Scheduled Caste is 1,57,771 (Males: 78,140; Females: 79,631) (2001 Census). There is no Scheduled Tribe population in the Union Territory.

Population (2001 CENSUS)



Projected population as per RGI

Literacy

The Union Territory of Puducherry occupies seventh place in the literacy rate of the country, next to Kerala, Mizoram, Lakshadweep, Goa, Delhi and Chandigarh. The literacy rate for the whole of the Union Territory is 81.24% with 88.62% of males and 73.90% of females being literates (2001 Census). Mahe region has the highest rates of literacy with 95.78% (Females: 94.23%) and the lowest is found in Yanam with 74.16% (Females: 69.07%).

Census of Literacy – Year wise

Year	Literacy Rate		
	Male	Female	Total
1961	58.50	28.69	43.65
1971	66.50	40.14	53.38
1981	74.48	51.71	63.14
1991	83.68	65.63	74.74
2001	88.62	73.90	81.24

Data on Literacy Rates

S. No	Name of the District	Literacy Rate in percentage						Rural Female Literacy rate
		ALL			SC			
		Male	Female	Total	Male	Female	Total	
1	Pondicherry	88.44	72.84	80.64	78.13	59.39	68.65	52.65
2	Karaikal	89.40	74.68	82.04	79.27	60.65	69.83	60.31
3	Mahe	97.64	93.98	95.81	93.85	93.48	93.69	0
4	Yanam	78.82	68.50	73.66	79.4	70.16	74.79	0
Puducherry		88.62	73.90	81.24	78.13	60.0	69.12	54.61

Source: Census 2001

The U.T of Puducherry has strong net work of 692 schools of various categories, catering the educational needs of the children. Out of this 431 schools are run by the state Govt. 5 by the Central Govt. and out of 256 private managed schools, 34 are aided 222 are unaided.

Participation and Enrolment–State Level

The increasing growth in the schooling of students of UT Puducherry in the 21st century shows that more than two lakhs forty three thousand and twenty two children are in schools.

ENROLMENTS AT ALL LEVELS, 2000 - 10

Year	Enrolment of Boys	Enrolment of Girls	Total Enrolment
2000-2001	111332	103617	214949
2001-2002	112426	104932	217358
2002-2003	114375	107617	221992
2003-2004	116187	110182	226369
2004-2005	118479	112735	231214
2005-2006	120277	114817	235094
2006-2007	124189	118833	243022
2007-2008	126288	121047	247335
2008-09	127466	122156	249622
2009-10	129104	124188	253252

Source: DSE, Govt of Puducherry

STATE IMPLEMENTATION STRUCTURE

(Information on State Implementation Model)

The Midday Meal Scheme is being implemented in this Union Territory of Puducherry since the days of French Administration i.e. from the year 1930. Nearly 1.26 lakhs students are covered under the Midday Meal Scheme studying from I to XII standard in 463 Government/Government Aided Private Schools besides Pre-primary children. The Midday Meal Programme is being implemented under Central Assistance as well as under State Plan.

MIDDAY MEAL SCHEME UNDER CENTRAL ASSISTANCE

1.2. PROCESS AND PLAN FORMULATION

In order to give a boost to universalisation of Primary Education by increasing enrolment, retention and attendance and simultaneously impacting of nutrition on students in primary classes, the National Programme for Nutritional Support to Primary Education 2006 was evolved and communicated vide letter No.F.1(9)/2006-Desk(MDM), dated 20.09.2006 by the Ministry of Human Resources Development, Department of Education, Government of India, New Delhi. As per the guidelines, 100 grams of Rice per student per day for primary students and 150 grams of rice per student per day for upper primary students are supplied by Food Corporation of India. In addition, the Government of India has provided assistance for meeting the cooking cost at Rs.2.02 per child per school day for primary students and Rs.3.02 per student per day for upper primary a part from transport subsidy , honorarium for cook cum helpers and MME for the year 2010-11.

MIDDAY MEAL SCHEME UNDER STATE PLAN

The Midday Meal Scheme is being implemented under State Plan to cover the students studying from IX to XII standard besides the children of Pre-primary in 463 Government/Government Aided Private Schools.

The midday Meal is being prepared in 13 Central Kitchens equipped with modern cooking range facilities and also in 70 School Canteen Centres and supplied to the students . The midday Meal includes Rice, Sambar/Karakuzhambu with Vegetable Poriyal. In addition, 2 eggs per week are also supplied. Each student is supplied with 130/160 grams of rice and 75 grams of vegetables every day. In addition to doordhall, 12grams of Kadalai / Mocchai is included in the diet scales on vegetable day for all students. In the Union Territory of Puducherry, the Midday Meal is being supplied with adequate calories and protein as detailed below:

Group	Calories	Protein
Standard I–IV on Vegetable day	596	19 grams
Standard I–IV on Egg day	631	23 grams
Standard V–XII on Vegetable day	700	21 grams
Standard V–XII on Egg day	735	25 grams

The midday meal is being provided to the school children for a period of minimum 200/220 days approximately in a year. The diet and non-diet articles in respect of Puducherry, Karaikal, Mahe and Yanam regions are being supplied by M/s. Puducherry Agro Service And Industries Corporation Limited, Puducherry Agro Products Food And Civil Supplies Corporation Limited, Puducherry Central Co-operative Processing Supply and Marketing Society, Karaikal Central Co-operative Processing Supply and Marketing Society and Mahe Employees Co-operative Society and Yanam Co-operative Stores Ltd., respectively. In addition to the above, diet and non-diet articles are being supplied by 37 Self Help Women Groups in Puducherry region to the School Canteen Centres whose feeding strength is less than 600 students.

There is a proposal to construct 2 Kitchens, one at K.T.Kuppam with a feeding strength of 12,000 students and another kitchen at Kuruvinatham with a feeding strength of 8,000 students in the Year 2011-12. There is also a proposal to construct 2 Central Kitchens at Karaikal viz., at Anna Nagar and Sethur. A Mega kitchen at Lawspet, Puducherry has been inaugurated and it is also under operation..

The cost of midday meal per student per day works out to Rs.4.97 per day per student on non-egg day from I to V Excluding the cost the cost of 100 grams of Rice provided under Central Assistance and on egg day it works out to Rs.7.47 per student per day. Similarly the cost of Midday Meals for the students studying from VI to XII std. works out to Rs.4.57 on non-egg day which excluded the cost of 150grams of rice / student and on egg day it works out to Rs.7.07/- per student per day. The remaining amount under cooking cost over and above the Central Assistance is being met by the State Government under the State Plan / Non-Plan sectors. The distribution of mid day meal in school is supervised by teachers and the supervision duty is assigned by the Head of institution on rotation basis without affecting the teaching/learning activities. 316 cooks & 715 Sanitary Assistants are engaged in kitchens and schools respectively towards the implementation of Midday Meals Scheme.

Detailed Guidelines/Procedures to be followed by all the Heads of Institutions for the implementation of the Midday Meal Scheme are issued vide Circular No.6566/Edn/DE/PA/2002-03, dated 04.03.2003 of the Director of School Education, Puducherry for strict compliance.

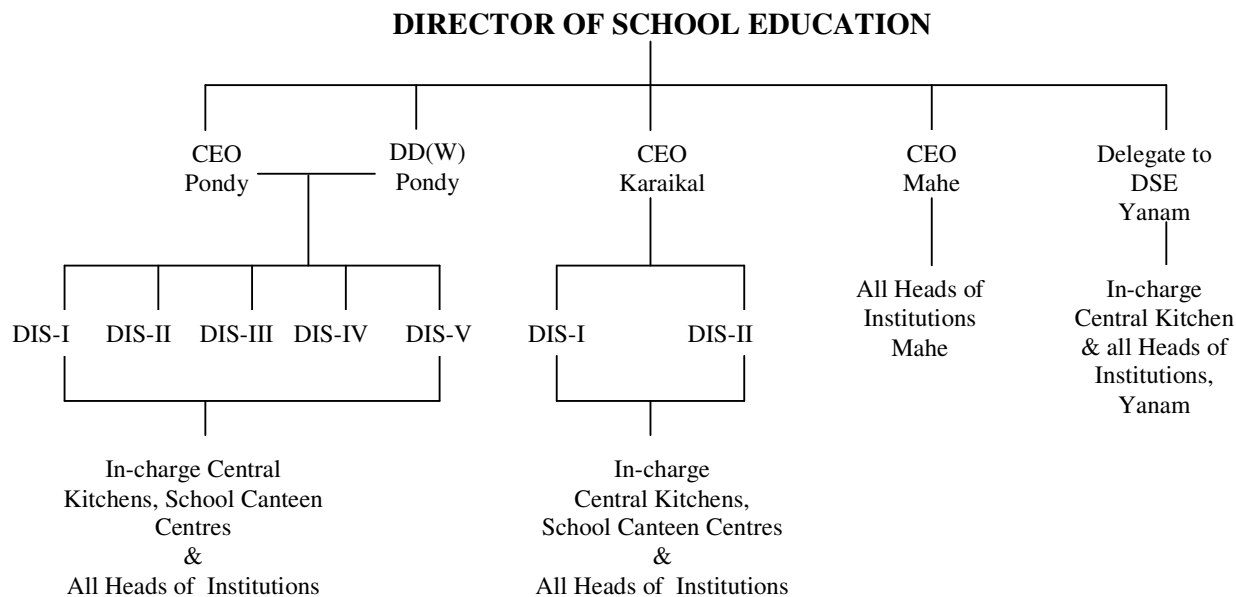
The Chief Educational Officer, Puducherry / Karaikal / Mahe, the Deputy Director (Women), Puducherry and the Delegate to the Director of School Education, Yanam are the Nodal Officers for the implementation of the Midday Meal Scheme in the respective regions and all the Deputy Inspector of schools are the Inspecting Officers for the implementation of the Midday Meal Scheme. Wherever the Central Kitchen is functioning in a Higher Secondary School, the Principal shall also be the Head of Institution for the Central Kitchen.

The per capita expenditure for the implementation of Midday Meal Scheme in this Union Territory of Puducherry is the highest in the whole of India.

VISIT OF PARLIAMENTARY STANDING COMMITTEE TO THE
CENTRAL KITCHEN, KURUSUKUPPAM



MANAGEMENT STRUCTURE FOR IMPLEMENTATION (*ORGANISATIONAL CHART*)



DSE - Director of School Education, CEO- Chief Educational Officer,
DD(W)- Deputy Director (Women), DIS - Deputy Inspector of Schools

The Department of School Education is the implementing Agency for the Midday Meal Scheme in this Union Territory of Puducherry and the scheme is being implemented in an effective and transparent manner through centralized kitchens / School canteen centres. The diet and non-diet articles are being supplied by the Government undertakings / Co-operative institutions to the Central Kitchens. Hence, no separate fund provision is made to the schools due to the centralized procedure adopted in the implementation of the scheme.

The nutritional status of the students covered under Midday Meal Scheme is very good and no case of malnutrition is reported so far. All the students studying in the schools including Government / private are provided with a Health Card and the Student Health Officer from the Department of Health is periodically checking the status of health of all the students and recorded his findings in the Health Card and any remedial action is being taken by the Student Health Officer. The region wise number of primary and upper primary schools are as follows:

Sl. No.	Name of the Region	No. of Primary Schools	No. of Upper Primary	No. of Upper Primary Schools
---------	--------------------	------------------------	----------------------	------------------------------

		(Govt.+Aided)	Schools with Primary classes (Govt.+Aided)	without Primary classes (Govt.+Aided)
1.	Puducherry	159	49	49
2.	Karaikal	67	19	5
3.	Mahe	10	1	2
4.	Yanam	15	2	5
Total		251	71	61

The dropout ratio in Primary Education is reduced to Nil in the Year 2006-07 from 1.97 in the Year 2000-01. Similarly the dropout in Secondary Education is reduced to 3% in the year 2007-08. The Union Territory of Puducherry has retained its first rank in the Composite Educational Development Index (EDI) for both Primary and Upper Primary for the year 2008-09 also. Gender Parity Index in Enrollment is 0.98 in the year 2007-08 and whereas it is 0.93 in the National level. Gender Parity Index in Enrollment for Upper Primary is 0.96 in the year 2007-08 and whereas it is 0.89 in the National level.

L.P.GAS BASED BOILERS IN THE CENTRAL KITCHEN, SHANMUGAPURAM



PREPARATION OF MEALS IN THE KITCHEN – L.P.GAS BASED



VEGETABLE CUTTING



VEGETABLE MACHINE CUTTING





2. Description and assessment of the programme implemented in the current year (2010-11) and proposal for next year (2011-12):

2.1: REGULARITY AND WHOLESOMENESS OF MID DAY MEALS SERVED TO CHILDREN

The Midday Meal Scheme is being implemented in the Union Territory of Puducherry in accordance with the approved diet scales prescribed by the Government. It is ensured that the children is getting the meals with adequate caloric value and without any interruptions. The diet scales is as follows:

Sl. No.	Item	Class	Quantity
1	Rice	I to IV Std	Not exceeding 130 gms. per student/day
2	Rice	V to XII Std	Not exceeding 160 gms. per student/day
3	Oil	I to XII Std	5/7.5 gms. per student/day
4	Masala Chilly Powder	I to XII Std.	2.5 gms. per student/day
5	Toor Dhall	I to XII Std.	10 gms. per student/day
6	Kadalai (Bengal gram, whole)/ Mocchai	I to XII Std.	12 gms. per student/non-egg day
7	Egg	I to XII Std.	2 Eggs per week (weighing 50 gms. each)
8	Tamarind	I to XII Std.	2 gms. per student/day 3 gms. per student/day on Karakuzhambu day
9	Dry Chilly	I to XII Std.	0.5 gms. per student/day
10	White Gram Dhall	I to XII Std.	0.25 gms. per student/day
11	Mustard	I to XII Std.	0.25 gms. per student/day
12	Turmeric Powder	I to XII Std.	0.10 gms. per student/day
13	Garlic	I to XII Std.	3 gms. per student/day on Karakuzhambu day
14	Onion Vadagam	I to XII Std.	0.25 gms. per student/day on Karakuzhambu day
15	Salt (Double fortified)	I to XII Std.	3 gms. per student/day
16	Vegetables	I to XII Std.	75 gms. per student/day

The nutritional value of the midday meal in Puducherry is as follows;

Group	Calories	Protein
Standard I–IV on Vegetable day	596	19 grams
Standard I–IV on Egg day	631	23 grams
Standard V–XII on Vegetable day	700	21 grams
Standard V–XII on Egg day	735	25 grams

The daily menu includes Rice, Sambar and Vegetable Poriyal besides boiled egg weekly twice. Fresh vegetables of all kinds are being used for the preparation of Sambar and Vegetable Poriyal. In order to avoid interruptions if any, the diet articles are being procured from the co-operative institutions / govt. undertakings only and there is no role for private traders.

The midday meal is being prepared in modernized Central Kitchens besides school canteen centres as per the diet scales prescribed above which is wholesome in all aspects. The concept of cooking the Midday Meal in modern Central kitchens is being followed in Puducherry and the present school canteen centres numbering 92 will be closed in a phased manner after the construction / activation of six more central kitchens. Due to the preparation of Midday meals in modern central kitchens, the uniformity in the quality of food is being ensured.

2.2: FOOD GRAINS MANAGEMENT INCLUDING ADEQUACY OF ALLOCATION:

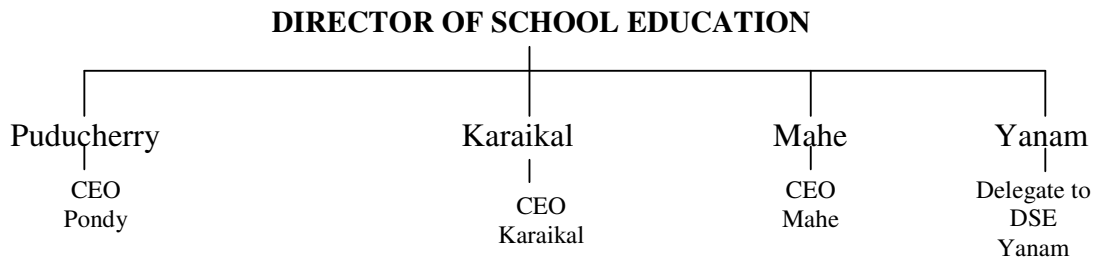
In Puducherry, the Department of School Education is implementing the scheme directly and the meal is being prepared in 13 Central kitchens and 92 school canteen centres. The Chief Educational Officer, Puducherry / Karaikal / Mahe and the delegate to Director of School Education, Yanam are the Nodal officers in the respective regions. The rice allotted by the Government of India under Midday meal scheme is being lifted and distributed to the schools as per the indent issued by the respective Nodal officers.

The lifting of food grains from the FCI is entrusted to the co-operative institutions. The lifting / distribution of rice from the FCI are being carried out by the co-operative institutions in a time bound / error free manner. The rice lifted from FCI is cleaned by the respective lifting agencies before distribution to the central kitchens / school canteen centres since the rice sometimes contained foreign particles such as small stone / sand / nail. In order to avoid complaints, if any, the rice is being cleaned in the rice mill of the respective co-operative institutions before distribution to the canteens. Each central kitchen is having sufficient storage facilities to keep the rice in good condition till its usage.

2.3: SYSTEM FOR RELEASE OF FUNDS PROVIDED UNDER COOKING COST (CENTRAL & STATE):

The Midday Meal Scheme is being implemented directly by the Department of School Education, Puducherry through the Central Kitchens / School Canteen Centres. The diet articles required for the preparation of Midday Meal are being supplied by the Government undertakings / Cooperative Institutions to the Central Kitchens / School Canteen Centres. The payment in this regard is being settled by the respective Nodal Officers in district level and there is no release of funds at school level. The management structure at district level is as follows:

MANAGEMENT STRUCTURE FOR THE SETTLEMENT OF BILLS TOWARDS THE PURCHASE OF DIET ARTICLES



DATE OF RECEIPT / RELEASE OF FUNDS BY THE CENTRE / STATE

Sl. No.	Installment / component	Amount (Rs. in lakhs)	Date of receipt of funds by the State	Date of release of funds by the State	Amount	Remarks
1.	Adhoc grant	184.93	30.04.10	30.04.10	189.97	The State share of Rs.189.97 lakhs was released in the month of April 2010 itself (as per the norms).
2.	Ist installment	191.26	30.08.10			
3.	IInd installment	293.07	08.12.10			
4.	Total	669.26			189.97	

2.4: SYSTEM OF PROCURRING COOKING INGREDIENTS (PULSES / VEGETABLES INCLUDING LEAFY ONES, SALT, CONDIMENTS, OIL AND FUEL ETC):

The diet and non-diet articles in respect of Puducherry, Karaikal, Mahe and Yanam regions are being supplied by M/s. Puducherry Agro Service And Industries Corporation Limited, Puducherry Agro Products Food And Civil Supplies Corporation Limited, Puducherry Central Co-operative Processing Supply and Marketing Society, Karaikal Central Co-operative Processing Supply and Marketing Society and Mahe Employees Co-operative Society and Yanam Co-operative Stores Ltd., respectively on limited tender basis. In addition to the above, diet and non-diet articles are being supplied by 37 Self Help Women Groups in Puducherry region to the School Canteen Centres whose feeding strength is less than 600 students. The supplies are made on monthly basis as per the requirement of the concerned central kitchens / school canteen centres and it is also ensured that adequate quantities of diet articles are kept in the central kitchens. Each central kitchen is equipped with a store room where adequate stock for one month can be stored safely.

It is informed that the Parliamentary Standing Committee attached to the Ministry of Human Resource Development, New Delhi have observed in its 210th Report that the engagement of Co-operative Societies and Self-Help Groups in the preparation and distribution of Midday Meal makes the entire process very transparent. Besides highlighting the management skills of U.T. Administration, it also promotes the cause of co-operative societies and SHGs indirectly. The Committee, therefore, recommends the Department of Human Resource Development, New Delhi to examine the viability of having similar arrangement in other States / UTs and prepare appropriate guidelines in this regard.

2.5: SYSTEM FOR COOKING, SERVING AND SUPERVISING MIDDAY MEAL IN THE SCHOOLS:

The concept of cooking the midday meal in modernized Central Kitchens is being followed in Puducherry and 12 Central Kitchens are functioning at present besides 92 School Canteen Centres. Experienced individuals are manning these Central Kitchens. The school canteen centres are supervised by teachers on rotation basis without affecting their teaching and learning activities. A proposal is sent to Government to create 20 posts of Catering Assistants with the following qualifications initially on Daily Rated / Contract basis to supervise the preparation of food in the central kitchens

Sl.No.	Name of the posts	No. of posts proposed to be created	Qualifications proposed
1.	Catering Assistants	20	i) Certificate course in Food Production (One year) issued by the State Board of Technical Examination (or) National Council for Hotel Management and Catering Technology, Ministry of Tourism, Government of India (or) ii) Diploma in Food Production (18 months) issued by the State Board of Technical Examination (or) National Council for Hotel Management and Catering Technology, Ministry of Tourism, Government of India

The implementation of Midday Meal Scheme in Puducherry is being made in accordance with the guidelines issued in this regard by the Department of School Education which is very exhaustive and includes all aspects. The Nodal officers / Inspecting officers are also visiting the Central kitchens / school canteen centres periodically to ensure error free implementation.

2.6: PROCEDURE FOR GETTING KITCHEN SHED CONSTRUCTED:

The concept of cooking the midday meals in modernized central kitchens with modern kitchen devices is being followed in Puducherry and this ensures uniform quality and preparation of food in a very hygienic manner. This has been appreciated by various other State Governments and Parliamentary Standing Committee attached to the Ministry of Human Resource Development, New Delhi. The relevant portion of the Parliamentary Standing Committee Report is extracted below. The construction of central kitchens is entrusted to the Public Works Department, Government of Puducherry. The Estimate for the construction of kitchen is being prepared only on the Puducherry Schedule of Rates which is approved by the Government. There is no role for private traders / agencies.

“The Committee welcomes these innovative schemes and wishes U.T the very best in its endeavour to provide nutritional support to all school going children in the UT. The Committee would appreciate with the methodology of implementation of MDM scheme initiated by the UT Administration along with various UT level additions is brought before all the States / UTs as a case study by the Department. The Committee firmly believes that quite a few States / UTs to come forward for adoption of innovative measures of UT of Puducherry in their set-ups.”

There are 12 Central Kitchens and 92 School Canteen Centres functioning at present. There is a proposal to construct two more central kitchens at Puducherry region and two central kitchens at Karaikal region and one central kitchen at Mahe region. After construction and activation of these five more proposed kitchens, the school canteen centres functioning at present would be closed in a phased manner.

Hence, it is requested that Central Assistance may kindly be provided for the construction of the Central Kitchen at K.T.Kuppam in Puducherry region and Central Kitchen at Sethur and Kottucherry in Karaikal region as detailed below:

Sl. No.	Name of the Central kitchens	Students Strength	Prescribed plinth area for both kitchen and store	Unit cost	Fund required	Central share 75%	State Share 25%
1.	K.T. Kuppam,	13274	530 Sq. Mts	Rs.23410	124 lakhs	93 lakhs	31 lakhs
2.	Kottucherry	7680	307.2SM	Rs.23410	71.9 lakhs	53.9 lakhs	18 lakhs
3.	Sethoor	5790	231.6 SM	Rs.23410	54.21 lakhs	40.7 lakhs	13.5 lakhs
4.	Total		1068		250.11	187.6	62.5

The Central Assistance as above may please be arranged to be provided to Puducherry for the implementation of Midday Meal Scheme as a special case in view of the unique way of implementation of the scheme. The provision of Rs.55.20 lakhs already made for the construction of school canteen centres is to be utilized for the construction of a central kitchen at Kuruvinatham in Puducherry with a feeding strength of 10,000 students per day.

2.7: PROCEDURE OF PROCUREMENT OF KITCHEN DEVICES:

No central assistance was received for the procurement of kitchen devices for the year 2008-09 and 2009-10. However, kitchen utensils are being procured from the state provision wherever required. There is no shortage of kitchen vessels. It is also proposed to procure transportation vessels for the transportation of cooked meals from the central kitchens to various schools at a cost of Rs.10.00 lakhs for the year 2011-12. Central Assistance is sought for the procurement of kitchen devices also for the year 2011-12.

2.8: CAPACITY BUILDING AND TRAINING:

The Midday Meal Scheme is being implemented in this U.T. of Puducherry in accordance with the Guidelines vide circular No.6566/Edn/DE/PA/2002-03, dated 04.03.2003 of the Director of School Education, Puducherry. Training programme for the staff involved in the preparation / distribution of food will be arranged. However, only experienced and hardworking personnel are posted in the central kitchens to run the kitchens effectively in an error free manner. The in-charge of central kitchens is attending training imparted by the National Nutrition Board whenever such training programmes are notified.

2.9: MANAGEMENT INFORMATION SYSTEM AT SCHOOL, VILLAGE/GRAM PANCHAYAT, BLOCK, DISTRICT AND STATE LEVEL:

In this Union Territory of Puducherry, the Midday Meal Scheme is being implemented directly by the Department of School Education and there is no involvement of other agencies including Village / Gram Panchayat. The scheme is being implemented as per the Guidelines issued in this regard which is very exhaustive. Village Education Committee/ School Level Committee/ School Management and Development Committee are contributed in all schools as per norms of SSA. Distribution of Midday Meals are also supervised by the above committees in the school level.

2.10: SYSTEMS TO ENSURE TRANSPARENCY AND OPENNES:

The Midday Meal Scheme is being implemented in this U.T. of Puducherry in accordance with the Guidelines issued in this regard. In addition, a G.O. is likely to be issued shortly prescribing the procedures to be adopted on the implementation of Midday Meal Scheme in this U.T. of Puducherry, which is very exhaustive and includes necessary mechanism for transparency in all aspects of programme implementation.

The diet and non-diet articles in respect of Puducherry, Karaikal, Mahe and Yanam regions are being supplied by M/s. Puducherry Agro Service And Industries Corporation Limited, Puducherry Agro Products Food And Civil Supplies Corporation Limited, Puducherry Central Co-operative Processing Supply and Marketing Society, Karaikal Central Co-operative Processing Supply and Marketing Society and Mahe Employees Co-operative Society and Yanam Co-operative Stores Ltd., respectively on limited tender basis. In addition to the above, diet and non-diet articles are being supplied by 37 Self Help Women Groups in Puducherry region to the School Canteen Centres whose feeding strength is less than 600 students. As the procurement of all articles are only through co-operative institutions, transparency and openness in all aspects of programme is ensured. The appointment of cooking staff is only through Employment Exchange. The construction of central kitchens is entrusted to the Public Works Department, Government of Puducherry. The Estimate for the construction of kitchen is being prepared only on the Puducherry Schedule of Rates which is approved by the Government. There is no role for private traders / agencies.

2.11: MEASURES TAKEN TO RECTIFY UNEVEN UTILIZATION:

There is no report of uneven utilisation of food grains in any of the four regions in this U.T. of Puducherry. Similarly there is no mismatch of utilisation of foodgrains and cooking cost in Puducherry as far as the year 2009-10 is concerned. As the scheme is being implemented directly by the Department of School Education through central kitchens / school canteen centres, delivering of cooking cost at school level does not arise.

2.12: DETAILS OF EVALUATION STUDIES:

The evaluation of the implementation of Midday Meal Scheme is being undertaken by the School of Management, Pondicherry University and its report is awaited. In addition the Evaluation of the scheme is being undertaken by the Madras Institute of Development Studies, Chennai and its report is also awaited.

2.13: BRIEF WRITE-UP ON BEST PRACTICES:

- The Midday Meal is being prepared in 12 modernized central kitchens besides 92 school canteen centres. Out of 12 central kitchens 2 central kitchens are L.P.Gas based. In addition, 1 mega kitchen with a feeding strength of 20,000 students is under construction which is also L.P.Gas based and the same is likely to be activated in June 2010. It is further stated that 4 more central kitchens 2 at Puducherry and 2 at Karaikal are proposed to be constructed in the year 2010-11. After construction / activation of these kitchens, all the school canteen centres will be closed in a phased manner.
- The diet and non-diet articles are being procured only from the co-operative institutions and Government undertakings on limited tender basis. There is no role for private traders / agencies.
- Egg is provided weekly twice.
- Double fortified salt manufactured by the Tamil Nadu Salt Corporation is included in the diet scales instead of ordinary salt.
- Catering Assistants with qualification in Food Production is to be posted in the central kitchens.
- The height and weight of the students are recorded once in 6 months in a separate register in each school.
- All the students are provided with a Health Card and the Student Health Officer, Department of Health is visiting the schools periodically to examine the students and defects if any noticed they will be referred to the nearest Health Centres for necessary follow-up action.
- The implementation of the scheme is not only to enhance the nutritional status of the students but also ensure social equity in schools.
- Besides Midday Meal Scheme, the Government of Puducherry is implementing Shri Rajiv Gandhi Breakfast Scheme and Shri Rajiv Gandhi Evening Milk Scheme to wipe out classroom hunger and malnutrition.
- Mothers also involve to observe the distribution of Midday Meal in schools

2.14: INSTANCES OF UN-HYGIENIC FOOD SERVED:

No instance of unhygienic food served, children falling ill, substandard supplies, diversion / misuse of resources and social discrimination reported in this U.T. of Puducherry. The scheme is implemented effectively in an error free manner and in accordance with the Guidelines prescribed in this regard.

2.15: EXTENT OF INVOLVEMENT OF NGOS:

The Midday Meal Scheme is being implemented in Puducherry directly by the Department of School Education and there is no involvement of NGOs \ Civic Body\ Private Agencies.

2.16: STATUS OF SCHOOL HEALTH PROGRAMME:

The height and weight of the students are recorded every six months in a separate register in every school in order to monitor the increase /decrease of height /weight. The Student Health Officer, Department of Health is periodically visiting the schools and each and every student is having a Health Card in which the medical officer recorded all his findings. There is no case of malnutrition among students reported so far. The National Rural Health Mission is also monitoring the student's health. The Health Department has already been requested to provide Vitamin 'A' and iron supplements wherever necessary. In Puducherry, the Government is implementing not only the Midday Meal Scheme but also Shri Rajiv Gandhi Breakfast Scheme and Shri Rajiv Gandhi Evening Milk Scheme which ensure adequate micronutrients to the students.

2.17: STEPS TAKEN TO STRENGTHEN MONITORING MECHANISM:

The Monitoring Committees in Zonal level / District level / State level are likely to be constituted shortly and after constitution the meeting reports will be communicated.

2.18: ARRANGEMENTS FOR OFFICIAL INSPECTIONS TO MDM CENTRES:

The Chief Educational Officer, Puducherry / Karaikal / Mahe, the Deputy Director (Women), Puducherry and the Delegate to the Director of School Education, Yanam are the Nodal Officers for the implementation of the Midday Meal Scheme in the respective regions and all the Deputy Inspector of schools are the Inspecting Officers for the implementation of the Midday Meal Scheme. The Nodal Officers and the Inspecting Officers are periodically inspecting the Central Kitchens / School Canteen Centres to ensure the quality of food prepared in the kitchens and also draw random samples of diet articles to ascertain the quality under the Prevention of Food Adulteration Act, 1954 and Rules made there under. Number of food samples were drawn from the central kitchens and sent to Public Health Laboratory, Gorimedu to ascertain the quality as per the prescribed standards. So far no substandard / adulteration of diet articles is reported by the Public Analyst, Public Health Laboratory, Gorimedu.

In addition, the Store Superintendent of the Directorate of School Education and the Stock verifier of the respective Nodal Officers are also visiting all the kitchens periodically to verify the stock position and other related issues.

2.19: FEEDBACK / COMMENTS IN RESPECT OF REPORT OF MONITORING INSTITUTIONS:

The Pondicherry University is designated as the Monitoring Institution on the implementation of Midday Meal Scheme in Puducherry and a report in this regard is awaited. In addition, Madras Institute of Development Studies, Chennai is also evaluating the implementation of the scheme in Puducherry and its report is also awaited.

2.20: **OVERALL ASSESSMENT :**

In Puducherry, the midday meal programme is being implemented since 1930 i.e. from the French regime. The Midday Meal Scheme is covering all the students studying from Pre-Primary to XII Std. in the Government / Government Aided Private Schools and nearly 1.26 lakhs students are covered under the scheme. In addition Shri Rajiv Gandhi Breakfast Scheme and Shri Rajiv Gandhi Evening Milk Scheme are also being implemented for the welfare of the students in Puducherry. The Midday Meal apart from providing nutrition, teach children the way of living together without any discrimination of caste, community etc. It provides food security to the children and also play a vital role in boosting school attendance, punctuality and attentiveness in the classrooms, eliminating dropouts, classroom hunger and also fostering social equity. It reduces the gender gap and the enrolment of girl students in primary and upper primary is actually surpassing the male students in primary and upper primary level in Government / Government Aided School.

CONCLUSION :

The Midday Meal Scheme is being implemented directly by the Department of School Education, Puducherry through Central Kitchens / School Canteen Centres. In addition, the Shri Rajiv Gandhi Breakfast Scheme and Shri Rajiv Gandhi Evening Milk Scheme, Unique and Novel Schemes, the first of its kind in the whole of India, are also being implemented directly by the Department of School Education, Puducherry.

Due to the implementation of Midday Meal Scheme / Shri Rajiv Gandhi Breakfast Scheme and Shri Rajiv Gandhi Evening Milk Scheme in this Union Territory of Puducherry, the school attendance and enrolment of students in the schools have been improved and also enhanced the student's nutritional status and thereby reducing the status of malnutrition. It contributes to gender equality by reducing the gender gap in Education by boosting female attendance in schools. It also contributes all round development of the entire school system. The height and weight of the students have also shown marked improvement. The dropout ratio has been drastically reduced to Nil in Primary level and 3% in the upper primary level due to the implementation of the above said welfare schemes. The per-capita expenditure on Midday Meal Scheme is the highest in the whole of India

It is also appropriate to point out at this juncture that dignitaries from other neighboring States including Countries like Nepal are visiting Puducherry to study the innovative methods being adopted in the implementation of the Midday Meal Scheme in Puducherry. The Union Territory of Puducherry is becoming a model State in the implementation of the scheme with other State level additions like breakfast scheme and evening milk scheme. The per capita expenditure on nutrition is the highest in the whole of India.

(Dr. S. SUNDARAVADIVELU)
DIRECTOR OF SCHOOL EDUCATION,
PUDUCHERRY

