

**National Programme
of
Mid Day Meal in Schools
(MDMS)**

**Annual Work Plan & Budget
2012-13**



मध्याह्न भोजन योजना
Mid Day Meal Scheme

Name of the State :- BIHAR

Mid Day Meal Programme Annual Work Plan and Budget 2012-13

1. Introduction:

1.1 Brief history.

The Mid-Day Meal (MDM) programme is being implemented in the State since January 2005, after the notification by the State Government on 18th December 2004 to implement the MDM in all primary schools in Bihar. Earlier in 2003-04, the State had experimented with provision of cooked meal in about 2531 schools spread over 30 blocks in 10 districts. It was later scaled up to all of 15,000 schools in these districts, covering about 30 lakh children. Further, the programme was implemented in all the 38 districts of Bihar in the year 2007-08. At present, 15315571 children enrolled in primary schools (Table:AT-4) and 5244628 children enrolled in upper primary schools (Table:AT-4A) are covered under MDM scheme in 41481 primary schools and 23291 in Upper Primary School comprising government and government aided, AIE Centres, Madarsas / Maqtaba (Table:AT-3, AT-3A, AT-3B). The State in the year 2009-10 has implemented the MDM programme in all the government and government aided primary schools, upper primary schools, AIE centers, along with government aided Sanskrit schools, covering the children of 6-14 years age group.

The MDM scheme is guided by the principle that all children have Right to Life, Food, Education and Development. These fundamental human rights of the children are enshrined in the UN Convention on the Rights of the Child (CRC), the Indian Constitution and also in pronouncements of the Supreme Court.

The State, therefore, is committed to provide food and education to all children. This is the basic philosophy behind providing mid-day meal to all children in primary and upper primary schools in the state, where 42% of the population live below the poverty line. At present, Mid Day Meal Programme is being implemented in all the districts (38) of Bihar. The State Government has established a Mid-Day Meal Cell in the Secretariat for the Monitoring and Supervision of the programme. The State Government has also formed a Society named “Bihar Rajya Madhyanha Bhojan Yojana Samiti”, to implement and supervise MDM scheme in the State.

The main objective of the Mid-Day Meal (MDM) programme is to bring all children in the primary schools with three major objectives:

- a) Child nutrition,
- b) Educational advancement, and

c) Social equity.

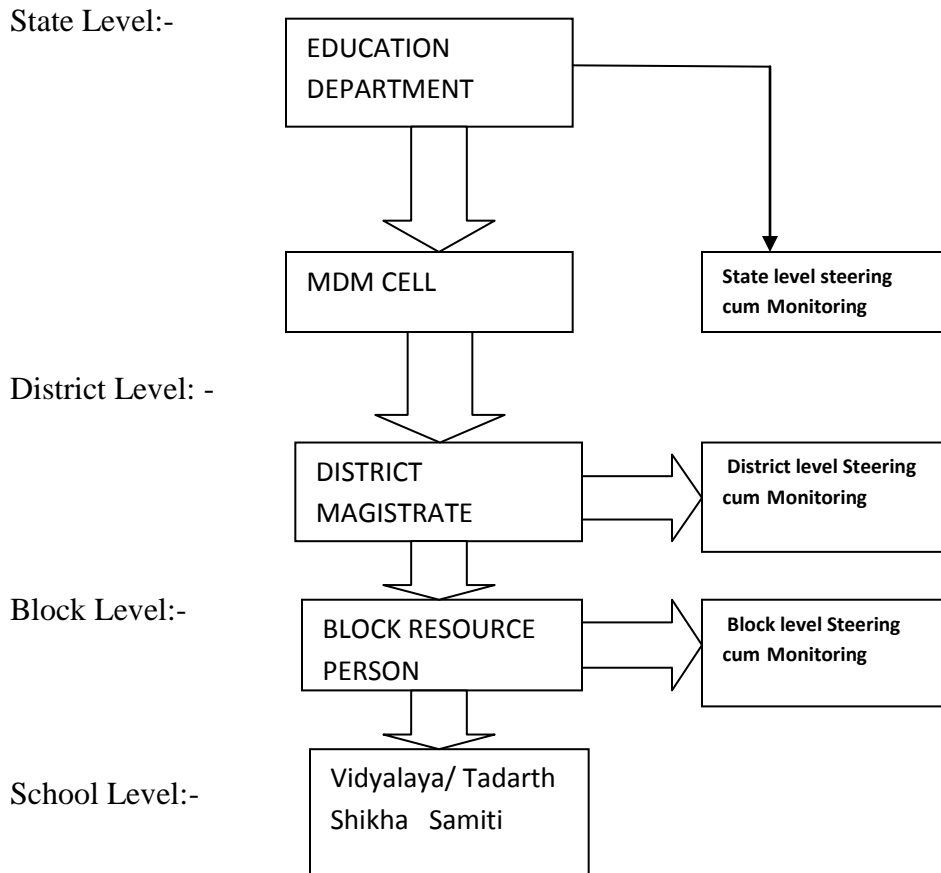
Also, the Mid-Day Meal Scheme is viewed as an opportunity to inculcate hygiene and sanitation practices among children.

Demographic Profile of the State:

Bihar is located in the eastern part of the country (between 83° 30' to 88° 00' longitude). It is an entirely land-locked state, although the outlet to the sea through the port of Kolkata is not far away. Bihar lies mid-way between the humid West Bengal in the east and the sub humid Uttar Pradesh in the west, which provides it with a transitional position in respect of climate, economy and culture. It is bounded by Nepal in the north and by Jharkhand in the south. The Bihar plain is divided into two unequal halves by the river Ganga which flows through the middle from west to east.

Physical Features	
Longitude	24° 20' 10" 27° 31' 15" N
Longitude	83° 19' 50" - 88° 17' 40" E
Rural Area	92,257.51 sq. km
Urban Area	1,095.49 sq. km
Total Area	94,163.00 sq. km
Height above Sea-Level	173 Feet(52.73 Meter)
Normal Rainfall	1,105 mm
Avg. Number of Rainy Days	50 Days in a Year

1.2 Management Structure



1.3 Process of Plan Formulation.

- (i) School compile data and sends data to Block
- (ii) Block analyse the data and sends data to Districts
- (iii) Districts evaluate the data and prepares the AWP on the basis of data sent by Blocks
- (iv) Districts then send AWP to the State
- (v) State analyses and evaluate the data of the AWP provided by the districts
- (vi) Then the State Prepares, AWP to send it to the Govt. of India.

2. Description and assessment of the programme implemented in the current year (2011-12) and proposal for next year (2012-13) with reference to:

The Education Department of the State Government is the Nodal Department for the Mid-Day Meal Scheme at the State level. A State Level Steering – cum - Monitoring Committee monitors the programme. The District Magistrate is the Nodal Officer of the scheme at the District level. The Mid-Day Meal Programme is monitored at District and block levels by Steering-cum-Monitoring Committees.

In year 2006-07, a State level “MDM Cell” was constituted in the leadership of Director Primary Education in Bihar. Considering the immensity of the programme in the year 2007-08 the State Govt. created a separate MDM Directorate under the “Human Resource Development

Department” of the State under a separate Director with a State Programme Coordinator, one database administrator, four Assistant Programme-Coordinators, to assist him with a team of two junior Monitoring officers, four Assistant, One Account officers, two Accountant, three peons and three Computer Operators. A Society named “Bihar Rajya Madhyanha Bhojan Yojana Samiti” has been formed and registered under the Society Registration Act, 1860 to implement MDM Scheme in the State. At district level a MDM Cell has been constituted under the leadership of District MDM Incharge (A senior Deputy Collector from from Bihar Administrative service)who is assisted by one District Coordinator, one Accountant-cum-Computer Operator and two Resource Persons. At Block level MDM Cell is headed by one Resource Person.

At school level under the guidance of Vidyalaya Shiksha Samiti (VSS)/Tadarth Samiti, Mata Samiti / Mahila Samakhya / Self Help Group is assisting in preparing Mid Day Meal and its distribution. It is an important step for ensuring community participation in the programme. In a few blocks of a few districts some NGOs have been allotted this work who prepare the meal in centralized kitchen and serve the students.

- A Training programme was organized for cooks cum helper from 27.02.2012 to 02.03.2012 as Master trainer of cooks cum helper of all 38 Districts of the state.
- A C.A . firm has been engaged to improve financial management and to update the Accounts of Head Quarter and Districts. The C.A. Firm has also been assigned the task of preparing the monthly, quarterly and annual reports of accounts and utilization of funds.The C.A. Firm will also provide training to the district level accountants so as to improve their accounting skills.
- We have introduced web based MIS to procure all types of data from schools at monthly basis. This MIS works in the following manner. Our block level resource person collects data from schools and enters them in our WEB based MIS in the first week of each month and we use this data as per our needs to ensure successful running of MDM scheme in each school. You all are aware that uninterrupted running of MDM needs enough availability of funds and food grains in every schools. You will be happy to know that our WEB based MIS generates fund and food grains advise automatically according to the needs of the schools for next three months.Our district office just takes out a print of the web generated need based fund and food grains advice to ensure sufficient availability in the schools

Proposal for (2012-13):-

- We have introduced to Collect Real time data of beneficiaries of MDM scheme through IVRS after the completion of Mid-day Meal session every Day from each schools from 1st of april .
- Capacity building MDM 's staff
- Increasing number of staff in bigger size block

2.1 Regularity and wholesomeness of mid day meals served to children; reasons for programme interruptions, if any and planning to minimise them.

All school have a display board where menu for the week is displayed and it is followed in all schools.. The menu is prescribed by the state, the state officials indicated that the district has the option of making local changes in seasonal basis in the schools .There is a nutritional expert at the state level to prescribe the menu.

Daily Prescribed Menu	
1	Rice-pulse-Vegetables
2	Rajma- Rice
3	Soyabean-pulse – Rice
4	Khichari – Chokha
5	Kadi-Chawal
6	Dal-Pulav
7	Chola – chawal

Short span of time grain from FCI to interruption in the

affected the lifting of food SFC which caused implementation of the

programme. Also, lack of coordination between SFC and FCI to affected the supply of food grain which badly affected the implementation of the programme in the State.

2.2 Coverage of children of NCLP schools as per upper primary norm. NCLP schools are primary schools but eligible for benefit as per upper primary norm.

All NCLP schools are covered under Mid-day scheme and children are benefit as per upper primary norm.

All NCLP school are covered under Mid-day scheme and children are benefit as per upper primary norm but they are enrolled in Primary schools.

- 2.3 Foodgrains management, including adequacy of allocation, timeliness of lifting, transportation and distribution, and suitability of storage at different levels. Challenges faced and plan to overcome them.

The food grains are allotted to the state by Govt. of India, on the basis of PAB (project approval board) based on the enrolment. It is then sub-allotted by state to the Districts on the basis of district PAB and there after District Magistrate sub-allotted the food grain to the blocks. On receiving the information on sub-allotment, the State Food Corporation (SFC) lifts the food grains from the FCI godowns. Then Food grains lifted by the Block Resource person of MDM through local private contractor from SFC to schools to ensure timeliness of the lifting, and adequacy of the quantity and quality of the food grains. After lifting of food grain from FCI to SFC , FCI raise the bills pertaining to lifting of food grain during a month to the MDM Incharge to the next month and MDM Incharge make the payment to FCI to consent of district magistrate on the basis of lifting and availability of fund in foodgrain through MDM incharge of the district.

To facilitate transportation of the food grains a decision was taken to pay the Contractor the transportation cost as Rs. 35/- per quintal from SFC godown to SFC and rest Rs. 40/- per quintal lifting of foodgrain from SFC to the school. Newly Constructed Kitchen-cum-store rooms have been provided with sufficient place for storing foodgrains. To fight against any possibility of the misuse of foodgrains it has been decided by the state that the FCI will mark stamp 'MDM' on every bag in red color.

Short span of time affected the lifting of food grain, which caused interruption in the implementation of the programme in the current year. also in most of the schools don't have container to store the foodgrain for next two to three months.

- 2.3 System for payment of cost of foodgrains to FCI. Status of pending bills of FCI of the previous year

After lifting of food grain from FCI to SFC , FCI raise the bills pertaining to lifting of food grain during a month to the MDM Incharge to the next month and MDM Incharge make the payment to FCI to consent of district magistrate on the basis of lifting and availability of fund in foodgrain through MDM incharge of the district. only 5% (approx) bills are pending of previous year

- 2.4 System for release of funds provided under MDM (Central and State). Please indicate the dates when the fund was released to State Authority / Directorate / District / Block / Gram Panchayat and finally to the Cooking Agency / School.

- a. At first, required central and state share is allocated in the Budget Provision.
- b. Then, we get Outlay of required State share.
- c. For sanctioning of fund we have to reach State Empowered Committee & State Cabinet through Sanlekh.
- d. Then for sanctioned amount from State Cabinet, Sanctioning letter is issued.
- e. After sanctioning of amount, an allotment letter is issued to withdraw the amount from treasury.
- f. After withdrawing the fund, it is sent to Districts by the “Bihar Rajya Madhyanha Bhojan Yojana Samiti”, Patna. through RTGS transfer.
- g. The above process takes more time to release the fund to the Districts. To avoid this delay, Central Assistant should be released directly to the “Bihar Rajya Madhyanha Yojana Samiti”, Patna.
- h. At least 50% of Transportation Cost should be released with cooking cost.

2.6 Submission of Information in Mandatory Table (AT-24).

We have mention Status of Releasing of Funds by the State to Districts and Districts to School in Table No AT-24.

2.7 System and mode of payment of honorarium to cook-cum-helpers and implementing agencies viz. NGOs / SHGs / trust / centralized kitchens etc.

Cook-cum-helpers are engaged in schools as per guideline given by MHRD.

One cook-cum-helper is engaged in a school having upto 25 students and given an honorarium @ Rs. 1000 per month ,two cooks are engaged for school having 26 to 100 student. Like this way an additional cooks are engaged for every additional 100 students an given Rs. 1000 as honorarium on 75.25 central and state share basis. In case of NGO and Mahila Samakhya half of the honorarium of the cook-cum-helper given to NGO and Mahila Samakhya and half of the honorarium of the cook-cum-helper given to School on the number of students

2.8 System for procuring cooking ingredients (pulses, vegetables including leafy ones, salt, condiments, oil and fuel etc.), Commodities, which are centrally purchased and supplied to schools or locally purchased at school level.

At School level Cooking ingredients like oil, fuel, condiments, pulses,salt etc. are locally purchased by the VSS, Mahila Samakhya and NGOs , all these things are easily procurable in local markets everywhere. Implementing the new rate of conversion cost for Primary school children Rs. 2.92 per meal per child and for upper primary Rs. 4.33 per meal per child of cook is being provided to the schools.

2.9 System for cooking, serving and supervising mid day meals in the school and measures to prevent any untoward happening.

In the schools VSS/ Mahila Samakhayas employs their own cook and serve them. Where as NGOs serve the MDM through centralized Kitchen .

Complying the direction of govt. of India one cook-cum-helper for 25 children, two cooks for hundred children and one additional cook for additional 100 children onwards are being engaged to cook the MDM the direction is also being given to VSS/, Resource persons of Block level, BEEOs and SDEOs regularly supervise and inspect the whole operation.

2.10 Procedure and status of construction of kitchen-cum-store.

- (i) The fund is made available to the districts with estimate and map.
- (ii) After that monthly monitoring is done district-wise
- (iii) The Kitchen Shed is built in the supervision of the civil engineer.

2.11 Procedure of procurement of kitchen devices from (i) funds released under the Mid Day Meal Programme (ii) other sources.

All fund has been provided for kitchen devices to schools out of MDM fund from 2006-07 to 2009-10 for purchasing kitchen device. Right now all schools have purchased kitchen device.

2.12 Capacity building and training conducted for different categories of persons involved in the Mid Day Meal Programme.

In order to make a good monitoring system the Resource persons in particular, have been given vigorous training at District and State level regarding maintains of nutrition level, hygiene, cleanliness in MDM, and identifying cases of malnutrition and paediatric diseases.

2.13 Management Information System at School, Village/ Gram Panchayat, Block, District and State level its details.

We get all progress report in form of “K”, “Kh” and “Ga” and also additional monthly status format from school, Block and District level respectively, which in itself is much informative. Resource Persons do the data collecting and reporting work on priority basis.

The state of Bihar had introduced on line monitoring system of the MDM. It plays a vital role in the State of Bihar to collect information from school level to Block, Block to District and from District to State. At present, it is used to collect information about number of enrollment, number of meal served, number of school opened and expenditure. These information help us to know the current status of mid day meal implementation. We have introduced web based MIS to procure all types of data from schools at monthly basis. This MIS works in the following manner:-

Our block level resource person collects data from schools and enters them in our WEB based MIS in the first week of each month and we use this data as per our needs to ensure successful running of MDM scheme in each school. This system provides uninterrupted running of MDM through regular availability of funds and food grains in every school. This WEB based MIS generates fund and food grains advice automatically according to the needs of the schools for next three months. Our district office just takes out a print of the web generated need based fund and food grains advice to ensure sufficient availability in the schools

- 2.14 Systems to ensure transparency, accountability and openness in all aspects of programme implementation, including inter alia, foodgrains management, ingredients procurement, cooking and serving, appointment of cooking staff, construction of kitchen-cum-store, and procurement of cooking devices.

So far foodgrain management is concerned now the Private Contractors have been entrusted to off take foodgrains from SFC and distribute the same to schools. Ingredients procurement, cooking and serving and appointment of cooking staff is done by the MDM preparing agencies and the construction of kitchen shed and kitchen device is done by VSS.

- 2.15 Measures taken to rectify:

- a) Inter-district low and uneven utilization of food grains and cooking cost.
 - b) Intra-district mismatch in utilization of food grains and cooking cost.
 - c) Delay in delivering cooking cost at school level.
-
- (a) More often due to flood conditions during monsoon season, biting cold in the winter or drought in most part of the state 2012-13 and non availability of Godowns of the SFC for storage of foodgrains at all Block head quarters create conditions of low and uneven utilization of foodgrain and cooking cost. SFC has been requested to keep sufficient food stock in the Godowns and take action to provide new Godowns at block level.
 - (b) After finding the instance of mismatch in utilization of cooking cost and foodgrains close monitoring is conducted and explanations asked and appraised.
 - (c) we are in process of opening all school's bank account in CBS bank to transfer conversion cost from district to school timely.

- 2.16 Details of Evaluation studies conducted by State/UTs and summary of its findings.

- (a) 80% of surveyed schools provide hot cooked meal.
- (b) About 70% children, teachers and guardians accept that menu is followed.
- (c) 60% children said that green vegetables are provided under MDM Programme.

- (d) About half of the schools have kitchen sheds.
- (e) 80% children paid attention on cleanliness and they were disciplined.
- (f) In general (95%), there was no discrimination in serving MDM.
- (g) Off take of food grain is 72% on the basis of 2009-10.
- (h) 54% enrolled children of Primary and Upper Primary schools avail MDM in Bihar.

Evaluation Report of “ACER”:

According to the evaluation report of “ACER” coverage of MDM Programme has increased from 38.4% to 62.7% during 2005- 2009

2.17 Brief writes up on best practices followed in the State.

There are many examples of good practices in some of the schools in each district as community support, support of individuals in cooking, providing materials and serving rich food to the students.

2.18 Instances of unhygienic food served, children falling ill, sub-standard supplies, diversion/misuse of resources, social discrimination and safety measures adopted to avoid recurrence of such incidents

There was one instance of around some children falling ill and death of two children in sitamadhi district where enquiring was conducted by Director, MDM and it was found that the illness was very minor in nature and children were released from hospital on the same day and death of two children due to previous disease . The State government has given strong instructions for serving of hygienic food to the children. The VSS/Mahila Samakhya/NGO persons have to taste the food daily before distribution to the children.

2.19 Extent of involvement of NGOs and Civic Body Organizations (CBOs)/PRIs in the implementation and monitoring of the Scheme.

Bihar government is taking service of NGOs in urban area in 14 districts of the State for the implementation of MDM programme in a better way. Civic bodies like Gram Panchayats and PRI representatives are also supporting us in monitoring the scheme.

2.20 Status of School Health Programme with special focus on provision of micro-nutrients, Vitamin-A, de-worming medicine, Iron and Folic acid, Zinc, distribution of spectacles to children with refractive error and recording of height, weight etc.

We are in the process of getting help of the health department in near future for provision of health cards to the children, in which the special focus will be given for the provision of micro-nutrients, de-worming medicines etc. Weighing machines are being purchased for schools.

2.21 Present monitoring structure at various levels. Strategy for establishment of monitoring cell at various levels viz. Block, District and State level for effective monitoring of the scheme.

- The State Government has established a Mid-Day Meal Cell for the Monitoring and Supervision of the programme.
- The State Government has also formed a Society named “Bihar Rajya Madhyanha Bhojan Yojana Samiti”, to implement and supervise MDM scheme in the State.
- Two resource persons at District level and one resource person at Block level has been appointed on contract basis for regular monitoring and support. In Addition, one District Coordinator and one Accountant-cum- Computer operator have been appointed on contract basis at district level.

2.22 Steps taken to strengthen the monitoring mechanism in the Block, District and State level and status of constitution of SMCs at these levels. Status of formation on School Management Committee at village / school / cooking agency level in the light of Right to Education Act, 2009

For strengthening the management and monitoring system from school to state level SMCs are constituted and their monthly meetings are being organized regularly. Every school management has its own school management committee and constitute 5 to 15 member to monitor the working of the school .by the end of every month BEEO (Block Education Extension Officer) held a meeting with BRP and member of school member committee to monitor the school ‘s utilization grant. Similarly at district level a district magistrate held meeting with SDEO/MDM Incharge and other MDM staff to monitor the utilization of different grant, lifting of foodgrain from FCI and payment made to them. A state level meeting held I every month with all district MDM Incharge at directorate for analyzing mid-day meal status in all respect like grievances , school monitoring and their fund status.

2.23 Arrangement for official inspections to MDM centres and percentage of schools inspected and summary of findings and remedial measures.

Departmental Officers inspect schools regularly. In some cases it was reported that VSS is not working because of lapse of its tenure. There are some cases of irregular supply of foodgrains. In those cases officers at district and block level take immediate action and some time also seek help of the higher officers from state level for formation of SMC and restoration of the supply of foodgrains.

2.24 Feedback/comments in respect of report of Monitoring Institutions designated for your State/UT to monitor implementation of MDM and action taken thereon.

We have feed back from different institutions that evaluated the MDM programme. They all accepted that the Enrollment and the Retention of the children in the schools has improved. There are many good examples, but in some unavoidable circumstances there are irregular serving of food to the students too. We have identified the specific problems and will be able to improve it.

It may, however, be noted that many districts of Bihar are seriously flood and drought hit districts, where during monsoon season all the normal activities are gravely jeopardized. During May to September of 2010 Bihar has suffered the worst drought condition in the living memory. And during this period, food grain transportation and Mid-Day Meal cooking have been paralyzed affecting the programme for many weeks on and off causing fall in consumption of the MDM and ultimately pulling down the overall consumption of the MDM in the state in the year 2009-10.

- 2.25 Grievance Redressal Mechanism if any, used by the States / UTs. Details of complaints received, nature of complaints and time schedule for disposal of complaints
- A Public Grievance Redressal Cell has been set up in the state office of Director, Mid-day Meal Scheme in order to ensure immediate attention to any issues/problems relating to implementation of Mid-day Meal Scheme in Schools across the State of Bihar. MDM Cell at the Directorate has been initiating various measures for ensuring smooth and effective implementation of MDM scheme across the state in order to have cent percent coverage of children in 6-14 age groups.

2.26 Media campaign, if any.

No.

- 2.27 Overall assessment of the manner in which implementation of the programme is contributing to the programme objectives and an analysis of strengths and weaknesses of the programme implementation.

To improve the implementation of the scheme many important decisions have been taken:-

1. Private contractors will off take rice from SFC godowns and make the delivery to schools directly.
2. One full time Officer (Senior Deputy Collector) has been made in charge of MDM at district level.
3. Two resource persons at District level and one resource person at Block level has been appointed on contract basis for regular monitoring and support. In Addition, one District Coordinator and one Accountant-cum- Computer operator have been appointed on contract basis at district level.
4. Many others steps Convergence with other departments, NGOs help, external evaluation, Sample audit etc. have been taken for the improvement in the scheme.

INDEX

Sl. No.	Table	Particulars
1	AT-1	General Information-2012-13
2	AT-2	Details of Provisions in the State Budget 2012-13
3	AT-3, 3 A & 3 B	COVERAGE (No. of Institutions covered) [Primary & Upper Primary]
4	AT-4 & 4 A	District-wise information on Enrollment and Children availing MDM for 2012-13 [Priy & U PY]
5	AT-5 & 5 A	Approval Vs. Performance (PY & U PY) during 2012-13
6	AT-6 & 6 A	Utilization of food grains (PY & U PY)) during 2012-13
7	AT-6B	Payment of cost of food grains to FCI (Primary & Upper Primary)
8	AT-7 & 7 A	Utilization of Cooking Cost (PY & U PY)) for 2012-13
9	AT-8 & 8 A	Utilization of Central assistance towards Honorarium to Cook-cum-Helper (PY & U PY)
10	AT- 9	Utilisation of Central Assistance towards Transportation (Classes 1- VIII)) during 2012-13
11	AT-10	Utilisation of Central Assistance towards MME (Classes 1-VIII)) during 2012-13
12	AT-11	Utilisation of Central assistance towards construction of kitchen sheds (Classes 1- VIII)
13	AT-12	Utilisation of Central assistance towards Procurement of kitchen devices (Classes 1- VIII)
14	AT-13 & 13A	Number of School Working Days (Primary & Upper Primary)
15	AT-14	Requirement of Central Assistance towards Foodgrains, Cooking Assistance & Transport Assistance for 2012-13 for Primary Cl;asses (Classes 1-V)
16	AT-14 A	Requirement of Central Assistance towards Foodgrains, Cooking Assistance & Transport Assistance for 2012-13 for Upper Primary Classes (Classes VI-VIII)
17	AT- 14 B	Requirement of Central Assistance towards Foodgrains, Cooking Assistance & Transport Assistance for NCLP Schools 2012-13
18	AT- 14 C	Requirement of Central Assistance towards Foodgrains, Cooking Assistance & Transport Assistance for Primary in Drought Affected are during 2011-12
19	AT-14 D	Requirement of Central Assistance towards Foodgrains, Cooking Assistance & Transport Assistance for Upper Primary in Drought Affected are during 2011-12
20	AT-15	Requirement of kitchen cum stores in the primary and Upper Primary schools for the year 2012-13
21	AT- 15 A	Requirement of kitchen cum stores as per plinth area norm in the primary and Upper Primary schools for the year 2012-13
22	AT-16	Requirement of kitchen device during 2012-13 in primary & upper primary schools.
23	AT-17	Weighing machine & height Recorder in primary & upper primary school
24	AT-18	Requirement of cook cum Helpers for 2012-13.
25	AT-19	Formation of School management committee (SMC) at School level for monitoring the school.
26	AT-20	Responsibility of Implementation.
27	AT-20A	Name of Voluntary Organizations
28	AT-21	Coverage under School Health Programme -2011-12
29	AT-22	Information on Cooking Agencies
30	AT-23	Budget Provision for the Year 2012-13 .
31.	AT-24	Releasing of Funds from State to Directorate / Authority / District / Block / School level for 2011-12.

