

Mid Day Meal Scheme Madhya Pradesh



**Government of Madhya Pradesh
Panchayat & Rural Development Deptt.**

Demographic Profile

- Districts - 51
- Total Blocks - 313
- Tribal Blocks - 89
- Municipal Corporation - 14
- Municipalities - 100
- Nagar Panchayat - 263
- Gram Panchayat - 23010
- Villages - 54903



Weekly Menu of Mid Day Meal

Day	Weekly Menu of rural & urban areas
	Wheat / Rice Dominated Area
Monday	Chapati / Rice with daal (Tuar/Arhar) and vegetable of kabuli chana and tomato.
Tuesday	Puri / Pulav with Kheer / halwa and Vegetable of mung badi with Potato & Tomato.
Wednesday	Chapati / Rice with chana daal and mix vegetable.
Thursday	Vegetable pulav with pakoda kadi.
Friday	Chapati / Rice with mung daal & vegetable of green matar / sukha chana.
Saturday	Paratha / Spicy Rice with mix daal & green vegetable.

Weekly Menu of Mid Day Meal

Day	Weekly Menu of centralized kitchen
	Wheat / Rice Dominated Area
Monday	Vegetable pulav with pakoda kadi.
Tuesday	Puri with Kheer/halwa and chole/matar Vegetable.
Wednesday	Jeera Rice with mix vegetable & tuwar dal.
Thursday	Chapati with soya chungus/mung or chana badi with potato vegetable & tuwar dal.
Friday	Khichdi (with moong dal) & potao, matar with tomato vegetable.
Saturday	Chapati & green mix vegetable & mix dal.

No. of Working Days



Sl. No.	Months	No. of working Days
1	2	3
1	April,14	12
2	May,14	0
3	June,14	13
4	July,14	27
5	August,14	24
6	September,14	25
7	October,14	22
8	November,14	23
9	December,14	23
10	January,15	26
11	February,15	22
12	March,15	23
	Total	240

No. of institutions year 2014-15

S.N.	SCHOOL FACILITIES	PAB APPROVED 2014-15	ACHIEVEMENT	% OF ACHIEVEMENT
1	2	3	4	5
PRIMARY SCHOOLS				
1	Government schools	83501	83501	100.00
2	Aided schools	812	812	100.00
3	Registered Madarsa	1454	1454	100.00
4	NCLP Schools	375	375	100.00
Total :-		86142	86142	100.00
UPPER PRIMARY SCHOOLS				
5	Government schools	29850	29850	100.00
6	Aided schools	280	280	100.00
7	Registered Madarsa	435	435	100.00
Total :-		30565	30565	100.00
Grand Total		116707	116707	100.00

Review of the Scheme in first two quarters of the year 2014-15



Annuxer-1

Mid Day Meal scheme

Coverage : Children

2014-15

Sl. No.	Stage	Enrollment of Students	Opted Students	Percentage against Enrollment
1	2	3	4	5
1	PS	6264312	49888 25	79.6
2	MS	3386268	2619757	77.3
Total		9650580	7608582	78.8

Continue....(2)

Annuxer-2

Mid Day Meal scheme

Coverage : Children

2014-15

Sl. No.	Stage	PAB Approved Students	Opted Students	Percentage against PAB approved
1	2	3	4	5
1	PS	5012063	4988825	99.55
2	MS	2650000	2619757	98.88
Total		7662063	7608582	99.21

Continue....(3)

Utilization of Foodgrains

(In MT.)

Sl. No.	Components	Allocation for FY	Target for first two quarters	Achieved against Target	%
1	2	3	4	5	6
1	Primary	120000.00	53027.05	40414.81	76.21
2	Upper Primary	95964.54	40160.61	33378.09	83.11
3	Total	215964.54	93187.66 (MT.)	73792.90 (MT.)	79.1

Continue....(4)

Lifting of Foodgrains

(In MT.)

Sl. No.	Components	Allocation for FY	Target for first two quarters	Achieved against Target	%
1	2	3	4	5	6
1	Primary	120000.00	53027.05	43984.99	82.09
2	Upper Primary	95964.54	40160.61	33403.28	83.17
3	Total	215964.54	93187.66	77388.27	83.04

Continue....(5)

Cooking Cost

(Rs.In Lakhs.)

Sl. No.	Components	Allocation for FY	Target for first two quarters	Achieved against Target	%
1	2	3	4	5	6
1	Primary	40080.00	17453.5	13767.1	78.8
2	Upper Primary	31988.19	13829.2	11315.8	81.82
3	Total	72068.19	31282.7	25082.98	80.18

Continue....(6)

Cook-Cum-Helper

(Rs.In Lakhs.)

Sl. No.	Components	Allocation for FY	Target for first two quarters	Achieved against Target	%
1	2	3	4	5	6
1	Primary	19676.57	6969.12	6334.07	90.88
2	Upper Primary	7107.94	2949.24	2585.78	87.67
3	Total	26778.51	9918.44	8919.85	89.93

Match/Mismatch in Utilization

Sl. No.	Stage	% of Opted Students	Utilization of Foodgrains	Lifting of Foodgrains	Cooking Cost	Cook-Cum-Helper
1	Primary Schools	99.55	76.21	82.09	78.8	90.88
2	Upper Primary Schools	98.88	83.11	83.13	81.82	87.67
Overall		99.21	79.1	83.04	80.18	89.93

Review of Payment of Cost of foodgrains to FCI/NAN



Transportation Bill Raised : 6.29 Crores

Payment Done : 6.29 Crores

Payment of Cost of Foodgrains (April-14 to September-14)

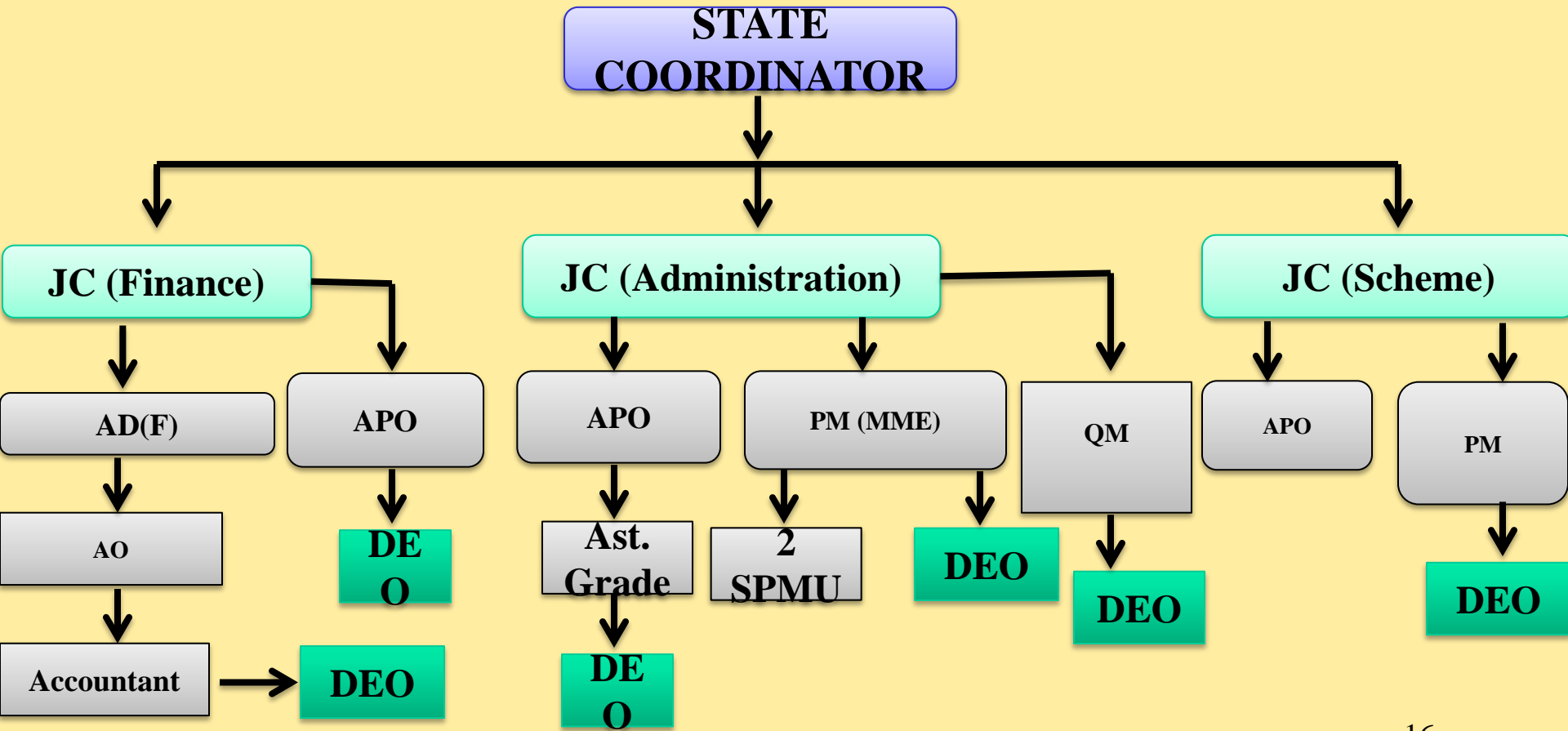
(Rs. In Lakhs)

Sl.No	Stage	Foodgrain allocated for the FY(in MTs)	Funds Released by GOI (Rs. in lakh)	Target of Foodgrain	Lifting of Foodgrain	Cost of Foodgrain against target	Cost of Foodgrain against Lifting	Payment Done
1	2	3	4	5	6	7	8	9
1	Primary	120000.00	1411.56	53027.05	43984.99	2249.04	1865.54	1411.56
2	Upper Primary	95964.54	2505.71	40160.61	33403.28	1703.33	1416.73	2505.71
Total		215964.54	3917.27	93187.66	77388.27	3952.37	3282.27	3917.27

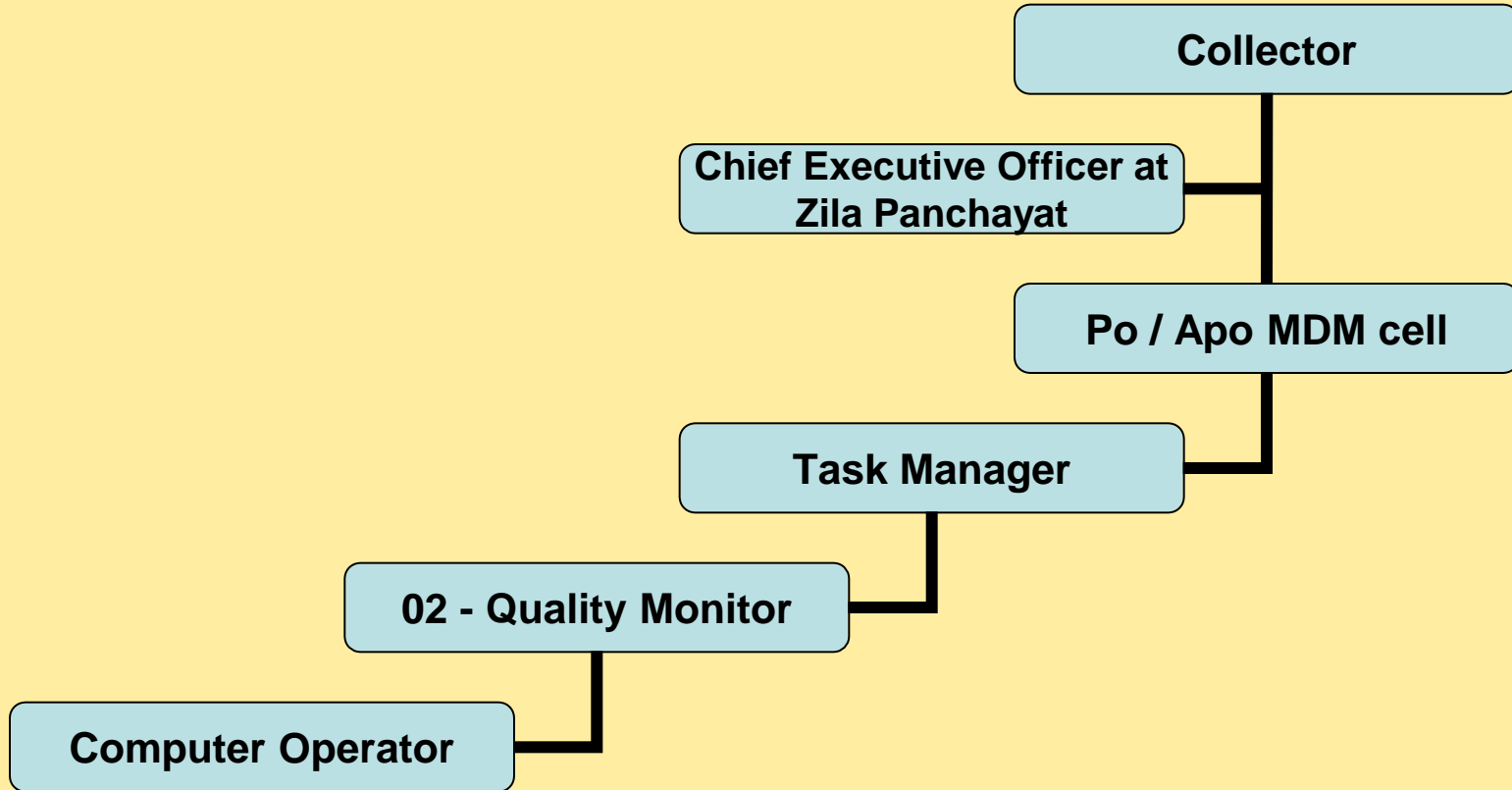
SHG/Cooking/Implementing Agencies-

1. 70,000 SHG's in about 1lakh Schools.
2. All Women
3. All CCHs are women.
4. Mainly SHG's of SC/St,Weeker Section and poor women groups.
5. On an average one Shg's implements in one or two schools.
6. CCHs are mothers of Children

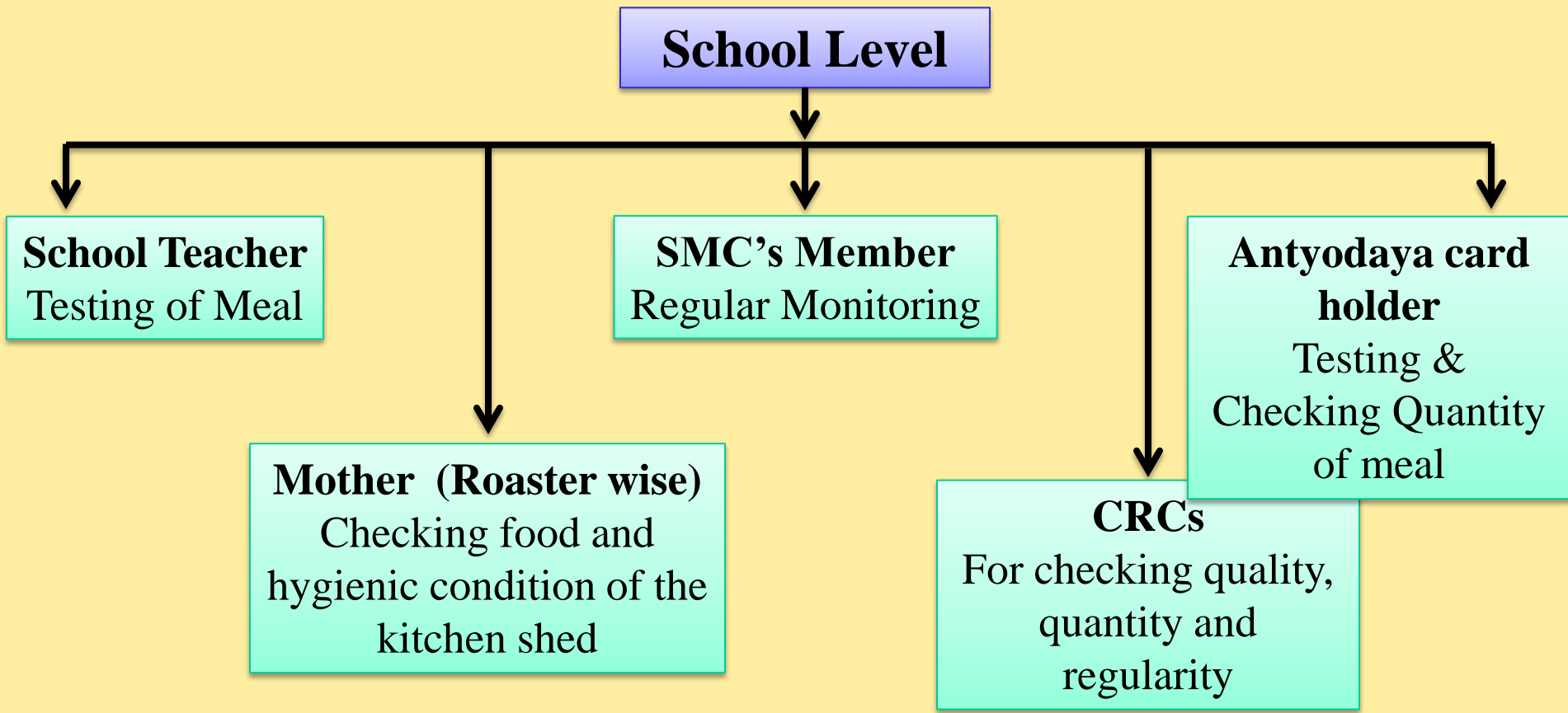
MANAGEMENT STRUCTURE AT STATE LEVEL



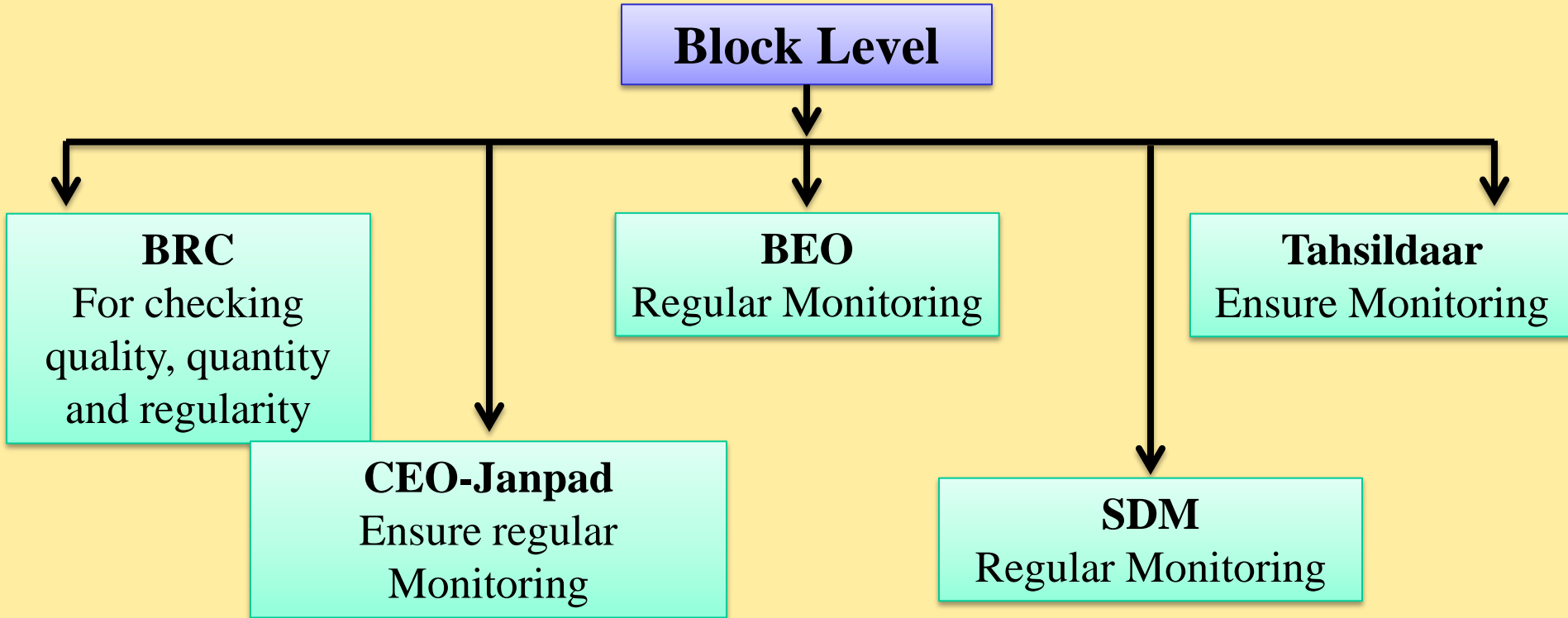
MANAGEMENT STRUCTURE AT DISTRICT LEVEL



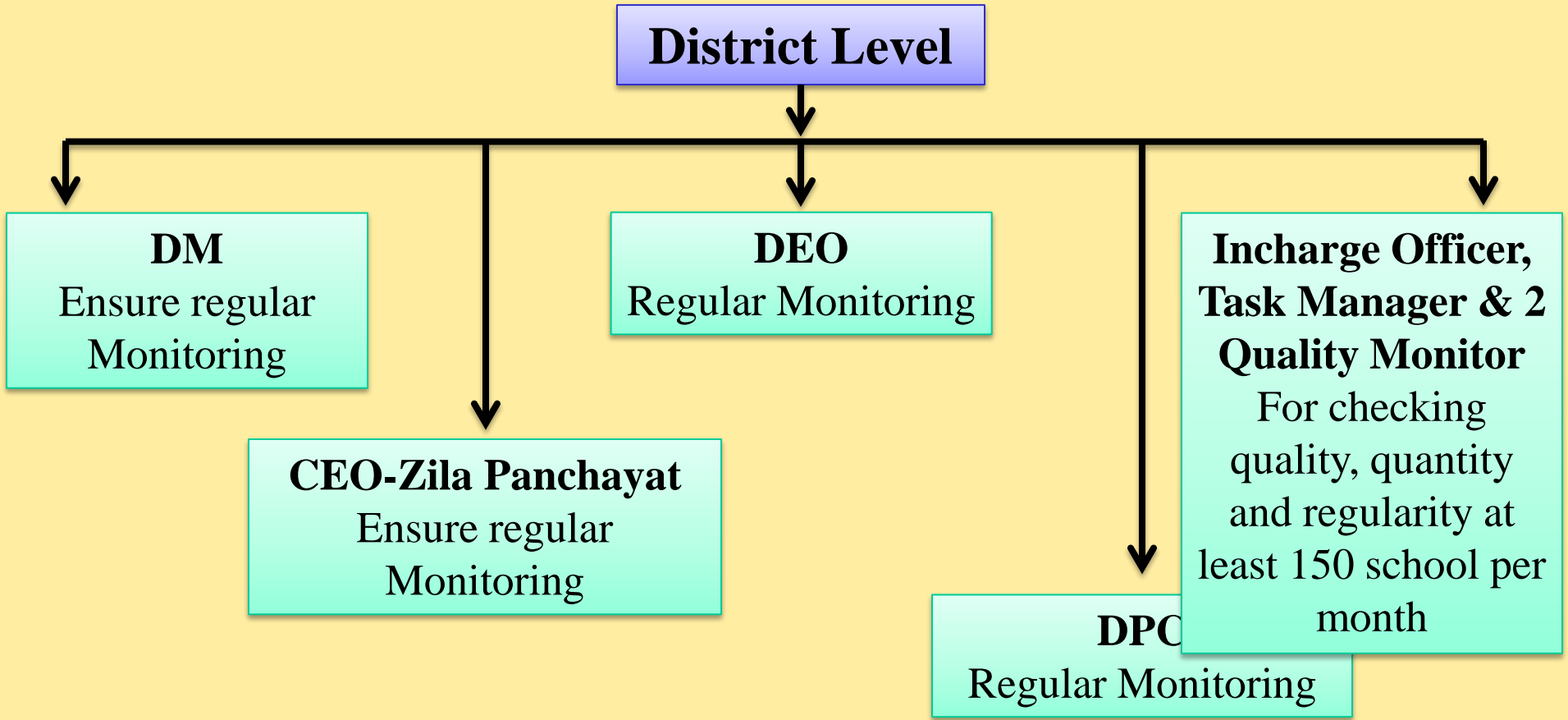
Monitoring structure at various levels



Monitoring structure at various levels



Monitoring structure at various levels



Monitoring structure at various levels



State Level

State Coordinator
Overall
supervision and
Monitoring

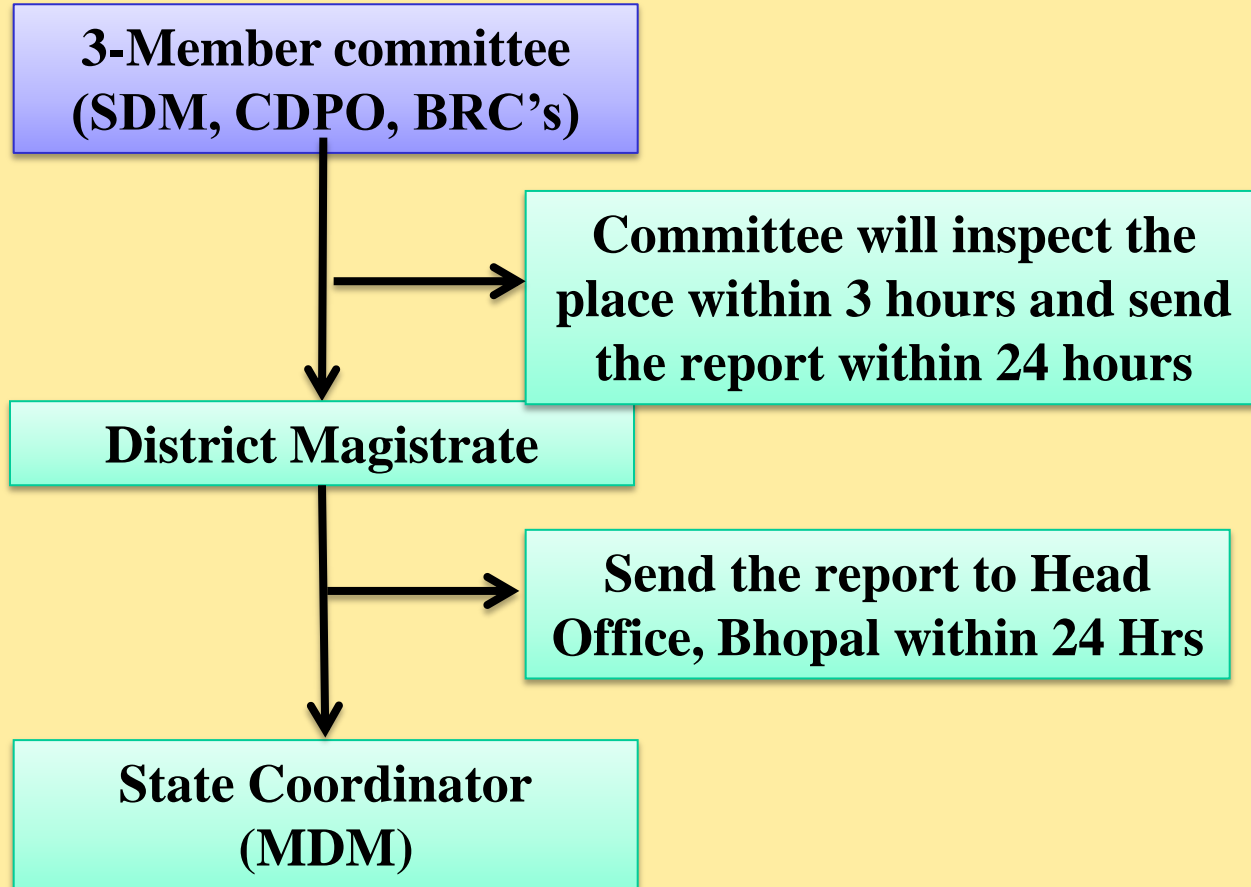
2-Assist. Project Officer
Regular Monitoring in 2
district in each month

2-Team Build-Up
Monitoring 2 distt.
1 poor & 1 good
performing distt. in
each month

**Joint, Deputy
Commissioner &
Additional D.C.**
Regular Monitoring in 2
district in each month

**2-Project Manager &
Quality Monitor**
Regular Monitoring in 2
district in each month

Action Protocol (Contingency Plan)



Action Protocol (Contingency Plan)



Actions taken due to protocol

- FIR registered : 75
- SHG terminated : 201
- Departmental actions
against : 136 Officers
- Financial & Food
grain recovery from : 74 SHGs

New Initiatives

- In Vidisha district, Milk (milk powder) is being provided to targeted students from 1st August for four months as a pilot. It is also proposed to provide soya milk as a pilot in Bhopal District.



Continue....(2)

- @ 200 Cooking Gas connection per district 10,200 gas connections have been given to all districts. Recently, 300 more gas connections per districts have been sanctioned.



Continue....(3)

- Dining Hall have been constructed in some of the districts of Madhya Pradesh out of fund like BRGF and Finance Commission.



Continue....(4)

- Under Panchya Parmeshwar Scheme hand wash units have been constructed in various schools it is being stressed from the state level that most of the schools should construct these units soon under out of fund of other appropriate funds also.



- Mother roster has been prepared at school level for tasting of meals by mother.
- School Teachers also taste it under a system of rotation before it is served to students.



Continue....(6)

- Mid Day Meal Sample is kept for 24 hrs in a sealed tiffin in every school.



District : Hoshangabad and Khargone

Continue....(7)

- Agmark Brand Species Oil, etc to be used only in MDM.



District : Khargone

Continue....(8)

- Month September-14, MDM was celebrated as the Abhilekh Sandharan and for the Verification of SHG's records.
- Cooking Cost is directly credited into the account of implementing agencies like SHG'S, SMC'S.
- Honorarium of Cooks-Cum -Helper is also credited into their bank accounts directly.
- Mid Day meal is randomly checked and tasted by Antyodaya Card holders (ACH) Citizens.

Some More Photos

District : Neemuch



District : Gwalior



District : Gwalior



District : Vidisha



District : Sehore



THANK YOU Very much



मध्याह्न भोजन योजना
Mid Day Meal Scheme



DEWAS