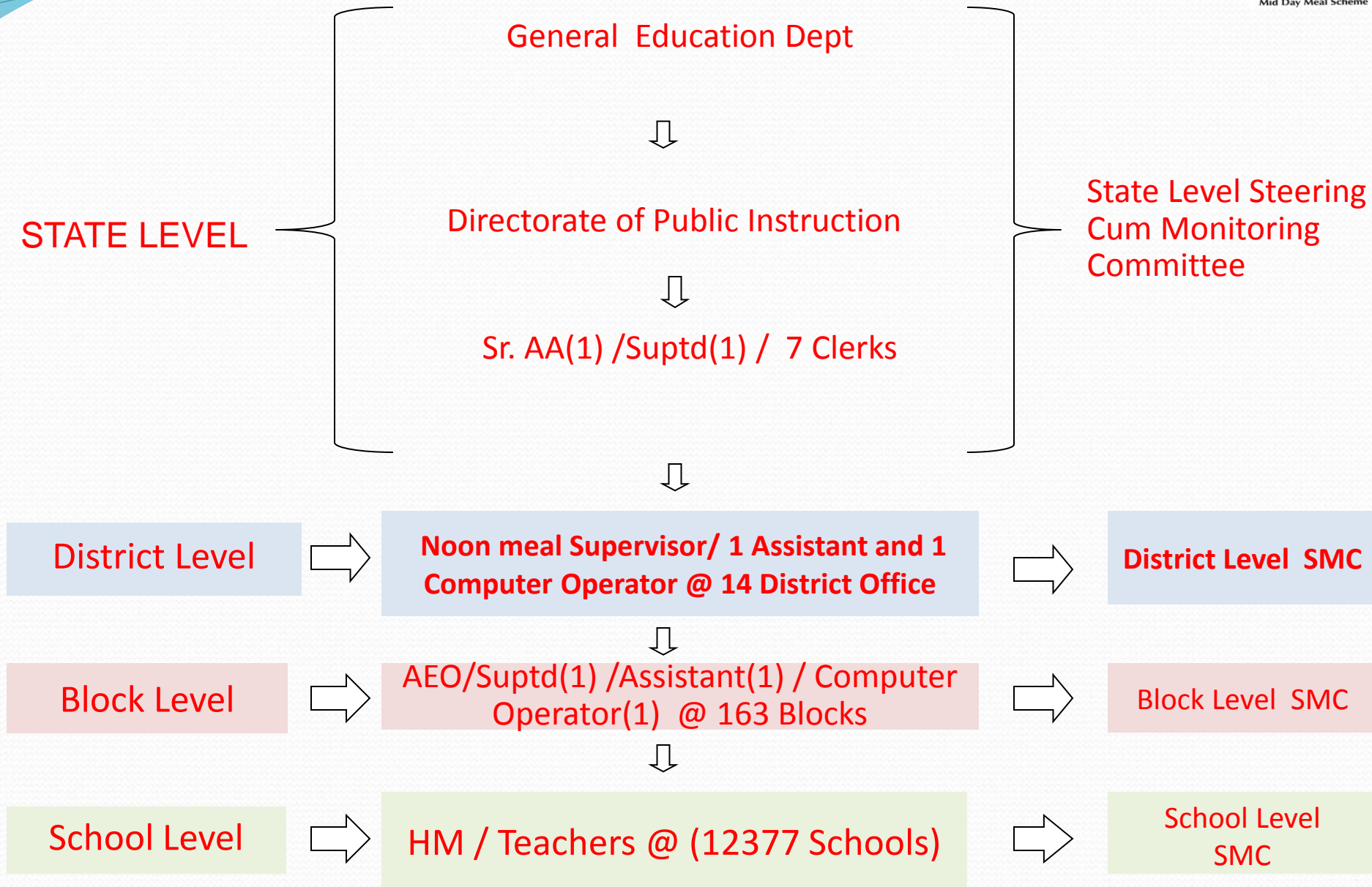




Directorate of Public Instruction,
Govt. Of Kerala.
MID DAY MEAL



MANAGEMENT STRUCTURE



FOOD GRAIN FLOW CHART



FCI



**KERALA CIVIL SUPPLIES
CORPORATION**



MAVELI STORES

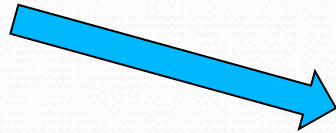


SCHOOLS

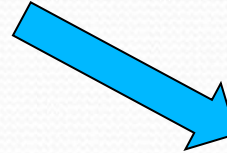
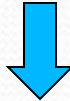
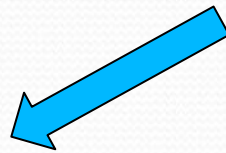


FUND FLOW

GOI + STATE



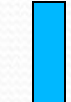
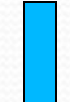
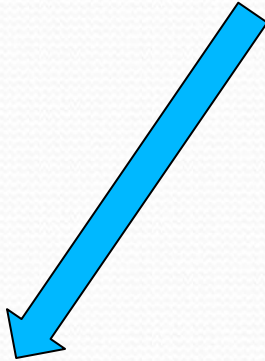
DPI



HM

DDE

KCSC



FCI

(Cost of Transportation)

(Veg & Condiments,
Fuel & transport
Rem. To cooks,
Egg and Milk)

(Cost of Food
grains)

Beneficiaries for 2015-16

(As on 30/09/2015)



Std	Total Enrollment	Total Beneficiaries	Coverage %
I-V	15,95,482	15,31,140	95.97
VI-VIII	11,06,429	9,71,090	87.77
Total	27,01,911	25,02,230	92.61

Food Grains Allocation, Lifting & Distribution



(Up to 30-09-2015 Qty in MT)

Level	Allocation by GOI	Lifted by KSCC from FCI	Previous Balance at KCSC and Schools level	Total Food Grain at KCSC and Schools level	Used by Schools	Balance After Septempet , 2014
LP	29216.74	12490.20	1243.26	13733.46	11714.90	2018.56
UP	27981.48	13864.50	4886.53	18751.03	11182.66	7568.37
Total	57198.22	26354.70	6129.79	32484.49	22897.56	9586.93

Budget Provision 2015-16 (up to 30/09/2015)



(Rs. In Lakhs)

Component	Fund releases		Expenditure
	Central Share	State** Share	
Cost of Foodgrain	1939.02	0.00	1489.04
Cooking Cost	8929.21	3418.33	9585.00
Honorarium to Cook-cum-helper	242.61	4021.01	3945.51
Transportation Cost	257.39	368.97	566.63
MME	82.28	0.00	35.12
TOTAL	11450.51	7808.31	15621.30

** State Budget Provision (Including Central Share) is Rs.63167.00 lakhs

Major Steps taken by State Govt.



- ❖ **Payment to Cooks @ Rs.350 per Day(14,003 Cooks)**
- ❖ **Sanctioned Festival Allowance to Cooks @ Rs 1,010.**
- ❖ **5 Kg Rice distributed to all beneficiaries free of cost from state fund during Onam Season.**
- ❖ **District Corporation/Dist. Panchayaths/PTAs are giving breakfast with its own funds.**
- ❖ **Rs. 1,400 /- is given as Transportation Assistance per MT in addition to Central Share.**
- ❖ **Cooking Cost and Honorarium to Cooks are e-transferred directly from Directorate to School's Bank Accounts in advance**

Supply of Breakfast









मध्याह्न भोजन योजना
Mid Day Meal Scheme

Thank You